



31st Sale

Spring 2020 Bull & Female Sale

Saturday - April 11 - 2020

12:00pm cst - Randolph - Kansas



Cover photo: Sand Scrub LLC, Rob Johnson family, Ft. Pierce, Florida, Fink Customer since 2012
(Note the tree in the background with a large Bald Eagle nest, lined with Spanish moss)

Fink Beef Genetics Pre-Sale Social & Casino Night

Friday Evening, April 10, 2020

Fink Beef Genetics Sale Facility

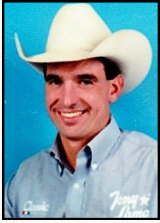


Food, refreshments and an all-out good time as you visit with friends in the industry, while competing on poker tables, craps table, blackjack!



BEEF GENETICS

Auctioneers



Kyle Elwood
785-493-2901



Ethan Schutte
785-541-1027

31st Sale Spring 2020 Sale 12:00pm CST Saturday, April 11, 2020



Sale Location

Fink Beef Genetics Sale Facility is located:
Approximately 22 miles northwest of Manhattan on Hwy 77.
Approximately 35 miles south of Marysville on Hwy 77.
Approximately 25 miles east of Clay Center on Hwy 24, then north on Hwy 77 approximately 8 miles.

The sale facility is approximately .8 of a mile north of the Randolph Short Stop gas station on Hwy. 77, on west side of the road. If coming from the North, watch for signs after crossing the Fancy Creek bridge, approximately 1/2 mile from our turn.

Livestock Mortality Insurance

Representatives from American Livestock Insurance Company will be at the sale to assist you with mortality insurance for your purchases.

Terms and Conditions

The cattle will sell under the Standard Terms and Conditions as recommended by the American Angus Association and the International Charolais Association, however the Fink guarantee is the best in the Nation and stands behind the bulls with guarantee outlined in this catalog.

Inspection of Cattle

Bulls may be seen at the sale site after 3 p.m., Friday, April 10th, as we will be transporting the bulls to the sale location until 3:00. To view before the 10th, contact the Fink Ranch. Please call ahead for viewing if possible.

Liability

All persons who attend this sale do so at their own risk, legal or otherwise, for their safety of the behavior of the animals. The owner, sale management firm, and the sale staff assume no liability for property loss or accident that may occur.

If the weather is bad, contact us for further information, and watch our FaceBook page for updates.

**View bulls online at
dvauction.com or
finkbeefgenetics.com
after March 25, 2020.**

Special Guests

John McCurry, President, Kansas Angus Association
Spencer Schrader, President, Kansas Charolais Association

Livestock Journalists

Guy Peverley, *Stock Exchange*..... 785-456-9911
Stephen Russell, *Kansas Stockman* 785-458-2650
Bill Bowman 816-752-0079
Kristian Rennert 308-440-9463

Transportation

Manhattan, Kansas, is approximately two hours west of Kansas City, Missouri, and is served with commuter flights from Kansas City International. Rental cars are available at the Manhattan Airport. Travelers Express Shuttle Service is available from Kansas City to Manhattan. Reservations can be made by calling 785-539-2284. Galen and Lori Fink will gladly meet planes on request at the Manhattan Airport and provide transportation to and from the sale site, which is approximately 20 miles from the airport.

Accommodations

Hilton Garden Inn—Manhattan 785-532-9116
Best Western—Manhattan 785-537-8300
Clarion Hotel—Manhattan 785-539-5311
Comfort Inn—Manhattan 785-770-8000
Fairfield Inn—Manhattan 785-539-2400
Hampton Inn—Manhattan 785-539-5000
Super 8—Manhattan 785-537-8468
Cedar Court—Clay Center 785-632-2148
Best Western—Marysville 785-562-2354
Super 8—Marysville 785-562-5588

Pre-Sale Get Together and Appreciation

Friday evening, April 10th, at the sale headquarters. Please join us for social, food, visits with industry representatives, and gambling.

Breakfast

Rolls, donuts, coffee and juice will be available the morning of the sale.

Lunch

Lunch will be available at the bull sale, compliments of Finks and served by **Little Apple Brewery**, Manhattan, Kansas.

Sale Day Phones

Sale Facility785-293-5176
Galen Fink785-532-9936
Lori Fink.....785-532-8171
Megan Larson785-410-5559
Chad Larson620-242-3528
Gene Barrett.....785-224-8509
Anna Barrett.....785-224-8536
Barrett Broadie.....620-635-6128



The Balanced Program

Galen: 785-532-9936 Lori: 785-532-8171 Megan: 785-410-5559
finkbull1@twinvalley.net finkbeefgenetics.com

15523 Tuttle Creek Blvd., Randolph, KS 66554

Dear Producers,

Thank you for taking the time to review our Spring 2020 Bull and Female sale catalog. We do appreciate everyone's support and interest for over 38 years. If we don't keep you in business, we won't be in business!

Balance is still the focus of our program—really our goals haven't changed in all of these 38 years—we just try to produce functional, profitable, realist genetics for you.

We have got to see many fads, and chases for extremes in that timeframe. We are known for middle-of-the-road cattle—ones that profit in the most areas, allowing more profit in more areas for our customers.

Our Spring sale will permanently be the 2nd Saturday of April from now on. Two main reasons are customer-focused:

1. Bulls closer to turnout-time saving feed and headaches for customers.
2. Allows customers to semen-check their current bulls later (early April) to know their bull needs prior to the breeding season.

Thank you for any potential interest in our program and please call us with questions or for more information.

Thank you,

Galen

(p.s. Actual scrotals available sale day.)



Galen & Lori Fink and Chad & Megan Larson



Front: Colt & Barrett Broadie, Jake & Carson Sowders
Back: Raegan (Broadie) Sowders, Austin & Lori Broadie
Barrett's cell 620-635-6128



Gene, Anna, Payden & Ella Barrett
Gene's cell 785-224-8509



BEEF GENETICS
FOR OVER 38 YEARS!

Guarantees

Announcing the first 3-year guarantee...A Fink Industry First!

- All bulls have been evaluated for structural soundness, fertility, and disposition.
- Starting fall 2010, the following policy has been in place.

1st Year Guarantee—Single Bull Pasture

Full coverage for 12 months from date of purchase:

- Broken penis in single-sire pasture
- Structural problems due to feet, swollen hocks

50% coverage purchase prices—Multi-sire groups of bulls

- Broken penis
- Stifle
- Broken legs
- Lightning
- Disposition

+Exception: Foot rot; nails in hooves; penile cuts due to wire, corn stalk leaves, etc.; illness; diseases; freeze damage; testicle injury, etc.

+Any reproductive injuries must be examined by a veterinarian within 48 hours of injury. Quick treatment can cure many problems. Injuries not checked and treated promptly will not qualify for 50% coverage. A letter from your vet will be requested.

+We do not guarantee bulls to freeze semen.

3-Year Guarantee

- Any bull sold by Finks that proves to be structurally unsound, infertile, due to foot shape, swollen hocks or failure to pass a complete BSE exam is guaranteed for 36 months from date of sale.
- That guarantee will apply providing the bull's incapacity is not caused **by injury, disease, or founder** since leaving Finks. The value remaining is calculated on the basis that the guarantee is reduced by one-third of the purchase for each year of service.
- A veterinarian certificate **must** be supplied by the purchaser. Fink reserves the right to have bull semen tested by two different veterinarian clinics, if requested.

It is important to understand that normal care must be taken and good husbandry practices observed, as we cannot fully replace a bull that is injured or dies for any reason. We recommend you insure animals against injury. This includes not putting younger and older bulls together; and having too many bulls in relation to too few cows. Any guarantees will be covered by satisfactory bull replacement, if available, or credit on future bull purchases for the amount covered.

Remember, at Finks, you keep any salvage value! Always have!

Fink Customer Marketing

For many years, we have helped customers market their cattle and we take this job very serious. As time has progressed, we have also progressed in our methods, reaching more potential buyers and contacts than ever before. In 1995, we developed calf sales; 1996, females Genetic Credit, Alliance and feedlot partnerships. We have given numerous speeches, and have had articles written about our innovative approach to customer marketing.

2010 to Present

- Developed a system to ensure that when a **customer sells calves, stockers, fats**, we get that information out to over **350 potential buyers**. With our network we make no guarantee to the sellers, but we sure do try hard! Female sales go out to over **1,200 plus!**
- Work closely with local markets, Superior Video, and other internet sales across the United States.
- Genetic credit program (rewards for carcass data)

- Feedlot connections
- Alliances
- USPB: 866-877-2525
- Angus & Charolais GeneNet, Ken Conway: 785-628-3004
- Genetic, marketing, consulting service
- Creekstone Farms: Contact Jake at 620-218-0128

2020 Bull Buyer Information

Bulls will sell in sire group order.

Sight Unseen Program

If you can't make it to the sale, we will do our best to represent the bulls to you. **Please call at least 5 days ahead of the sale, if possible, to go over your needs. This gives us time to determine the best possible bulls for your operation and get back with you to discuss them.** You may leave bids with us if desired, we will buy the bulls as cheap as we can, or you may call any of the representatives. **Our program is built on trust and honesty.** All bulls have had **full BSE (breeding soundness exam) by Dr. Don Musil, Prairie Valley Vet Clinic, Blue Rapids, KS. Scrotal measurements are not adjusted, they are actual, taken on March 25-27** and will be available as a supplement sale day.

\$50 off per bull — if bulls are picked up sale day or on Sunday, April 12, or, Monday, April 13, 2020, at the sale site.

Free Delivery — To the **nearest major stockyard** in the continental United States. **Delivery will start Sunday, April 12.** We appreciate your understanding of meeting semi-trucks at a central point or along an interstate.

3% Discount on four bulls or more by one buyer.

Herd Health — At weaning, all bulls received: Resvac 4/ somuback, one shot Ultra 7; Dectomax pour-on, Multimin. All bulls received vibrio and leptos at semen checking, plus Ivo-mec Eprinex. All bulls have been checked negative for BVD.

EPDs for Angus are current as of March 6, 2020.

EPDs for Charolais are current as of March 2, 2020.

Retaining 1/2 semen interest in every bull in this sale. We have retained an interest in every bull since 1994. Because it generally takes several years for a sire to be 'discovered,' we feel we can help our customers through various programs, 'find' and 'market' bulls that float to the top. You will own full possession and 100% salvage value of the bull. We are retaining the right to half the semen sales revenue from the bull if, sometime in the future, semen sales become a possibility. If for some reason you should sell the bull to another breeder, Fink Beef Genetics still retains that 50% semen interest. If you purchase a partnership bull and wish to have semen collected for your own herd use, that semen is 100% yours, unless you contact Fink Beef Genetics and we agree to have him collected in a joint venture. If the bull is collected in a joint venture, we split the semen production costs and the revenue of sales on a 50/50 basis. However, if you are not interested in collecting semen on the bull, Fink Beef Genetics will have the right to collect the bull for their own use and will pay expenses for collection(s). We will have him collected at your convenience.

We have not included any actual information — except scrotal measurements taken March 25—27, 2020. Why? Because of variations due to cooperator herds we feel the EPDs, because of the use of high-proven sires, are still the best information to use. When we are convinced that all the data can be compared accurately, we will print it.

All American Beef Battalion



Our mission is to promote American beef and to support the troops and their families fighting the war on terror.

**P.O. Box 458
Ashland, KS 67831
620-635-0544 or www.steaksfortroops.com**

Thank you to the following individuals

Thank you to Dr. Don Musil, Dr. Madeleine Dionne, Barb Lange, Kaleigh Bloomfield, and Jennifer Martin, Prairie Valley Vet Clinic, Blue Rapids, Kan, for all our health work. They are always on the cutting edge with information and advice.

Thank you to Cross Country Genetics, North, Dr. Kirk Gray, Dr. Clay Briener, Dr. Joel Anderson, and crew. Dr. Gray has done our embryo work since 1988! Special thanks to the crew for keeping it all straight!

2019–2020 Cooperators

Since 1989 we have worked closely with cooperator herds on embryo implantation in expanding our numbers. This includes commercial operations that run Fink females. This has proven to be a workable option for both parties. We believe the beef business is about working together. In some cases the breeders may show other than Fink on the registration certificate, but **rest assured** they are guaranteed with the same genetics, service and conditions. Any problems, should they occur, will be handled by Finks.

**Mike & Kevin Renfro
Joe & Tom Ryan
Doyle Creek Cattle
Larson Farms**

**Blooming Hills Charolais (our niece, Jan Beene)
Steve & Nick Hargrave
Robert Alyward
Sheppard Charolais Ranch
Jeff & Kristie Schurle
Jerry Luthi
Shannon & Zandrea Ardery
Steve & Brandie Holly
Lisa Stryker
Frank Turner and David Innes
Taylor and Hadley Schotte**



Rose is always ready to go!



IF YOU LOOK AT NOTHING ELSE IN THIS CATALOG, PLEASE LOOK AT THIS:

Let the Cow Save You Money and the Bull Make You Money

By Kris Ringwall

We've reprinted **a portion** of Kris' article, **Let the cow save you money and the bull make you money**, below.

Read Kris' full article and others at:

www.ag.ndsu.edu/dickinsonrec/beeftalk-articles-1

... Second, recognize the importance of monitoring cow size. **The maintenance of excessively large cows has proven difficult to offset with increased weaning weights.** The center has targeted mature cow size at 1,100 to 1,300 pounds. Although individual calf weights will be lighter, total **calf weight based on calves produced per acre will be greater, resulting in more total pounds of calf.**

Third, recognize the importance of good bull selection using technological advancements that improve accuracy. Generally, keep expected progeny differences (EPDs) above the **50th percentile within the desired traits and breed. As matter of practicality, become comfortable with bulls that are above the 50th percentile but may not exceed the upper 30th percentile for commercial production.**

Fourth, recognize the value of breeding systems, maximizing the traits of interest in the **terminal sire program while balancing appropriate traits on the maternal side. Let the cow save you money and the bull make you money.**

**BULLS AND FEMALES CAN BE VIEWED ONLINE AT
finkbeefgenetics.com or dvauction.com
after March 25, 2020.**

"You've never seen a fat athlete, have you?"

A Discussion of Ultrasound Data: Backfat – Marbling – Ribeye

We hesitate to print this data every year because we know it gets compared between other purebred breeders' sales and even within our own contemporary groups. The best advice is **use the EPDs first, then actual data provided second.**

Why are Fink bulls different so that this data isn't comparable to others?

- Fink bulls are among, if not the leanest bulls, that sell in the U.S. We do this to ensure soundness and fertility for you by not fattening the bulls.
- Feeding can make impressive IMF and yearling weights, but EPDs are still the most reliable!
- Bottomline... We try to develop bulls that cover all the bases. We just bypass fat-filled scrotals, and keep our bulls as sound and fertile as possible. Customers' carcass data for over 30 years indicate that Fink-bred cattle will compete with anyone's. We take great pride in selling bulls that should last several years.

**To borrow from the late cattleman, Andy Olson,
"You have never seen a fat athlete, have you?"**

Fink Fall-Born Bulls

Fink bulls ran on native pasture with grass hay and some supplementation for approximately 90 days this winter. They were all semen checked last fall in September/October and passed. These are NOT slow-maturing sexual bulls held over. Semen check at approximately 12 to 14 months of age, assures buyer's we are protecting fertility on the male side also. We will recheck fertility again on March 27. Updates will be posted at: finkbeefgenetics.com

Barrett Fall-Born Bulls

Barrett bulls were developed on bromegrass pasture from weaning through December. From December to sale date, they have been on a ration of free-choice brome hay and a supplementation of rolled corn/protein blend with access to pasture. The bulls received and passed a complete BSE the first week of October. To ensure they are still ready, they will be evaluated again March 25. Updates will be posted at: barrettcattle.com.



We DNA both the Angus and Charolais bulls. The results will be reflected in both breeds' EPDs. DNA is like any

other tool—just keep everything in perspective on how you use it. We are trying it to, hopefully, present to you with the most current data to level environmental differences. Because of our large embryo program, cooperator herds, etc., environment can play a large role in actual weaning and yearling weights.

As always, please contact us with questions.

Angus Bulls' EPDs have been genomically enhanced using Neogen GeneSeek through Angus Genetics, Inc.

Rick Pfortmiller, 785.230.9507, rpfortmiller@neogen.com



Never Miss An Auction Again!
Watch & Bid online for FREE!

Visit www.DVAuction.com and Register Today!

For General Questions Please Contact Our Office:
(402) 316-5460 or support@dvauction.com

Videos of sale bulls and females available after March 25
finkbeefgenetics.com or DVAuction.com

REFERENCE SIRES

S A V RESOURCE 1441

Calved: 1/7/11 Reg#: 17016597
RR Rito 707

Rito 707 of ideal 3407 7075
Ideal 3407 of 1418 076

SAV 8180 Traveler 004
SAV Blackcap May 4136
SAV May 2397

Tattoo: 1441
Rito N Bar
Eriskay of Rollin Rock 3
Ideal 1418 of 8103 4286
Ideal 076 of 692 8375
Sitz Traveler 8180
Boyd Forever Lady 8003
SAF 598 Bando 5175
SAV May 7238

One of the most dependable bulls to add muscle, moderate-framed, growth, ribeye in the breed. One of Genex's all-time high-selling semen sires. Brought back into production because of the demand for semen. Excellent heifer pregnancy rate. Top 10% CW in the breed.



Production											Maternal						
CED	BW	WW	YW	RADG	DMI	YH	SC	Doc	Claw	Angle	HP	CEM	Milk	MkH	MW	MH	\$EN
Acc %	Acc %	Acc %	Acc %	Acc %	Acc %	Acc %	Acc %	Acc %	Acc %	Acc %	Acc %	Acc %	Acc %	MkD	Acc %	Acc %	%
Prog	Prog	Prog	Prog	Prog	Prog	Prog	Prog	Prog	Prog	Prog	Daus	Daus	%	Prog	Prog	Prog	%
+1	+4.0	+70	+133	+25	+2.24	-.1	+1.18	+22	+37	+44	+13.3	-1	+18	640	+86	-.2	-27
.84	.98	.97	.96	.72	.72	.94	.96	.94	.81	.81	.80	.91	.92	2893	.78	.80	90%
85%	95%	15%	10%	35%	95%	95%	25%	25%	4%	20%	95%	90%			10%	90%	90%
168	15456	14726	7719	77	77	1294	3428	1786	336	336	436	2365		163	163		
Carcass											\$Values						
CW	Marb	RE	Fat	Carc Grp	Usnd Grp	\$M	\$W	\$F	\$G	\$B							
Acc %	Acc %	Acc %	Acc %	Prog	Prog	%	%	%	%	%							
+58	-.05	+1.10	+0.06	10	1847	+52	+58	+82	+27	+109							
.71	.68	.69	.69	30	6134												
10%	95%	2%	45%			55%	45%	55%	90%	75%							

REFERENCE SIREs

BARRETT SUPERDUTY 4855

Calved: 8/21/14 Reg#: 18175357 Tattoo: 4855
 Rito 707 of Ideal 3407 7075 R R Rito 707
 S A V Resource Ideal 3407 of 1418 076
 S A V Blackcap May 4136 S A V 8180 Traveler 004
 S A V May 2397
 B A R EXT Traveler 205 N Bar Emulation EXT
 Barretts Miss 4004 2526 BAR B A R Queen Traveler 3015
 Finks Miss 2526 9078 5175 S A F 598 Bando 5175
 DCF 9078 036 4193



Improvement in all areas is slower, but results are more profitable. Super Duty does that! Progeny slick off great! Excellent semen at early age; froze hundreds of units of sexed. Cow family is as strong as any for all the important traits.

Production												Maternal					
CED Acc % Prog	BW Acc % Prog	WW Acc % Prog	YW Acc % Prog	RADG Acc % Prog	DMI Acc % Prog	YH Acc % Prog	SC Acc % Prog	Doc Acc % Prog	Claw Acc % Prog	Angle Acc % Prog	HP Acc % Daus	CEM Acc % Daus	Milk Acc %	MkH MKD	MW Acc % Prog	MH Acc % Prog	\$EN %
+0	+3.8	+58	+107	+22	+1.28	-.2	+1.36	+16	+34	+58	+10.5	+7	+26	1	+47	-.1	-13
.42	.72	.68	.56	.40	.40	.51	.57	.46	.32	.32	.35	.41	.40	5	.44	.46	
90%	95%	40%	35%	60%	85%	95%	15%	50%	2%	90%	55%	65%	40%		55%	80%	55%
64		69	29				16	6			6	8					

Carcass						\$Values				
CW Acc %	Marb Acc %	RE Acc %	Fat Acc %	Carc Grp Prog	Usnd Grp Prog	\$M %	\$W %	\$F %	\$G %	\$B %
+46	+06	+91	-.023		1	+56	+54	+81	+33	+114
.49	.41	.41	.38		3					
35%	95%	10%	10%			40%	55%	55%	75%	70%

BARRETT OVERDRIVE 4856

Calved: 8/27/14 Reg#: 18175358 Tattoo: 4856
 Rito 707 of Ideal 3407 7075 R R Rito 707
 S A V Resource Ideal 3407 of 1418 076
 S A V Blackcap May 4136 S A V 8180 Traveler 004
 S A V May 2397
 B A R EXT Traveler 205 N Bar Emulation EXT
 Barretts Miss 4004 2526 BAR B A R Queen Traveler 3015
 Finks Miss 2526 9078 5175 S A F 598 Bando 5175
 DCF 9078 036 4193



Unique bull to add power, eye appeal, docility; plus ability to make outstanding females. Slick-haired and great for Southern climates, recommended for Florida customers regardless of BW EPD. Middle-of-the-road for most traits, no wrecks! Balanced genetics for years.

Production												Maternal					
CED Acc % Prog	BW Acc % Prog	WW Acc % Prog	YW Acc % Prog	RADG Acc % Prog	DMI Acc % Prog	YH Acc % Prog	SC Acc % Prog	Doc Acc % Prog	Claw Acc % Prog	Angle Acc % Prog	HP Acc % Daus	CEM Acc % Daus	Milk Acc %	MkH MKD	MW Acc % Prog	MH Acc % Prog	\$EN %
+3	+3.2	+62	+112	+23	+1.12	+3	+1.27	+27	+35	+47	+8.7	+1	+29	3	+66	+0	-23
.45	.82	.78	.69	.41	.41	.52	.70	.60	.33	.33	.39	.51	.45	24	.45	.46	
75%	90%	30%	25%	50%	80%	65%	20%	10%	3%	30%	75%	95%	25%		30%	75%	80%
206		194	104				60	29	2	2	15	34					

Carcass						\$Values				
CW Acc %	Marb Acc %	RE Acc %	Fat Acc %	Carc Grp Prog	Usnd Grp Prog	\$M %	\$W %	\$F %	\$G %	\$B %
+45	+24	+92	-.013	2	4	+51	+62	+78	+40	+119
.66	.62	.57	.56	32	17					
35%	80%	10%	20%			55%	35%	60%	60%	65%

SITZ WISDOM 481T

Calved: 2/11/07 Reg#: 15636992 Tattoo: 481T
 Connealy Lead On Connealy Leadtime
 Connealy Onward Eligence Plus of Conanga
 Alitune of Conanga 6104 GAR Traveler 1489
 Avalon 1418 of Conanga 6276
 Sitz New Design 349M Bon View New Design 1407
 Sitz Elluma Elite 94P Sitz Pride 166K
 Sitz Elluma Elite 163M OCC Great Plains 943G
 Sitz Elluma Elite 1698



Fills the word 'balanced' as well as any bull. Look at his accuracy and don't expect any changes. Semen is limited and in very few hands. Good heifer pregnancy. Huge scrotal. Carcass.

Production												Maternal					
CED Acc % Prog	BW Acc % Prog	WW Acc % Prog	YW Acc % Prog	RADG Acc % Prog	DMI Acc % Prog	YH Acc % Prog	SC Acc % Prog	Doc Acc % Prog	Claw Acc % Prog	Angle Acc % Prog	HP Acc % Daus	CEM Acc % Daus	Milk Acc %	MkH MKD	MW Acc % Prog	MH Acc % Prog	\$EN %
+8	+1.7	+54	+111	+30	+1.13	+5	+1.70	+16	+46	+39	+8.9	+7	+24	140	+49	+2	-13
.76	.95	.94	.92	.58	.58	.89	.92	.83	.54	.53	.64	.83	.87	678	.70	.65	
35%	60%	55%	30%	10%	80%	45%	10%	50%	30%	5%	75%	65%	55%		50%	55%	55%
135	2698	2781	1872	19	19	356	900	224	23	23	106	472		62	62	62	

Carcass						\$Values				
CW Acc %	Marb Acc %	RE Acc %	Fat Acc %	Carc Grp Prog	Usnd Grp Prog	\$M %	\$W %	\$F %	\$G %	\$B %
+42	+64	+42	+.025	1	403	+51	+57	+96	+49	+145
.58	.53	.53	.54	1	1648					
40%	30%	65%	70%			55%	50%	25%	40%	30%

REFERENCE SIRES

SINCLAIR EMULATION XXP

Calved: 3/3/06 Reg#: 15355048
 Emulation N Bar 5522
 N Bar Emulation EXT
 N Bar Primrose 2424
 N Bar Emulation EXT
 N Bar Primrose Y3051
 N Bar Primrose 2429

Tattoo: 6X44
 Emulation 31
 Ankony 8F78 Lass 8F275
 Emulation 31
 Primrose N Bar 9962
 Emulation N Bar 5522
 N Bar Primrose 2424
 Nichols Trademark S1
 Primrose N Bar 9962



Older, proven, with concentrated genetics on a proven bull. Double-bred EXT with excellent disposition! Has over 800 progeny turned into the Angus Association. Sired a bull at Schaffs that sold for \$600,000+. Balanced EPDs, middle of the road. The kind of bulls that survive way more than 2 years!

Production												Maternal					
CED Acc % Prog	BW Acc % Prog	WW Acc % Prog	YW Acc % Prog	RADG Acc % Prog	DMI Acc % Prog	YH Acc % Prog	SC Acc % Prog	Doc Acc % Prog	Claw Acc % Prog	Angle Acc % Prog	HP Acc % Daus	CEM Acc % Daus	Milk Acc %	MkH MkD	MW Acc % Prog	MH Acc % Prog	\$EN %
+1	+1.5	+57	+106	+22	+1.59	+2	-.02	+21	+65	+61	+12.0	+9	+18	52	+61	+0	-15
.66	.85	.85	.85	.42	.42	.67	.86	.83	.26	.29	.26	.73	.75	242	.56	.56	60%
85%	60%	45%	35%	60%	95%	75%	95%	30%	95%	95%	35%	45%	90%		35%	75%	
59	845	818	544	4	4	25	297	232	8	8	6	200		17	17		

Carcass						\$Values				
CW Acc %	Marb Acc %	RE Acc %	Fat Acc %	Carc Grp Prog	Usnd Grp Prog	\$M %	\$W %	\$F %	\$G %	\$B %
+47	+64	+04	+047	1	135	+41	+48	+83	+42	+125
.54	.48	.49	.49	4	501					
30%	30%	95%	90%			80%	70%	50%	55%	55%

NICHOLS EXTRA K205

Calved: 4/20/00 Reg#: 13752642
 Emulation N Bar 5522
 Nichols Extra H6
 Nichols Eileen May F261
 Nichols Heavy Duty D20
 Nichols Black Heiress F346
 Nichols Black Heiress B3

Tattoo: K205
 Emulation N Bar 5522
 N Bar Primrose 2424
 Nichols Black Ink D220
 Nichols Eileen May B241
 Nichols Heavy Duty X100
 Nichols Heiress A221
 Nichols Formula U193
 Nichols Black Heiress Z28



Older ABS sire that sires slick hair, beautiful udders and high fertility. Why lose 30% of heifers and young cows because of poor fertility? Some genetics will cost you more than 30%!

Production												Maternal					
CED Acc % Prog	BW Acc % Prog	WW Acc % Prog	YW Acc % Prog	RADG Acc % Prog	DMI Acc % Prog	YH Acc % Prog	SC Acc % Prog	Doc Acc % Prog	Claw Acc % Prog	Angle Acc % Prog	HP Acc % Daus	CEM Acc % Daus	Milk Acc %	MkH MkD	MW Acc % Prog	MH Acc % Prog	\$EN %
+6	+1.5	+51	+98	+23	+1.17	+5	+1.23	+15	+47	+62	+12.3	+13	+32	584	+21	-.1	-4
.87	.97	.96	.95	.64	.64	.94	.93	.90	.51	.52	.71	.89	.93	2024	.82	.82	35%
55%	60%	60%	50%	50%	80%	45%	25%	55%	35%	95%	30%	10%	10%		85%	80%	
761	6399	6645	3735	32	32	1336	1198	593	22	22	154	1254		221	221		

Carcass						\$Values				
CW Acc %	Marb Acc %	RE Acc %	Fat Acc %	Carc Grp Prog	Usnd Grp Prog	\$M %	\$W %	\$F %	\$G %	\$B %
+41	+54	+34	+011	30	1128	+64	+71	+79	+45	+124
.79	.77	.73	.77	71	2936					
45%	45%	75%	50%			20%	20%	60%	45%	55%

SVR XXP ENCHANTED 5135

Calved: 4/8/15 Reg#: 18613001
 N Bar Emulation EXT
 Sinclair Emulation XXP
 N Bar Primrose Y3051
 Emulation N Bar 5522
 S C C Enchantress 3F1 X412
 N Bar Enchantress 4908

Tattoo: 5135
 Emulation N Bar 5522
 N Bar Primrose 2424
 N Bar Emulation EXT
 N Bar Primrose 2429
 Emulation 31
 Ankony 8F78 Lass 8F275
 Basin Emulation 5953
 Coffey Enchantress 424



We bought an interest in this bull from Casey Quitmeyer in Nebraska three years ago because of the bull's pedigree. All bulls are out of 1st-calf heifers. Time will tell. He may turn out to be one of the best female sires ever. Longevity is to be expected, not hoped for here!

Production												Maternal					
CED Acc % Prog	BW Acc % Prog	WW Acc % Prog	YW Acc % Prog	RADG Acc % Prog	DMI Acc % Prog	YH Acc % Prog	SC Acc % Prog	Doc Acc % Prog	Claw Acc % Prog	Angle Acc % Prog	HP Acc % Daus	CEM Acc % Daus	Milk Acc %	MkH MkD	MW Acc % Prog	MH Acc % Prog	\$EN %
+5	-.6	+43	+75	+14	+1.08	+2	-.41	+12	+49	+56	+14.6	+10	+16		+24	-.1	++
.28	.45	.53	.35	.22	.22	.32	.29	.20	.08	.09	.18	.22	.25		.27	.26	20%
60%	15%	80%	85%	95%	75%	75%	95%	70%	45%	80%	10%	35%	95%		80%	80%	
5	6	27	2				2				6						

Carcass						\$Values				
CW Acc %	Marb Acc %	RE Acc %	Fat Acc %	Carc Grp Prog	Usnd Grp Prog	\$M %	\$W %	\$F %	\$G %	\$B %
+30	+28	-.08	+087			+54	+38	+52	+19	+71
.28	.20	.24	.18							
75%	75%	95%	95%			50%	85%	95%	95%	95%

REFERENCE SIRES

COLE CREEK CEDAR RIDGE 1V

Calved: 3/5/08 Reg#: 16134394 Tattoo: 1V
 CH Quantum 6247 CH Quantum 3330
 Cole Creek Black Cedar 46P CH Blackbird 0136
 Cole Creek Clova Juanada AAR Windy Ridge 523
 Cole Creek Clova Juanada 8111
 HBR Encore 0544 Shosone Encore 6310
 Cole Creek Clovanada 49S CAR Miss Forever 546
 Cole Creek Clovanada CH Quantum 6247
 Cole Creek Clovada 397



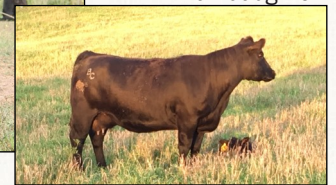
We have decided to start using Cedar Ridge again. He truly will keep cows moderate on frame/weight. Certainly not terminal. Several thousand calves reported from across the U.S. in registered herds. Heifer pregnancy Top 10% of the breed! Minus MW; +8 \$E.

Production												Maternal						
CED Acc % Prog	BW Acc % Prog	WW Acc % Prog	YW Acc % Prog	RADG Acc % Prog	DMI Acc % Prog	YH Acc % Prog	SC Acc % Prog	Doc Acc % Prog	Claw Acc % Prog	Angle Acc % Prog	HP Acc % Daus	CEM Acc % Daus	Milk Acc %	MkH MkD	MW Acc % Prog	MH Acc % Prog	\$EN %	
+10	-6	+40	+72	+17	+51	-4	+83	+13	+44	+58	+13.8	+7	+33	278	-15	-7	+7	
.89	.96	.95	.92	.51	.51	.87	.90	.83	.57	.58	.61	.86	.89	1100	.79	.79		
25%	15%	85%	85%	90%	35%	95%	45%	65%	20%	90%	15%	65%	10%		95%	95%	15%	
1496	3459	3513	1814	9	9	243	559	236	50	50	97	798			172	172		

Carcass						\$Values				
CW Acc %	Marb Acc %	RE Acc %	Fat Acc %	Carc Grp Prog	Usnd Grp Prog	\$M %	\$W %	\$F %	\$G %	\$B %
+6	+49	+11	+030	8	365	+69	+66	+35	+37	+72
.62	.58	.56	.58	14	1019	15%	25%	95%	65%	95%
95%	50%	95%	75%							

BARRETT WALT 384

Calved: 8/26/13 Reg#: 17926615 Tattoo: 384
 Emulation 31 F C R Elation Lad 652
 Emulation N Bar 5522 Miss Emulous 243
 Ankony 8F78 Lass 8F275 Ankony Dynamo 27542
 Ankony B999 Lass 26832
 B A R EXT Traveler 205 N Bar Emulation EXT
 Barretts Miss 4004 2526 BAR B A R Queen Traveler 3015
 Finks Miss 2526 9078 5175 S A F 598 Bando 5175
 DCF 9078 036 4193



Combined the time-tested 5522 with 4004. Excellent structure, with picture-perfect udders. Bred and built for maternal traits, he makes cows with convenience traits. Daughters are feminine, moderate, beautiful Angus cows. We've used Walt on thousands of commercial heifer projects. Feet pictured at barrettcattle.com

Production												Maternal						
CED Acc % Prog	BW Acc % Prog	WW Acc % Prog	YW Acc % Prog	RADG Acc % Prog	DMI Acc % Prog	YH Acc % Prog	SC Acc % Prog	Doc Acc % Prog	Claw Acc % Prog	Angle Acc % Prog	HP Acc % Daus	CEM Acc % Daus	Milk Acc %	MkH MkD	MW Acc % Prog	MH Acc % Prog	\$EN %	
+10	-2.3	+33	+51	+15	-.06	-4	-.55	+8	+42	+53	+10.7	+9	+15	1	-11	-6	+17	
.45	.71	.66	.55	.34	.34	.48	.45	.40	.34	.35	.31	.43	.42	14	.41	.42		
25%	3%	95%	95%	95%	10%	95%	95%	80%	15%	65%	50%	45%	95%		95%	95%	3%	
11	61	60	33				4	4	10	10	4	16						

Carcass						\$Values				
CW Acc %	Marb Acc %	RE Acc %	Fat Acc %	Carc Grp Prog	Usnd Grp Prog	\$M %	\$W %	\$F %	\$G %	\$B %
+6	+56	+27	-.015	2	6	+51	+32	+42	+47	+90
.50	.43	.42	.39			55%	90%	95%	40%	90%
95%	40%	85%	20%							

BARRETT BUD 685 2526 BAR

Calved: 9/2/16 Reg#: 18933723 Tattoo: 685
 N Bar Emulation EXT Emulation N Bar 5522
 B A R EXT Traveler 205 N Bar Primrose 2424
 B A R Queen Traveler 3015 D H D Traveler 6807
 Magic Queen 963
 S A F 598 Bando 5175 Bon View Bando 598
 Finks Miss 2526 9078 5175 S A F Royal Lass 1002
 DCF 9078 036 4193 B/R New Design 036
 Finks Miss 4193 8130 EXT



Barretts Miss 4004 2526 BAR
Full sister to 'Bud'

Based off of the performance we were seeing from our foundation female, 4004, we flushed her dam, 2526, at 13 years of age to make full sibs. This bull is a result. His calves come very easy, are up and going quick, and although our oldest are just 2018s, if history repeats, he will have the same longevity, fertility, exceptional feet and structure as his sister passes on to her progeny. We do not have a picture on this bull yet. Supplemental pictures, including feet at: barrettcattle.com.

Production												Maternal						
CED Acc % Prog	BW Acc % Prog	WW Acc % Prog	YW Acc % Prog	RADG Acc % Prog	DMI Acc % Prog	YH Acc % Prog	SC Acc % Prog	Doc Acc % Prog	Claw Acc % Prog	Angle Acc % Prog	HP Acc % Daus	CEM Acc % Daus	Milk Acc %	MkH MkD	MW Acc % Prog	MH Acc % Prog	\$EN %	
+12	-1.2	+42	+79	+24	+24	+3	+32	+11	+37	+51	+9.9	+5	+27		+29	-1	-5	
.44	.63	.52	.41	.34	.34	.46	.40	.37	.24	.24	.26	.33	.35		.40	.43		
15%	10%	85%	80%	45%	20%	65%	80%	70%	4%	55%	60%	85%	35%		75%	80%	35%	
16	24	12	3					1										

Carcass						\$Values				
CW Acc %	Marb Acc %	RE Acc %	Fat Acc %	Carc Grp Prog	Usnd Grp Prog	\$M %	\$W %	\$F %	\$G %	\$B %
+39	+75	+74	-.024			+48	+49	+87	+64	+151
.43	.38	.38	.34			65%	65%	45%	15%	25%
50%	20%	20%	10%							

FALL 2018 ANGUS

1 FINK 8099 OF 0877 4744

Calved: 8/25/18 Reg#: 19481489 Tattoo: 8099
 SITZ WISDOM 481T
 FINKS 4744 0909 WI
 FINKS PRIDE 0909 0405 205
 CAR EFFICIENT 534
 FINK MISS 0877 5527 EFF
 FINK MISS 5527 7326 BW

CED	BW	WW	YW	DMI	SC	Doc	Milk
7	1.9	64	110	1.45	0.94	26	29
MW	\$EN	CW	Marb	RE	\$M	\$W	\$B
56	-19	52	0.77	0.23	62	72	129

Complete powerhouse! His sire works for Weers Angus in Nebraska. We were so impressed with their calves, we brought semen back into our program. From the 'Miss' family—the best we've ever had. Only one of these bulls in the sale—you might like him.

2 FINK 8198 4213 RCE

Calved: 9/15/18 Reg#: 19450434 Tattoo: 8198
 RITO 707 OF IDEAL 3407 7075
 S A V RESOURCE 1441
 S A V BLACKCAP MAY 4136
 FINK 2091 OF 5557 FA
 FINK MISS 4213 2213 2091
 FINK MISS 2213 5525 BI

CED	BW	WW	YW	DMI	SC	Doc	Milk
12	-0.5	55	109	1.18	1.77	19	28
MW	\$EN	CW	Marb	RE	\$M	\$W	\$B
51	-16	44	0.39	0.74	70	62	130

Typical thick, deep, moderate-framed Resource son. There is a reason that Resource has been one of the most heavily used bulls in the breed the past few years. The customers' calves that we have seen show the same thickness and power.

3 FINK 8339 2269 RCE

Calved: 9/15/18 Reg#: 19450447 Tattoo: 8339
 RITO 707 OF IDEAL 3407 7075
 S A V RESOURCE 1441
 S A V BLACKCAP MAY 4136
 S A V NET WORTH 4200
 FINK MISS 2269 5522 NW
 FINK MISS 5522 7326 878

CED	BW	WW	YW	DMI	SC	Doc	Milk
1	3.8	55	105	1.23	0.67	20	26
MW	\$EN	CW	Marb	RE	\$M	\$W	\$B
47	-13	51	-0.02	0.56	68	50	109

Growth, maternal, breed giants throughout his pedigree. Back to our most powerful cow family, there's no mistake that this bull looks the way he does. Potential here to build a cowherd and a set of great steers also! Not always the case.

4 FINK 8089 OF 7627 RCE

Calved: 8/17/18 Reg#: 19617414 Tattoo: 8089
 RITO 707 OF IDEAL 3407 7075
 S A V RESOURCE 1441
 S A V BLACKCAP MAY 4136
 BON VIEW NEW DESIGN 878
 FINK MISS 7627 5286 878
 FINK MISS 5386 1125 ND

CED	BW	WW	YW	DMI	SC	Doc	Milk
-2	4.6	65	118	1.65	1.76	10	27
MW	\$EN	CW	Marb	RE	\$M	\$W	\$B
59	-19	56	0.05	0.97	56	60	112

Long-bodied, thick, Resource son that has a long history of good females behind him. Customers get paid for pounds and profit, and replacement females — typical bull that can do both.

5 FINK 8020 OF 2254 RCE

Calved: 8/30/18 Reg#: 19481476 Tattoo: 8020
 RITO 707 OF IDEAL 3407 7075
 S A V RESOURCE 1441
 S A V BLACKCAP MAY 4136
 NICHOLS EXTRA K205
 FINK PRIDE 2254 542 K205
 FINKS PRIDE 542 1372 5522

CED	BW	WW	YW	DMI	SC	Doc	Milk
7	1.5	61	115	1.23	1.98	32	25
MW	\$EN	CW	Marb	RE	\$M	\$W	\$B
71	-24	36	0.47	0.56	72	61	113

Cowmaker here also! Dam is backed up by K205 and 5522—two of the most respected bulls EVER in the breed for longevity, fertility, and good feet. We must squeeze profit from all areas—carcass only additions at certain times of the year is a fast rat to chase.

6 FINK 8303 OF 0519 RE

Calved: 8/31/18 Reg#: 19626761 Tattoo: 8303
 RITO 707 OF IDEAL 3407 7075
 S A V RESOURCE 1441
 S A V BLACKCAP MAY 4136
 SITZ DASH 10277
 FINK MISS 0517 0310 DA
 FINK MISS 0310 0008 4097

CED	BW	WW	YW	DMI	SC	Doc	Milk
5	2.7	61	99	0.81	0.94	17	25
MW	\$EN	CW	Marb	RE	\$M	\$W	\$B
53	-15	47	0.3	1.04	65	63	125

Should be an excellent bull to make replacements. Dash and Windy 4097 are two bulls that hold milk EPDs in check. It's not a surprise that high-milk bulls' daughters raise the cost of production.

7 FINK 8070 OF 5059 RCE

Calved: 9/6/18 Reg#: 19628017 Tattoo: 8070
 RITO 707 OF IDEAL 3407 7075
 S A V RESOURCE 1441
 S A V BLACKCAP MAY 4136
 CONNEALY PACKER 547
 FINK MISS 5059 0871 547
 FINK MISS 0871 6640 K205

CED	BW	WW	YW	DMI	SC	Doc	Milk
7	0.5	40	91	1.07	1.47	19	30
MW	\$EN	CW	Marb	RE	\$M	\$W	\$B
42	-13	45	0.52	0.46	48	43	133

We are impressed with this bull's depth and thickness. Loaded with cow-making genetics—back to K205 and Alliance 6595. Moderate-framed cowmaker. We don't run into too many folks wanting to increase their cow size.

8 FINK 8275 4617 RCE

Calved: 8/15/18 Reg#: 19641665 Tattoo: 8275
 RITO 707 OF IDEAL 3407 7075
 S A V RESOURCE 1441
 S A V BLACKCAP MAY 4136
 S A V FINAL ANSWER 0035
 FINK FRVRLADY 4617 6313 FA
 SUNSET VALLEY FRVRLADY 6313

CED	BW	WW	YW	DMI	SC	Doc	Milk
11	1.9	62	113	1.58	0.72	9	25
MW	\$EN	CW	Marb	RE	\$M	\$W	\$B
75	-25	44	0.12	0.64	51	61	97

Maternal brother to our high-selling Angus bull in the fall 2019 sale to Billy Estrada in Mexico. Actually closer related, as Billy's was sired by Super Duty, a Resource son, raised by Barretts. Udders on the dam's side are perfect! Dam is a donor for Turners in Alabama.

FALL 2018 ANGUS

9 FINK 8087 OF 9432 RCE

Calved: 8/24/18 Reg#: 19628957 Tattoo: 8087
 RITO 707 OF IDEAL 3407 7075
 S A V RESOURCE 1441
 S A V BLACKCAP MAY 4136
 MISSION CONTROL
 FINK PRIDE 9432 541 MC
 FINKS PRIDE 541 1372 5522

CED	BW	WW	YW	DMI	SC	Doc	Milk
3	2.4	51	97	1.26	0.6	14	21
MW	\$EN	CW	Marb	RE	\$M	\$W	\$B
44	-8	39	0.27	0.7	58	41	108

Beautiful females behind this bull. Older genetics add solidity to pedigrees. 5522, Right Time, etc., are known for longevity and stay-ability. Keeping cows in production is one of the most important traits you can have. We missed getting DNA on this bull.



At left, Bill Broadie, All-American Beef Battalion Founder, along with Megan, and Cory Osborn, hypnotist, at the Blue Valley FFA Fundraiser, held to benefit the All-American Beef Battalion.

12 FINK 8286F 5395 SD

Calved: 8/20/18 Reg#: 19625000 Tattoo: 8286F
 S A V RESOURCE 1441
 BARRETT SUPER DUTY 4855
 BARRETTS MISS 4004 2526 BAR
 WULFS EXT 6106
 FINK BONNIE 5395 X023 6106
 CLAYLICK RUN BONNIE X023

CED	BW	WW	YW	DMI	SC	Doc	Milk
7	1.8	60	106	1.28	0.51	6	24
MW	\$EN	CW	Marb	RE	\$M	\$W	\$B
40	-8	43	0.32	0.54	66	63	116

The dam of this bull was selected by Clint Woodrow for an addition to the Badger Creek herd. She would be one of the nicest 6106 daughters anywhere. Moderate-framed, cow-making bull here. Plenty of carcass without giving up the daughters for your cowherd.

13 FINK 8040 OF 3368 SD

Calved: 8/30/18 Reg#: 19481487 Tattoo: 8040
 S A V RESOURCE 1441
 BARRETT SUPER DUTY 4855
 BARRETTS MISS 4004 2526 BAR
 N BAR EMULATION EXT
 FINK MISS 3368 5527 EXT
 FINK MISS 5527 7326 BW

CED	BW	WW	YW	DMI	SC	Doc	Milk
3	3.6	51	90	0.98	0.73	5	30
MW	\$EN	CW	Marb	RE	\$M	\$W	\$B
26	-5	47	0.08	0.35	61	54	104

Promises are easy in this pedigree! Udder quality, moderate-framed, depth, and thickness. Nice, solid bull with about the right growth to maintain mature cow size.

10 FINK 8034 4574 SD

Calved: 9/6/18 Reg#: 19639593 Tattoo: 8034
 S A V RESOURCE 1441
 BARRETT SUPER DUTY 4855
 BARRETTS MISS 4004 2526 BAR
 S A V FINAL ANSWER 0035
 FINK DONNA 4574 0765 FA
 FINK DONNA 0765 9140 5522

CED	BW	WW	YW	DMI	SC	Doc	Milk
-3	4.3	74	128	1.33	1.52	11	27
MW	\$EN	CW	Marb	RE	\$M	\$W	\$B
63	-21	54	0.43	0.49	55	72	132

Full brothers: 8034 and 8038.

14 FINK 8292 5408 SD

Calved: 10/3/18 Reg#: 19617343 Tattoo: 8292
 S A V RESOURCE 1441
 BARRETT SUPER DUTY 4855
 BARRETTS MISS 4004 2526 BAR
 GARDENS WAVE
 FINK DONNA 5408 2235 WAVE
 FINK DONNA 2235 8285 FA

CED	BW	WW	YW	DMI	SC	Doc	Milk
-1	3.9	57	99	0.67	0.89	25	25
MW	\$EN	CW	Marb	RE	\$M	\$W	\$B
15	3	48	0.43	0.92	70	57	142

Younger bull—but look how he is made! Expect fantastic udders, longevity, stability, and controlled mature cow weight and less cost associated with that! Moderate females in this pedigree. Plenty of carcass also.

11 FINK 8038 4574 SD

Calved: 8/29/18 Reg#: 19639594 Tattoo: 8038
 S A V RESOURCE 1441
 BARRETT SUPER DUTY 4855
 BARRETTS MISS 4004 2526 BAR
 S A V FINAL ANSWER 0035
 FINK DONNA 4574 0765 FA
 FINK DONNA 0765 9140 5522

CED	BW	WW	YW	DMI	SC	Doc	Milk
-8	4.1	69	117	0.95	1.34	15	23
MW	\$EN	CW	Marb	RE	\$M	\$W	\$B
81	-27	48	-0.03	0.56	36	61	108

Two powerful full brothers in all areas of production here. Super Duty is doing a great job of moderating cow size, improving udders and longevity. These two bulls are ET that came in lighter off their recipient dams. You be the judge on if they have caught up.

15 BARRETT 8716 206 SD

Calved: 9/17/18 Reg#: 19593626 Tattoo: 8716
 S A V RESOURCE 1441
 BARRETT SUPER DUTY 4855
 BARRETTS MISS 4004 2526 BAR
 L T 598 BANDO 9074
 BARRETT BELLE 206 032 9074
 BARRETTS BELLE 032 1606 GN

CED	BW	WW	YW	DMI	SC	Doc	Milk
3	2.2	54	97	0.56	1.03	18	24
MW	\$EN	CW	Marb	RE	\$M	\$W	\$B
44	-10	38	0.26	0.71	67	53	119

Super Duty has worked very well on our 9074 daughters—adds length and muscle. This bull's dam has a calving interval of 6 @ 364. And, her grandam, 1606, this bull's great-grandam, is still producing for us with a great udder and exceptional feet at 13 years.

FALL 2018 ANGUS

16 BARRETT 8717 253 SD

Calved: 8/26/18 Reg#: 19589102 Tattoo: 8717
 S A V RESOURCE 1441
 BARRETT SUPER DUTY 4855
 BARRETTS MISS 4004 2526 BAR
 S A V Net Worth 4200
 BARRETT PRIDE 253 1406 NW
 BARRETTS PRIDE 1406 210 423

CED	BW	WW	YW	DMI	SC	Doc	Milk
0	4.8	54	101	0.76	0.78	6	22
MW	\$EN	CW	Marb	RE	\$M	\$W	\$B
56	-15	44	0.37	0.66	45	39	137

Very complete, nice, balanced Super Duty. You can expect beautiful females from the Super Duty x Net Worth cross.

20 FINK 8157 2229 OD

Calved: 8/20/18 Reg#: 19639598 Tattoo: 8157
 S A V RESOURCE 1441
 BARRETT OVERDRIVE 4856
 BARRETTS MISS 4004 2526 BAR
 S A V FINAL ANSWER 0035
 FINK ERICA 2229 0847 FA
 FINK ERICA 0847 8278 NPV

CED	BW	WW	YW	DMI	SC	Doc	Milk
10	-1.4	48	82	0.71	0.98	21	23
MW	\$EN	CW	Marb	RE	\$M	\$W	\$B
19	2	25	0.76	0.35	57	56	109



Nice-boned bull for heifers—but able to deliver much more than many 'heifer' bulls. Beautiful udders on the bottom side of this bull's pedigree. Super balanced EPDs in many areas.

17 BARRETT 8402 219 SD

Calved: 9/1/18 Reg#: 19417128 Tattoo: 8402
 S A V RESOURCE 1441
 BARRETT SUPER DUTY 4855
 BARRETTS MISS 4004 2526 BAR
 L T 598 BANDO 9074
 BARRETT MISS 219 4906 N74
 BARRETTS MISS 4906 4202 878

CED	BW	WW	YW	DMI	SC	Doc	Milk
8	0.8	43	79	0.47	1.05	24	36
MW	\$EN	CW	Marb	RE	\$M	\$W	\$B
3	3	21	0.16	0.2	82	61	75

Another one of our Super Duty x 9074 cross that we like so well. 8402 ranks in the top 2% in the Angus breed for \$M.

21 FINK 8138 5019 OD

Calved: 9/25/18 Reg#: 19639596 Tattoo: 8138
 S A V RESOURCE 1441
 BARRETT OVERDRIVE 4856
 BARRETTS MISS 4004 2526 BAR
 GDAR HEISMAN 1705
 FINK MISS 5019 3482 HM
 FINK MISS 3482 8521 141

CED	BW	WW	YW	DMI	SC	Doc	Milk
3	1.7	35	65	0.41	0.96	21	23
MW	\$EN	CW	Marb	RE	\$M	\$W	\$B
-3	12	12	0.35	0.69	64	36	83



This moderate-framed, deep, soggy bull comes from several generations of beautiful-uddered females. He is a younger bull that wasn't old enough to make last fall's sale.

18 FINK 8158 5362 OD

Calved: 8/27/18 Reg#: 19639599 Tattoo: 8158
 S A V RESOURCE 1441
 BARRETT OVERDRIVE 4856
 BARRETTS MISS 4004 2526 BAR
 S A V FINAL ANSWER 0035
 FINK MISS 5362 5521 FA
 FINK MISS 5521 7326 878

CED	BW	WW	YW	DMI	SC	Doc	Milk
8	1.1	60	106	0.81	1.25	25	34
MW	\$EN	CW	Marb	RE	\$M	\$W	\$B
64	-25	41	0.18	0.63	52	72	113

Balance in a package that's easy to look at! Bulls like this one out of cow families that never miss is what the cow business is about—note I said cow business—not one-trait selection for marbling. About right in many areas.

22 BARRETT 8715 157 OD

Calved: 9/2/18 Reg#: 19589101 Tattoo: 8715
 S A V RESOURCE 1441
 BARRETT OVERDRIVE 4856
 BARRETTS MISS 4004 2526 BAR
 GARRET'S NATIONWIDE 8001
 BARRETT RITA 157 OF 1709 GN
 BARRETTS 1709 OF 1204 5522

CED	BW	WW	YW	DMI	SC	Doc	Milk
11	1.9	66	112	1.21	1.1	13	20
MW	\$EN	CW	Marb	RE	\$M	\$W	\$B
89	-29	38	0.39	0.82	43	60	114

We sure like this bull, the way he is made and his genetics. Certainly longevity in his line with his grandam, one of our foundation females, 1709, producing up to 15 years of age. His dam, 157, has a CE of 7 at 364. We continue to use Overdrive on Nationwide dams.

19 FINK 8053 OF 504 OD

Calved: 9/3/18 Reg#: 19620468 Tattoo: 8053
 S A V RESOURCE 1441
 BARRETT OVERDRIVE 4856
 BARRETTS MISS 4004 2526 BAR
 S A V FINAL ANSWER 0035
 RAR FINK MISS 504 34 FA
 ARDERY MISS 34 1403 1691

CED	BW	WW	YW	DMI	SC	Doc	Milk
11	1.3	54	93	0.51	0.68	7	26
MW	\$EN	CW	Marb	RE	\$M	\$W	\$B
32	-6	35	0.39	0.95	40	61	124

Really nice Overdrive son out of a double-bred 5522 grandam. Double-bred to the Fink Miss cow family. Overdrive's EPDs continue to solidify him as one of the best and balanced bulls in the breed.

23 BARRETT 8708 543 OD

Calved: 9/29/18 Reg#: 19589098 Tattoo: 8708
 S A V RESOURCE 1441
 BARRETT OVERDRIVE 4856
 BARRETTS MISS 4004 2526 BAR
 SITZ DASH 10277
 BARRETT MISS 543 327 DA
 BARRETT MISS 327 4004 5522

CED	BW	WW	YW	DMI	SC	Doc	Milk
10	-0.9	36	71	0.61	0.16	28	32
MW	\$EN	CW	Marb	RE	\$M	\$W	\$B
12	1	21	0.41	0.46	54	49	90



Double-bred 4004 here from a really nice Dash female. The grandam, 327, is a full sib to our Walt bull, sire to lots 48-50. The 5522 x 4004 cross proved to be as expected in fertility, longevity, and structure, and their disposition has been good.

FALL 2018 ANGUS

24 BARRETT 8710A 4040 OD

Calved: 9/30/18 Reg#: 19537644 Tattoo: 8710
 S A V RESOURCE 1441
 BARRETT OVERDRIVE 4856
 BARRETTS MISS 4004 2526 BAR
 COLE CREEK CEDAR RIDGE 1V
 BARRETT MISS 4040 OF 205 CR
 BARRETT MISS 205 025 9074

CED	BW	WW	YW	DMI	SC	Doc	Milk
9	1.1	49	91	0.92	0.88	11	34
MW	\$EN	CW	Marb	RE	\$M	\$W	\$B
34	-11	31	0.35	0.44	55	62	99

Again here, fertility and longevity reflected in this bull's dam, granddam, and great-grandam. Cedar Ridge seems to fit in nicely wherever we have used him.

25 BARRETT 8709 5108 OD

Calved: 9/17/18 Reg#: 19589099 Tattoo: 8709
 S A V RESOURCE 1441
 BARRETT OVERDRIVE 4856
 BARRETTS MISS 4004 2526 BAR
 G A R PREDESTINED
 BARRETTS MISS 5108 3305 PRE
 BARRETTS MISS 3305 2238 616

CED	BW	WW	YW	DMI	SC	Doc	Milk
4	2.2	46	85	0.39	0.81	26	27
MW	\$EN	CW	Marb	RE	\$M	\$W	\$B
35	-8	33	0.39	0.59	64	47	117

Very well-balanced Overdrive son out of a 12-year-old Predestined dam who has a calving interval of 10 @ 368 and bred first AI again this year.

26 BARRETT 8707 431 OD

Calved: 8/25/18 Reg#: 19589090 Tattoo: 8707
 S A V RESOURCE 1441
 BARRETT OVERDRIVE 4856
 BARRETTS MISS 4004 2526 BAR
 SITZ DASH 10277
 BARRETT RITA 431 133 DA
 BARRETT RITA 133 OF 5904 FA



CED	BW	WW	YW	DMI	SC	Doc	Milk
11	-1	45	92	0.84	1.46	21	24
MW	\$EN	CW	Marb	RE	\$M	\$W	\$B
47	-12	28	0.45	0.64	50	46	117

Overdrive x Dash x Final Answer x 616 x 5522... 5 generations of some of the best female makers in the breed represented here.

27 BARRETT 8706 203 OD

Calved: 9/25/18 Reg#: 19589089 Tattoo: 8706
 S A V RESOURCE 1441
 BARRETT OVERDRIVE 4856
 BARRETTS MISS 4004 2526 BAR
 L T 598 BANDO 9074
 BARRETT PRIDE 203 028 9074
 BARRETTS PRIDE 028 4807 GN

CED	BW	WW	YW	DMI	SC	Doc	Milk
9	0.6	47	86	0.73	0.24	24	34
MW	\$EN	CW	Marb	RE	\$M	\$W	\$B
34	-11	28	0.28	0.54	62	60	96

The dam of this bull, 203, may be our best 9074 daughter, hitting for us year after year. She has a calving interval of 6 @ 377.

28 FINK 8301 OF 0442 SW

Calved: 8/31/18 Reg#: 19626760 Tattoo: 8301
 CONNEALY ONWARD
 SITZ WISDOM 481T
 SITZ ELLUNA ELITE 94P
 SITZ DASH 10277
 FINK MISS 0442 1674 DA
 FINK MISS 1674 9350 205



CED	BW	WW	YW	DMI	SC	Doc	Milk
8	2.1	61	117	1.32	0.99	24	36
MW	\$EN	CW	Marb	RE	\$M	\$W	\$B
60	-24	45	0.72	0.55	58	72	137

Super good Wisdom with some extra frame and thickness. This bull ratioed good in his weaning group. Dash, K205 makes nice udders and is expected, not hoped for. Problem-free, balanced bulls, no extremes or fads at Finks.

29 FINK 8058 OF 1350 WI

Calved: 8/31/18 Reg#: 19480025 Tattoo: 8058
 CONNEALY ONWARD
 SITZ WISDOM 481T
 SITZ ELLUNA ELITE 94P
 N BAR PRIME TIME D806
 FINK DONNA 1350 9402 NBPT
 FINK DONNA 9402 9140 OT



CED	BW	WW	YW	DMI	SC	Doc	Milk
11	0.6	54	118	1.46	1.47	22	24
MW	\$EN	CW	Marb	RE	\$M	\$W	\$B
65	-20	48	0.55	0.19	53	50	140

Balanced genetics that can create profit in all areas is your best choice. Chasing marbling in the Angus breed is ending up in bad feet, lower fertility, smaller srotal, harder doing in most. Bulls like this can sire excellent percent choice and prime.

30 FINK 8295 OF 0303 SW

Calved: 9/8/18 Reg#: 19626759 Tattoo: 8295
 CONNEALY ONWARD
 SITZ WISDOM 481T
 SITZ ELLUNA ELITE 94P
 FINK 9173 OF 54 MC
 FINK BEAUTY 0303 0106 MC59
 RENFRO BEAUTY 0106 0806 FK1



CED	BW	WW	YW	DMI	SC	Doc	Milk
10	1.5	60	102	0.65	1.07	0	33
MW	\$EN	CW	Marb	RE	\$M	\$W	\$B
25	-6	48	0.61	0.63	75	76	142

Wisdom sons recognized nationwide for being very balanced in all EPDs. Yes, we can use extreme-numbered EPDs like anyone else, but who pays the price? Our concern is our commercial customers, not extreme EPDs that can change your herd to look like Wagyu.

31 FINK 8210 5234 WI

Calved: 9/5/18 Reg#: 19450446 Tattoo: 8210
 CONNEALY ONWARD
 SITZ WISDOM 481T
 SITZ ELLUNA ELITE 94P
 SITZ DASH 10277
 FINK MISS 5234 2234 DASH
 FINK FORMERA 2234 5557 BI



CED	BW	WW	YW	DMI	SC	Doc	Milk
13	0	49	95	1.29	1.38	18	33
MW	\$EN	CW	Marb	RE	\$M	\$W	\$B
32	-9	31	0.65	0.52	56	62	108

Wisdom semen is in short supply. He's not perfect, but with high accuracy he covers many bases for different environments. Remember huge yearling weights end up with huge mature weight cows. They forget to tell you that! We have Charolais for terminal genetics and added pounds!!!

FALL 2018 ANGUS

32 FINK 8150 4904 WI

Calved: 8/28/18 Reg#: 19639597 Tattoo: 8150
 CONNEALY ONWARD
 SITZ WISDOM 481T
 SITZ ELLUNA ELITE 94P
 COLE CREEK CEDAR RIDGE 1V
 FINK MISS 4904 0879 CR
 FINK MISS 0879 7100 EFF



CED	BW	WW	YW	DMI	SC	Doc	Milk
11	1.3	64	118	0.79	1.25	22	20
MW	\$EN	CW	Marb	RE	\$M	\$W	\$B
58	-15	45	0.58	0.37	69	61	148

Angus bulls' first job is to make replacements—not terminal. We require Fink bulls to semen-test early, heifers to breed early, and have balanced genetics to make our customers profitable long-term. This bull can control mature cow size, add growth and carcass.

33 FINK 8068 OF 5049 WI

Calved: 9/13/18 Reg#: 19617411 Tattoo: 8068
 CONNEALY ONWARD
 SITZ WISDOM 481T
 SITZ ELLUNA ELITE 94P
 S A V RESOURCE 1441
 FINK MISS 5049 6480 RCE
 FINK MISS 6480 445 NBPT

CED	BW	WW	YW	DMI	SC	Doc	Milk
7	2.1	63	123	1.56	0.78	16	22
MW	\$EN	CW	Marb	RE	\$M	\$W	\$B
51	-12	55	0.18	0.81	61	60	135

Moderate-framed, pounds, stacked pedigree that should leave nice females. Good, solid bull to make a super set of steers also. Daughters should stay more moderate and be about right!

34 FINK 8294 OF 0102 SW

Calved: 8/30/18 Reg#: 19626758 Tattoo: 8294
 CONNEALY ONWARD
 SITZ WISDOM 481T
 SITZ ELLUNA ELITE 94P
 FINK 7140 OF 5592 349M
 RENFRO BEAUTY 0102 701 FK120
 RENFROS 0701 OF 1143 5016

CED	BW	WW	YW	DMI	SC	Doc	Milk
2	3	53	95	0.68	0.86	19	29
MW	\$EN	CW	Marb	RE	\$M	\$W	\$B
31	-7	33	1.05	0.3	58	57	142

Balanced EPDs with generations of genetics used nationwide.

35 FINK 8291 OF 5367 WI

Calved: 10/11/18 Reg#: 19617342 Tattoo: 8291
 CONNEALY ONWARD
 SITZ WISDOM 481T
 SITZ ELLUNA ELITE 94P
 COLE CREEK CEDAR RIDGE 1V
 FINK FORMERA 5367 1334 CR
 FINK FORMERA 1334 9375 FA



CED	BW	WW	YW	DMI	SC	Doc	Milk
7	1.3	59	98	0.75	1.18	20	25
MW	\$EN	CW	Marb	RE	\$M	\$W	\$B
35	-6	32	0.64	0.31	64	66	113

Younger bull — but stacked to reduce mature cow size—from the dam's side. Great, predictable production, heifer pregnancy, carcass and maternal traits. There will be bigger, stouter bulls in this sale, but this one may sire as good of females as any. Then throw a Charolais bull on this bull's daughters—that's how you make a profit.

36 FINK 8326 OF 5389 XXP

Calved: 8/30/18 Reg#: 19481550 Tattoo: 8326
 N BAR EMULATION EXT
 SINCLAIR EMULATION XXP
 N BAR PRIMROSE Y3051
 K C F BENNETT INDEX
 FINK MISS 5389 9408 BI
 FINK MISS 9408 5523 NW

CED	BW	WW	YW	DMI	SC	Doc	Milk
1	2.4	48	88	0.72	1.02	21	28
MW	\$EN	CW	Marb	RE	\$M	\$W	\$B
15	1	25	0.65	0.06	57	53	97

Full brothers: 8326 and 8327

37 FINK 8327 OF 5389 XXP

Calved: 9/1/18 Reg#: 19481551 Tattoo: 8327
 N BAR EMULATION EXT
 SINCLAIR EMULATION XXP
 N BAR PRIMROSE Y3051
 K C F BENNETT INDEX
 FINK MISS 5389 9408 BI
 FINK MISS 9408 5523 NW

CED	BW	WW	YW	DMI	SC	Doc	Milk
1	2.4	54	97	0.72	-0.01	13	26
MW	\$EN	CW	Marb	RE	\$M	\$W	\$B
45	-12	38	0.36	0.1	54	55	110

Two power-stacked XXP sons. XXP is an outcross sire that has great docility, heifer pregnancy and carcass. This bull's grandam is one of the best Net Worth daughters we have ever had.



Group of Mexican Cattlemen attending our Fall 2019 sale. Jim Zoller, in the gray t-shirt at back, let them clean him out at the roulette table.



One of the group from Mexico was a big winner at the Fall 2019 pre-sale party.

FALL 2018 ANGUS

38 FINK 8052 OF 659 K205

Calved: 8/28/18 Reg#: 19621038 Tattoo: 8052
 NICHOLS EXTRA H6
 NICHOLS EXTRA K205
 NICHOLS BLACK HEIRESS F346
 BARRETT OVERDRIVE 4856
 RAR FINK DONNA 659 1350 OD
 FINK DONNA 1350 9402 NBPT

CED	BW	WW	YW	DMI	SC	Doc	Milk
2	2.8	54	102	0.87	1.12	18	32
MW	\$EN	CW	Marb	RE	\$M	\$W	\$B
22	-4	34	0.67	0.29	71	62	124

Really nice K205 son. Can't imagine any bull being able to sire better udders than this bull should! Could be one of the best all-around bulls in this sale. Cowmen may want to look this one up.

39 FINK 8180 2265 K205

Calved: 9/5/18 Reg#: 19450418 Tattoo: 8180
 NICHOLS EXTRA H6
 NICHOLS EXTRA K205
 NICHOLS BLACK HEIRESS F346
 WULFFS EXT 6106
 FINK MISS 2265 5522 6106
 FINK MISS 5522 7326 878

CED	BW	WW	YW	DMI	SC	Doc	Milk
11	-0.2	40	62	0.44	0.99	19	30
MW	\$EN	CW	Marb	RE	\$M	\$W	\$B
-1	7	16	0.5	-0.11	75	55	69

We won't have a lot of K205 sons in the future as semen is held by a very few, but we will still use him where we can. Several generations of 5522 genetics—usually a good bet for cows that last longer than 5 years!

40 FINK 8051 OF 657 K205

Calved: 9/5/18 Reg#: 19621026 Tattoo: 8051
 NICHOLS EXTRA H6
 NICHOLS EXTRA K205
 NICHOLS BLACK HEIRESS F346
 BARRETT OVERDRIVE 4856
 RAR FINK DONNA 657 1384 OD
 FINK DONNA 1384 5636 NW

CED	BW	WW	YW	DMI	SC	Doc	Milk
7	2.6	68	124	1.75	1.59	24	25
MW	\$EN	CW	Marb	RE	\$M	\$W	\$B
85	-30	48	0.39	0.38	45	65	117

Another bull with 3 generations of 5522 genetics. If someone can show us a line of Angus genetics that will last longer than 5522, I'd be happy. Replacing and making excuses for poor feet, poor fertility, hard-doing cows that fall apart are expensive, **NOT PROFITABLE.**

41 FINK 8344 2233 K205

Calved: 9/14/18 Reg#: 19450450 Tattoo: 8344
 NICHOLS EXTRA H6
 NICHOLS EXTRA K205
 NICHOLS BLACK HEIRESS F346
 S A V FINAL ANSWER 0035
 FINK PRIDE 2233 8280 FA
 FINK PRIDE 8280 1580 K205

CED	BW	WW	YW	DMI	SC	Doc	Milk
9	0.9	50	88	0.73	0.95	28	26
MW	\$EN	CW	Marb	RE	\$M	\$W	\$B
13	3	34	0.29	0.17	70	59	102

Double-bred K205 son—should add to his predictability in siring really nice females. High heifer pregnancy, carcass quality, plenty of growth.

**Potential
Heifer Bull on
Larger Heifers**

42 FINK 8193 6811 ENCH

Calved: 9/7/18 Reg#: 19450430 Tattoo: 8193
 SINCLAIR EMULATION XXP
 SVR XXP ENCHANTED 5135
 S C C ENCHANTRESS 3F1 X412
 S A V RESOURCE 1441
 FINK MISS 6811 2241 RCE
 FINK MISS 2241 510 205

CED	BW	WW	YW	DMI	SC	Doc	Milk
2	1.1	57	98	1.54	0.34	5	15
MW	\$EN	CW	Marb	RE	\$M	\$W	\$B
51	-9	42	0.02	0.37	48	49	81

Enchanted son out of a Resource-Emulation bred female. We expect Enchanted daughters to be very nice, moderate-sized cows with beautiful udders. As the future will keep pressing for reduced cost, we think cow size with a terminal sire will be one of the answers.

43 FINK 8063 OF 6950 ENCH

Calved: 8/27/18 Reg#: 19482115 Tattoo: 8063
 SINCLAIR EMULATION XXP
 SVR XXP ENCHANTED 5135
 S C C ENCHANTRESS 3F1 X412
 S A V RESOURCE 1441
 FINK PRIDE 6950 2501 RES
 FINK PRIDE 2501 563 K205

CED	BW	WW	YW	DMI	SC	Doc	Milk
n/a	1	43	83	n/a	n/a	n/a	20
MW	\$EN	CW	Marb	RE	\$M	\$W	\$B
n/a	-2	n/a	n/a	n/a	n/a	n/a	34

5522 represented in this pedigree 4 times!! This bull's daughters, when they are 4 years old, may be just what you want. We missed getting this bull's DNA.

44 FINK 8127 OF 4928 ENCHANT

Calved: 9/16/18 Reg#: 19481512 Tattoo: 8127
 SINCLAIR EMULATION XXP
 SVR XXP ENCHANTED 5135
 S C C ENCHANTRESS 3F1 X412
 COLE CREEK CEDAR RIDGE 1V
 FINK MISS 4928 6471 CR
 FINK MISS 6471 4041 NBPT

CED	BW	WW	YW	DMI	SC	Doc	Milk
10	-1.8	35	59	0.5	0.34	11	16
MW	\$EN	CW	Marb	RE	\$M	\$W	\$B
-4	16	15	0.51	0.32	65	34	77

This bull is not bred for growth. As an industry we are on a current course of huge cows, more costs related to that, less longevity, and infertile cows due to not enough feed to maintain them. If you want to look long-term, bulls bred like this may be the answer. You can add pounds and muscle through terminal genetics.

Heifer Bull



Kaleigh Bloomfield, one of the Prairie Valley Vet staff, always working with a smile!

FALL 2018 ANGUS

45

BARRETT 8175 6819 CB

Calved: 8/29/18 Reg#: 19450413 Tattoo: 8175
 KM BROKEN BOW 002
 SPRING COVE CROSSBOW
 SPRING COVE PRETTY 205
 GARDENS WAVE
 FINK MISS 6819 1333 WV
 FINK FORMERA 1333 9375 FA



CED	BW	WW	YW	DMI	SC	Doc	Milk
16	-2.8	34	61	-0.23	-0.25	8	30
MW	\$EN	CW	Marb	RE	\$M	\$W	\$B
-6	8	19	0.97	0.46	60	50	130

Lower growth, high marbling, lower mature weight, positive \$E, calving ease. All high accuracy, moderate-framed bull as he is bred to be. Use this bull's daughters with a Charolais bull that has growth and carcass. Maybe the best answer?

48

BARRETT 8719 124 WT

Calved: 8/29/18 Reg#: 19589095 Tattoo: 8719
 EMULATION N BAR 5522
 BARRETT WALT 384
 BARRETT'S MISS 4004 2526 BAR
 S A V FINAL ANSWER 0035
 BARRETT MISS 124 OF 5108 FA
 BARRETT'S MISS 5108 3305 PRE



CED	BW	WW	YW	DMI	SC	Doc	Milk
12	-2.2	40	66	-0.52	0.6	19	20
MW	\$EN	CW	Marb	RE	\$M	\$W	\$B
17	5	21	0.53	0.5	54	43	123

The dam of this bull is the grandam of lot 47 and has a calving interval of 7 at 367. Personally, on our operation, Walt sires beautiful, moderate, exceptionally-footed, fertile, females. Grandam also has a bull in sale as lot 25. Longevity top and bottom here.

49

BARRETT 8718 035 WT

Calved: 8/28/18 Reg#: 19589103 Tattoo: 8718
 EMULATION N BAR 5522
 BARRETT WALT 384
 BARRETT'S MISS 4004 2526 BAR
 GARRET'S NATIONWIDE 8001
 BARRETT'S RITA 035 OF 4606 GN
 BARRETT'S RITA 4606 1504 PT



CED	BW	WW	YW	DMI	SC	Doc	Milk
11	0.1	54	97	0.75	0.03	7	19
MW	\$EN	CW	Marb	RE	\$M	\$W	\$B
62	-16	30	0.74	0.63	44	49	133

The Walts are a good set, uniform and built similar. Moderate milk, fleshing ability, Walt has been used very successfully in thousands of commercial heifers. Low birthweight and calving ease.

46

BARRETT 8411 636 CR

Calved: 9/3/18 Reg#: 19419091 Tattoo: 8411
 COLE CREEK BLACK CEDAR 46P
 COLE CREEK CEDAR RIDGE 1V
 COLE CREEK CLOVANADA 49S
 BARRETT SUPER DUTY 4855
 BARRETT MISS 636 242 SD
 BARRETT MISS 242 920 NW



CED	BW	WW	YW	DMI	SC	Doc	Milk
15	-1.9	48	89	0.75	1.07	21	26
MW	\$EN	CW	Marb	RE	\$M	\$W	\$B
5	7	19	0.49	0.54	80	61	98

Incredible cow family and the addition of Cedar Ridge worked really well. Longevity! Dam is a picture-perfect female out of an equally beautiful Net Worth dam. This bull ranks top 2% CED, 4% BW, and top 3% \$M in the Angus breed.

50

BARRETT 8720 335 WT

Calved: 9/23/18 Reg#: 19589088 Tattoo: 8720
 EMULATION N BAR 5522
 BARRETT WALT 384
 BARRETT'S MISS 4004 2526 BAR
 S A V FINAL ANSWER 0035
 BARRETT MISS 335 012 FA
 BARRETT'S MISS 012 3608 EFF



CED	BW	WW	YW	DMI	SC	Doc	Milk
13	-2.8	48	80	0.63	-0.03	16	30
MW	\$EN	CW	Marb	RE	\$M	\$W	\$B
21	-3	22	0.47	0.37	61	66	86

3 generations of low birth and calving ease in this bull. He ranks in the top 10% for CED, and top 2% for BW in the Angus breed.

47

BARRETT 8705 517 CR

Calved: 9/13/18 Reg#: 19589094 Tattoo: 8705
 COLE CREEK BLACK CEDAR 46P
 COLE CREEK CEDAR RIDGE 1V
 COLE CREEK CLOVANADA 49S
 BARRETT WALT 384
 BARRETT MISS 517 124 WT
 BARRETT MISS 124 OF 5108 FA



CED	BW	WW	YW	DMI	SC	Doc	Milk
6	-0.4	43	77	0.35	-0.48	18	31
MW	\$EN	CW	Marb	RE	\$M	\$W	\$B
14	0	20	0.26	0.48	70	57	90

We will continue with Cedar Ridge x Walt. Dam is one of our favorite Walt daughters out of a great Final Answer daughter. Dam, grandam, and great-grandam still producing. This bull has a large unique birthmark on the side of his face. He will be easy-to-spot!



Spread Oak Farm, Georgia

FALL 2018 ANGUS

51 BARRETT 8704 537 BUD

Calved: 10/5/18 Reg#: 19589091 Tattoo: 8704
 B A R EXT TRAVELER 205
 BARRETT BUD 685 2526 BAR
 FINKS MISS 2526 9078 5175
 SITZ DASH 10277
 BARRETT MISS 537 260 DA
 BARRETT MISS 260 1303 NW

CED	BW	WW	YW	DMI	SC	Doc	Milk
8	0	47	83	0.93	0.84	17	35
MW	\$EN	CW	Marb	RE	\$M	\$W	\$B
22	-6	35	0.59	0.55	60	64	108

At 13 years of age, we flushed 2526 to get more of our foundation cow, 4004 (the dam of Super Duty, Overdrive and Walt). We have 3 full sisters and 1 full brother, the sire of this group of bulls.

52 BARRETT 8703 510 BUD

Calved: 10/8/18 Reg#: 19589097 Tattoo: 8703
 B A R EXT TRAVELER 205
 BARRETT BUD 685 2526 BAR
 FINKS MISS 2526 9078 5175
 S A V RESOURCE 1441
 BARRETT MISS 510 025 RE
 BARRETT MISS 205 OF 1807 GN

CED	BW	WW	YW	DMI	SC	Doc	Milk
-1	4.3	46	85	0.28	1.56	7	27
MW	\$EN	CW	Marb	RE	\$M	\$W	\$B
49	-14	41	0.31	0.89	43	38	135

A good Bud son from a really nice Resource daughter. Our Bud calves are born easy and are extremely thrifty – up and going.

53 BARRETT 8702 419 BUD

Calved: 9/19/18 Reg#: 19593633 Tattoo: 8702
 B A R EXT TRAVELER 205
 BARRETT BUD 685 2526 BAR
 FINKS MISS 2526 9078 5175
 COLE CREEK CEDAR RIDGE 1V
 BARRETT RITA 419 157 CR
 BARRETT RITA 157 OF 1709 GN

CED	BW	WW	YW	DMI	SC	Doc	Milk
15	-2.6	37	67	-0.02	0.99	23	38
MW	\$EN	CW	Marb	RE	\$M	\$W	\$B
-26	6	20	0.51	0.66	86	64	110

Should be a good mating to watch – we will use more Bud x Cedar Ridge. His dam has a calving interval of 4 at 366, and his grandam is represented earlier in the Overdrive group with lot 22. This bull ranks in the top 2% CED, 2% BW, 4% HP, 1% \$M in the Angus breed.



Scott Varnum, Lithia, Florida, with a 'pummelo.' The pummelo is an ancestor of the grapefruit and over twice the size.

54 BARRETT 8714 657 REV

Calved: 9/14/18 Reg#: 19589085 Tattoo: 8714
 CANDOLIER FOREVER 376
 SVR REVOLUTION 3173
 S C C ENCHANTRESS 3F1 X412
 B A R EXT TRAVELER 205
 BARRETT MISS 657 2526 BAR
 FINKS MISS 2526 9078 5175



CED	BW	WW	YW	DMI	SC	Doc	Milk
10	0.2	41	72	0.23	0.28	14	22
MW	\$EN	CW	Marb	RE	\$M	\$W	\$B
-6	13	10	0.32	0.12	78	45	68

Strong maternal genetics here with the Candolier Forever 376 son, Revolution + a full sister to our 4004 cow. 4004 is the dam of Super Duty, Overdrive, Walt, and many other bulls working in purebred and commercial operations across the country.



Andy Bryant, Tennessee



Blue Valley FFA Alumni Banquet, February 2020. Community efforts that night raised over \$22,000 for the Blue Valley FFA chapter.



National FFA Animal Systems tour, February 2020. Students from 26 states. Really a great group.

SPRING 2019 ANGUS

55 FINK 9501 OF 3360 SD

Calved: 2/10/19 Reg#: 19640002 Tattoo: 9501
 S A V RESOURCE 1441
 BARRETT SUPER DUTY 4855
 BARRETTS MISS 4004 2526 BAR
 FINK 1691 OF 5523 EXT
 FINK FORMERA 3360 1334 1691
 FINK FORMERA 1334 9375 FA

CED	BW	WW	YW	DMI	SC	Doc	Milk
-1	5.6	66	121	1.18	1.39	11	17
MW	\$EN	CW	Marb	RE	\$M	\$W	\$B
73	-20	57	0.07	0.97	43	42	136

May be one of the best Super Duty sons we've sold to date! Dam is backed by some of the best genetics we've developed. We hope you will like him also. Fink 1691 is one of the best female makers we've ever raised. This bull ratioed good in his weaning group.

56 FINK 9516 OF 3399 SD

Calved: 2/24/19 Reg#: 19640012 Tattoo: 9516
 S A V RESOURCE 1441
 BARRETT SUPER DUTY 4855
 BARRETTS MISS 4004 2526 BAR
 K C F BENNETT ABSOLUTE
 FINK FRVR LADY 3399 6313 AB
 SUNSET VALLEY FRVR LADY 6313

CED	BW	WW	YW	DMI	SC	Doc	Milk
4	2.5	59	106	1.24	1.14	19	24
MW	\$EN	CW	Marb	RE	\$M	\$W	\$B
57	-16	46	0.65	0.54	49	57	128

Full brothers: 9516, 9519, 9521.

57 FINK 9519 OF 3399 SD

Calved: 2/27/19 Reg#: 19640015 Tattoo: 9519
 S A V RESOURCE 1441
 BARRETT SUPER DUTY 4855
 BARRETTS MISS 4004 2526 BAR
 K C F BENNETT ABSOLUTE
 FINK FRVR LADY 3399 6313 AB
 SUNSET VALLEY FRVR LADY 6313

CED	BW	WW	YW	DMI	SC	Doc	Milk
9	1.2	46	91	1.24	0.63	17	37
MW	\$EN	CW	Marb	RE	\$M	\$W	\$B
45	-18	40	0.49	0.69	51	58	111

Full brothers: 9516, 9519, 9521.

58 FINK 9521 OF 3399 SD

Calved: 2/23/19 Reg#: 19640016 Tattoo: 9521
 S A V RESOURCE 1441
 BARRETT SUPER DUTY 4855
 BARRETTS MISS 4004 2526 BAR
 K C F BENNETT ABSOLUTE
 FINK FRVR LADY 3399 6313 AB
 SUNSET VALLEY FRVR LADY 6313

CED	BW	WW	YW	DMI	SC	Doc	Milk
7	2.8	69	121	1.66	2.02	15	29
MW	\$EN	CW	Marb	RE	\$M	\$W	\$B
55	-18	50	0.59	0.73	63	75	120

I suggest taking a good look at this set of full brothers if you need proven genetics, balanced and profitable. Look past the weight difference in 9516, lighter due to recipient dam. They are all made nice. Dam is grandam of our high-selling bull in the Fall 2019 sale to Billy Estrada in Mexico.

59 FINK 9518 OF 5365 SD

Calved: 2/25/19 Reg#: 19640014 Tattoo: 9518
 S A V RESOURCE 1441
 BARRETT SUPER DUTY 4855
 BARRETTS MISS 4004 2526 BAR
 GARDENS WAVE
 FINK MISS 5365 5521 WAVE
 FINK MISS 5521 7326 878

CED	BW	WW	YW	DMI	SC	Doc	Milk
-6	4.5	78	140	1.72	2.38	16	32
MW	\$EN	CW	Marb	RE	\$M	\$W	\$B
88	-36	64	0.44	0.9	50	77	149

Full brothers: 9518 and 9517

60 FINK 9517 OF 5365 SD

Calved: 3/5/19 Reg#: 19640013 Tattoo: 9517
 S A V RESOURCE 1441
 BARRETT SUPER DUTY 4855
 BARRETTS MISS 4004 2526 BAR
 GARDENS WAVE
 FINK MISS 5365 5521 WAVE
 FINK MISS 5521 7326 878

CED	BW	WW	YW	DMI	SC	Doc	Milk
-2	4.2	48	83	0.52	1.33	12	29
MW	\$EN	CW	Marb	RE	\$M	\$W	\$B
13	2	44	0.34	0.43	65	49	117

Full brothers whose dam is our favorite Wave daughter; grandam was our favorite 878, and great-grandam our favorite 692. In a world of EPDs, DNA, fat ultrasounds, etc., that doesn't mean much to some. It does to us, along with the data! One without the other doesn't work! 9517 is behind due to recipient dam—take a second look at him.



K-State Collegiate Cattlemen and Cattlewoman's Christmas Party
 December 2019.

61 FINK 9507 OF 5374 WI

Calved: 2/19/19 Reg#: 19640001 Tattoo: 9507
 CONNEALY ONWARD
 SITZ WISDOM 481T
 SITZ ELLUNA ELITE 94P
 COLE CREEK CEDAR RIDGE 1V
 FINK MISS 5374 1314 CR
 FINK MISS 1314 5523 EXT

CED	BW	WW	YW	DMI	SC	Doc	Milk
11	1.5	60	109	1.06	1.32	14	26
MW	\$EN	CW	Marb	RE	\$M	\$W	\$B
39	-9	45	0.36	0.29	76	65	118

Potential
 Heifer Bull on
 Larger Heifers

If you know Angus genetics, you will recognize all players in this pedigree. Solid on feet, fertility, longevity here.

SPRING 2019 ANGUS

62 FINK 9500 OF 3379 WI

Calved: 2/20/19 Reg#: 19640000 Tattoo: 9500
 CONNEALY ONWARD
 SITZ WISDOM 481T
 SITZ ELLUNA ELITE 94P
 S A V FINAL ANSWER 0035
 FINK BONNIE 3379 522 FA
 FINKS BONNIE 522 0372 5522

CED	BW	WW	YW	DMI	SC	Doc	Milk
4	2.5	73	135	1.49	1	28	19
MW	\$EN	CW	Marb	RE	\$M	\$W	\$B
83	-26	59	0.87	0.15	60	63	168

We will continue to use Wisdom. His EPDs continue to be very balanced for many traits, the kind we try to find. EPDs are easy to read and imagine all the benefits you can get—trouble is with extremes are also generally extreme downfalls! Balance will keep you in business.

63 FINK 9543 OF 5375 WI

Calved: 2/15/19 Reg#: 19640017 Tattoo: 9543
 CONNEALY ONWARD
 SITZ WISDOM 481T
 SITZ ELLUNA ELITE 94P
 COLE CREEK CEDAR RIDGE 1V
 FINK MISS 5375 1314 CR
 FINK MISS 1314 5523 EXT

CED	BW	WW	YW	DMI	SC	Doc	Milk
-2	2.3	65	128	1.48	1.79	25	30
MW	\$EN	CW	Marb	RE	\$M	\$W	\$B
66	-24	55	0.54	0.51	61	68	149

Maternal genetics is what we try to do in the Angus breed. Truth is very few Angus genetics lack excellent marbling, so trying to make Angus a 'Waygu' is really kind of puzzling isn't it? We know maternal-terminal approach to breeding cattle is the most profitable for most.

64 FINK 9515 OF 5381 XXP

Calved: 2/27/19 Reg#: 19640011 Tattoo: 9515
 N BAR EMULATION EXT
 SINCLAIR EMULATION XXP
 N BAR PRIMROSE Y3051
 COLE CREEK CEDAR RIDGE 1V
 FINK MISS 5381 1314 CR
 FINK MISS 1314 5523 EXT

Potential Heifer Bull on Larger Heifers

CED	BW	WW	YW	DMI	SC	Doc	Milk
0	2	47	88	1.02	0.28	17	24
MW	\$EN	CW	Marb	RE	\$M	\$W	\$B
23	0	36	0.7	0.03	56	47	112

Full brothers: 9515, 9520.

65 FINK 9520 OF 5381 XXP

Calved: 2/23/19 Reg#: 19642856 Tattoo: 9520
 N BAR EMULATION EXT
 SINCLAIR EMULATION XXP
 N BAR PRIMROSE Y3051
 COLE CREEK CEDAR RIDGE 1V
 FINK MISS 5381 1314 CR
 FINK MISS 1314 5523 EXT

Potential Heifer Bull on Larger Heifers

CED	BW	WW	YW	DMI	SC	Doc	Milk
2	1.5	68	121	1.72	0.93	12	27
MW	\$EN	CW	Marb	RE	\$M	\$W	\$B
54	-17	51	0.69	0.2	55	75	129

Talk about females designed for long-term cowherds! Balance is not as much fun to talk about as 'Top 1%...' for a couple of traits. We enjoy talking about cowmaking, long-lasting females! Full-brother ET bulls that came in lighter due to recipient dams—keep eyes open here—these could sire the best females in the sale.

66 FINK 9502 OF 6453 OD

Calved: 2/15/19 Reg#: 19640003 Tattoo: 9502
 S A V RESOURCE 1441
 BARRETT OVERDRIVE 4856
 BARRETT'S MISS 4004 2526 BAR
 GARDENS WAVE
 FINK ERICA 6453 2229 WAVE
 FINK ERICA 2229 0847 FA

CED	BW	WW	YW	DMI	SC	Doc	Milk
3	3	63	105	1.42	1.51	25	23
MW	\$EN	CW	Marb	RE	\$M	\$W	\$B
66	-20	46	0.89	0.57	36	59	130

Nice combination of Overdrive, Wave, Final Answer and Net Present Value. Balanced, no extremes to get a producer in trouble. EPDs are a tool, that often get misused in chasing extremes.

67 FINK 9513 OF 5385 OD

Calved: 3/11/19 Reg#: 19640009 Tattoo: 9513
 S A V RESOURCE 1441
 BARRETT OVERDRIVE 4856
 BARRETT'S MISS 4004 2526 BAR
 COLE CREEK CEDAR RIDGE 1V
 FINK MISS 5385 1316 CR
 FINK MISS 1316 5523 EXT

CED	BW	WW	YW	DMI	SC	Doc	Milk
0	4.7	57	101	0.86	1.41	14	21
MW	\$EN	CW	Marb	RE	\$M	\$W	\$B
40	-7	28	0.4	0.49	54	45	103

Want a thick-butted, deep, moderate-framed bull out of the right cow family? Here he is. We have a dozen cows bred exactly like this bull's dam—they were created for a reason, not extremes.

68 FINK 9510 OF 5380 OD

Calved: 3/15/19 Reg#: 19640006 Tattoo: 9510
 S A V RESOURCE 1441
 BARRETT OVERDRIVE 4856
 BARRETT'S MISS 4004 2526 BAR
 COLE CREEK CEDAR RIDGE 1V
 FINK MISS 5380 1314 CR
 FINK MISS 1314 5523 EXT

CED	BW	WW	YW	DMI	SC	Doc	Milk
3	2.5	45	87	0.63	0.69	21	33
MW	\$EN	CW	Marb	RE	\$M	\$W	\$B
12	0	32	0.34	0.34	67	54	110

Embryo bull that came in smaller due to his recipient dam. Bred like the previous bull. Many bargains in past Fink sales are generally ET bulls that came in light. Consider the genetics here!



Huey Howard and Tommy Mann, two of the best cattlemen anywhere. Immokalee, Florida, February 2020.

SPRING 2019 ANGUS

69

FINK 9504 OF 1394 OD

Calved: 2/19/19 Reg#: 19618772 Tattoo: 9504
 S A V RESOURCE 1441
 BARRETT OVERDRIVE 4856
 BARRETT'S MISS 4004 2526 BAR
 S A V NET WORTH 4200
 FINK DONNA 1394 9140 NW
 FINKS DONNA 9140 B430 6148

CED	BW	WW	YW	DMI	SC	Doc	Milk
5	3.8	61	108	1.11	1.27	6	27
MW	\$EN	CW	Marb	RE	\$M	\$W	\$B
53	-16	38	0.1	0.62	50	59	97

Full brothers: 9504 and 9506.

70

FINK 9506 OF 1394 OD

Calved: 2/13/19 Reg#: 19618774 Tattoo: 9506
 S A V RESOURCE 1441
 BARRETT OVERDRIVE 4856
 BARRETT'S MISS 4004 2526 BAR
 S A V NET WORTH 4200
 FINK DONNA 1394 9140 NW
 FINKS DONNA 9140 B430 6148

CED	BW	WW	YW	DMI	SC	Doc	Milk
9	0.8	51	87	0.44	1.14	12	34
MW	\$EN	CW	Marb	RE	\$M	\$W	\$B
37	-12	28	0.46	0.66	44	66	108

Brothers out of a Net Worth donor that is owned by the Arderly's. She has proven to be a top donor for them. The Donna family is known nationwide for moderate, easy-fleshing, long-lasting females.



CHAROLAIS

The beef industry is like everything else—it keeps changing, as the world changes. There will always be a demand for quality beef, the question is how much and how we get there. Charolais-cross cattle have proven they can do it. ‘Smokies,’ or ‘Cinnamon’ cattle sired by good Charolais bulls can hit many targets on a set of British or eared females. High % choice plus prime with **yield grades of 1 to 3**, without an excess of fat (**which costs money to put on**) will continue to be very profitable.

Many folks often ask why we started Charolais in 1999. We felt the direction many were taking in the Angus breed (**more growth, more terminal, more excess past the point of profit**) **was not where we felt the Angus breed was at its best**. Options—start a second breed that was proven in the feedlot and on the rail for our customers to use if they wanted. There was no second thinking the breed—Charolais. **This way we could maintain and constantly improve the Angus female and not risk making her terminal.** Hybred vigor is proven. ‘Bank’ on it.

Our Charolais are bred with attention to all traits, however, first and foremost is birth weight. We have three- to four-generations of lighter birth weight stacked in our pedigrees. We know a live calf makes the most money. We also have developed some of the highest marbling genetics in the breed to make sure our customers hit as many targets as possible. Feet, disposition, fertility, ‘slicking off,’ are just as important as all the other traits. Hybred vigor is a fact of life.


Excess fat costs someone money — muscle, gain, conversions, lean retail cuts, are a fact of life. Total pounds (the right kind of pounds) are a fact of life. Need extra pounds off a set of British cows without calving problems? **Call us!**

We DNA both the Angus and Charolais bulls. The results will be reflected in both breeds’ EPDs. DNA is like any other tool—just keep everything in perspective on how you use it. We are trying it to, hopefully, present to you with the most current data to level environmental differences. Because of our large embryo program, cooperator herds, etc., environment can play a large role in actual weaning and yearling weights.

As always, please contact us with any questions

Fink Charolais Bulls' EPDs have been genomically enhanced using Neogen GeneSeek.

Rick Pfortmiller, 785.230.9507, rportmiller@neogen.com

Sons of Gold Standard and Free Lunch in this sale are ranked in the Top 100 bulls in the breed born in Spring 2019 for marbling. This would include thousands of bulls! These bulls' ranking will be marked in red:  for marbling.

REFERENCE SIRES

FINK GOLD STANDARD 0153

Calved: 08/22/2010 EM799353 Tattoo: 0153
 LT Rio Bravo 3181 P LT Rio Blanco 1234 P
 M6 New Standard 842 P ET LT 7N of Duke 9083 P
 M6 Ms Grid Maker 2175 ET M6 Grid Maker 104 PET
 M6 Ms E46's Duke 248 PET

RC Budsmydad 225 Polled RC Bud 04 ET
 Finks Miss 25503575BUDET Miss Showgun RC 416
 WCR Miss Tradition 3575 WCR Sir Tradition 066
 WCR Miss Duke 9026

Proven—one of the highest in the breed. Great disposition unlike any bull, any breed we've worked with. Slick hair. Daughters are nice-uddered in most cases. Top 10% WW. Top 7% YW. Top 1% CW. Top 6% TSI (terminal sire index). Still excellent carcass. Froze thousands of units of sexed semen—not many bulls even qualify for that.



EPD

	#		CE	BW	WW	YW	Milk	MCE	MTL	SC		#		CW	REA	FAT	MARB		TSI
HBWT	22	EPD	7.3	0.5	43	86	11	5.1	32	1.0	PCW	0	EPD	42	0.83	-0.001	0.15	Index	231.70
PBWT	302	Acc	0.59	0.85	0.82	0.73	0.56	0.49	0.65	0.61	PREA	0	Acc	0.33	0.31	0.28	0.26	%RK	6
DPROD	70	%RK	35	50	15	7	45	60	20	40	HULTRA		%RK	1	20	50	30		

EPDS 03-01-2020

VPI FREE LUNCH 708T

Calved: 01/23/07 M736773 Tattoo: 708T
 WCR Prime Cut 764 PLD JWK Impressive D040 ET
 LT Rio Blanco 1234 P WCR Miss Ease 4314
 LT Prairie Maid 4054 HCR Senator 9052 Polled
 LT Prairie Maiden 8016

WCR Prime Cut 764 PLD JWK Impressive D040 ET
 VPI Miss Duchess 404 P WCR Miss Ease 4314
 VCR Miss Duchess 703 PLD VCR Sir Duke 914 PLD
 VCR Miss Delay 560Polled

Very complete sire—used nationwide. Highly proven, and that does make a difference! Great disposition. -1.9 BW; 9.5 CE. 74 YW, top 20%. Huge scrotal.. CW +36, top 3% in the breed. Marbling +46, top 1% in the breed. TSI top 15% in the breed. Semen is extremely limited and not much remains.



EPD

	#		CE	BW	WW	YW	Milk	MCE	MTL	SC		#		CW	REA	FAT	MARB		TSI
HBWT	84	EPD	9.5	-1.9	38	74	3	7.9	22	2.3	PCW	20	EPD	36	0.41	0.059	0.46	Index	225.09
PBWT	1060	Acc	0.75	0.92	0.88	0.84	0.71	0.62	0.77	0.75	PREA	20	Acc	0.47	0.51	0.46	0.49	%RK	15
DPROD	213	%RK	20	15	25	20	85	30	65	1	HULTRA		%RK	3	85	100	1		

EPDS 03-01-2020

WC BIG BEN 9036 P

Calved: 2/26/09 Reg#: EM775980 Tattoo: 9036
 LT Assertion 1277 P Eatons Assert 9171
 LT Bluegrass 4017 P LT Alli's Class 9140 P
 LT Pearl's Breeze 2236 P LT Wyoming Wind 4020 PLD
 LT Unlimited Pearl 7053P

VCR Sir Duke 914 PLD WCR Sir Duke 761
 VCRMISSDUCHESS9506POLLED WCR Miss Mac IV 534
 VCR Miss Perfect 247 PLD VCRSIMAC'SPERFECTION011
 VCR Miss Duke II 054 PLD

Light birthweight, high calving ease sire from ABS. Moderation on frame with muscle. All of the Big Ben bulls are out of 1st-calf heifers. Carries on the Bluegrass lineage in our program.



EPD

	#		CE	BW	WW	YW	Milk	MCE	MTL	SC		#		CW	REA	FAT	MARB		TSI
HBWT	124	EPD	13.8	-3.6	29	56	4	13.1	18	2.0	PCW	8	EPD	11	0.26	-0.001	0.04	Index	203.35
PBWT	1191	Acc	0.86	0.92	0.88	0.86	0.76	0.73	0.80	0.78	PREA	8	Acc	0.42	0.43	0.39	0.39	%RK	55
DPROD	242	%RK	4	5	60	50	85	2	80	1	HULTRA		%RK	65	95	50	70		

EPDS 03-01-2020

FALL 2018 CHAROLAIS

71 LCC 8787 OF 4297 GS

Calved: 8/27/18 Reg#: EM924556 Tattoo: 8787

M6 NEW STANDARD 842 P ET

FINK GOLD STANDARD 0153

FINKS MISS 25503575BUDET

VPI FREE LUNCH 708T

MF MISS LADY 4297 6868 FL

MF MISS LADY 6868

CE	BW	WW	YW	Milk	SC	CW	REA	Marb	TSI
9.3	-1.1	36.1	72.4	5.1	1.3	34.4	0.58	0.393	224.84

Top %: 20 CE; 20 YW; 8 SC; 4 CW; 1 Marb; 7 TSI

There is only one fall-born bull in the Charolais but a pretty decent one!! This bull got bunged up a little before last Fall's sale and we had to drop him out. He's ready now. Family of low birth, high growth, ribeye and high marbling.



At right, our student worker, Jenna Hlavaty, and Kaylie Campbell, both students at Kansas State, attended a trip to Mexico in January, as Galen judged the Charolais show in Andreas, Mexico. Also pictured, Isaac and Sol Gomez and family.



During the trip to Mexico, the group toured a tequila plant, shown above right, barrels of tequila; and at left, the fermenting process.



Jenna got a ring stuck on her finger in a store in Mexico, Kaylie enjoying the soap getting it off!



Tequila bulbs headed to the cooker.

SPRING 2019 CHAROLAIS

72 FINK 932 OF 4279 GS

Calved: 2/10/19 Reg#: EM931923 Tattoo: 932

M6 NEW STANDARD 842 P ET

FINK GOLD STANDARD 0153

FINKS MISS 25503575BUDET

M6 NEW STANDARD 842 P ET

FINK PRIDE 4279 0389 NS

FINK PRIDE 0389 6871 2250

CE	BW	WW	YW	Milk	SC	CW	REA	Marb	TSI
9.3	-1.1	36.1	72.4	5.1	1.3	34.4	0.58	0.393	224.84

Top %: 8 WW; 7 YW; 1 CW; 3 Marb; 8 TSI

Full brothers: 932, 931, 930, 928

73 FINK 931 OF 4279 GS

Calved: 2/9/19 Reg#: EM931922 Tattoo: 931

M6 NEW STANDARD 842 P ET

FINK GOLD STANDARD 0153

FINKS MISS 25503575BUDET

M6 NEW STANDARD 842 P ET

FINK PRIDE 4279 0389 NS

FINK PRIDE 0389 6871 2250

CE	BW	WW	YW	Milk	SC	CW	REA	Marb	TSI
7.5	-0.1	39.9	86.6	11.7	1.3	34.3	0.74	0.203	236.86

Top %: 15 WW; 3 YW; 4 CW; 10 Marb; 2 TSI

Full brothers: 932, 931, 930, 928

74 FINK 930 OF 4279 GS

Horned

Calved: 2/9/19 Reg#: EM931921 Tattoo: 930

M6 NEW STANDARD 842 P ET

FINK GOLD STANDARD 0153

FINKS MISS 25503575BUDET

M6 NEW STANDARD 842 P ET

FINK PRIDE 4279 0389 NS

FINK PRIDE 0389 6871 2250

CE	BW	WW	YW	Milk	SC	CW	REA	Marb	TSI
7.3	0.2	34.9	71.9	14.9	0.8	33.4	0.72	0.259	222.28

Top %: 20 YW; 5 CW; 3 Marb; 10 TSI

Full brothers: 932, 931, 930, 928

75 FINK 928 OF 4279 GS

Calved: 2/3/19 Reg#: EM931920 Tattoo: 928

M6 NEW STANDARD 842 P ET

FINK GOLD STANDARD 0153

FINKS MISS 25503575BUDET

M6 NEW STANDARD 842 P ET

FINK PRIDE 4279 0389 NS

FINK PRIDE 0389 6871 2250

CE	BW	WW	YW	Milk	SC	CW	REA	Marb	TSI
9.8	-0.2	48.8	98.1	13.8	1	44.7	0.79	0.196	244.68

Top %: 3 WW; 1 YW; 1 CW; 15 Marb; 1 TSI

Brothers out of a tremendous New Standard dam. Great growth proven with high accuracy, along with excellent ribeye and cw! Free 50#+ or more on most cows at weaning, regardless of breed. High sellers in video markets are Charolais smokies and tan steers!

SPRING 2019 CHAROLAIS

76 FINK 927 OF 5763 GS
 Calved: 2/10/19 Reg#: EM931954 Tattoo: 927
 M6 NEW STANDARD 842 P ET
 FINK GOLD STANDARD 0153
 FINKS MISS 25503575BUDET
 VPI FREE LUNCH 708T
 FINK KISSES 5763 3823 FL
 MF KISSES 3823 9725 GS

CE	BW	WW	YW	Milk	SC	CW	REA	Marb	TSI
8.5	-0.7	42.8	83.4	5.7	1.4	39	0.7	0.173	228.91

Top %: 9 WW; 5 YW; 2 CW; 10 Marb; 4 TSI
 Full brothers: 927, 925, 926

77 FINK 925 OF 5763 GS
 Calved: 2/1/19 Reg#: EM931953 Tattoo: 925
 M6 NEW STANDARD 842 P ET
 FINK GOLD STANDARD 0153
 FINKS MISS 25503575BUDET
 VPI FREE LUNCH 708T
 FINK KISSES 5763 3823 FL
 MF KISSES 3823 9725 GS

CE	BW	WW	YW	Milk	SC	CW	REA	Marb	TSI
8.5	-1.2	34.1	68.1	9	1.2	33.2	0.53	0.225	216.44

Top %: 25 YW; 5 CW; 6 Marb; 20 TSI
 Full brothers: 927, 925, 926

78 FINK 926 OF 5763 GS
 Calved: 2/7/19 Reg#: EM931952 Tattoo: 926
 M6 NEW STANDARD 842 P ET
 FINK GOLD STANDARD 0153
 FINKS MISS 25503575BUDET
 VPI FREE LUNCH 708T
 FINK KISSES 5763 3823 FL
 MF KISSES 3823 9725 GS

CE	BW	WW	YW	Milk	SC	CW	REA	Marb	TSI
7.8	-1.1	36.6	70.9	5	1.4	33.1	0.48	0.242	217.7

Top %: 20 YW; 5 CW; 5 Marb; 20 TSI
 Full brothers someone may like! Moderate-framed, muscle-bound with excellent growth and outstanding carcass. Note bone shape is flat and no big joints on Fink Charolais. Calving ease!! TSI rank very high in the breed, bull after bull. Make a note to look up 927.

79 FINK 944 OF 3864 GS
 Calved: 2/6/19 Reg#: M931933 Tattoo: 944
 M6 NEW STANDARD 842 P ET
 FINK GOLD STANDARD 0153
 FINKS MISS 25503575BUDET
 VPI FREE LUNCH 708T
 FINK LADY 3864 1242 FL
 FINK LADY 1242 9521 2250

CE	BW	WW	YW	Milk	SC	CW	REA	Marb	TSI
2.3	2.3	51.7	104.4	7.5	1.2	45.1	0.77	0.188	247.48

Top %: 1 WW; 1 YW; 1 CW; 15 Marb; 1 TSI
 Outstanding bull with the look and numbers both. Typical Gold Standard, Free Lunch cross that has worked pretty well for hundreds of customers. Decent bull here!

80 FINK 942 OF 2686 GS **Horned**
 Calved: 2/22/19 Reg#: M931931 Tattoo: 942
 M6 NEW STANDARD 842 P ET
 FINK GOLD STANDARD 0153
 FINKS MISS 25503575BUDET
 VPI FREE LUNCH 708T
 FINK LADY 2686 8878 FL
 FINK LADY 8878 4952 GMP

CE	BW	WW	YW	Milk	SC	CW	REA	Marb	TSI
9.3	-0.6	38.3	79.1	17.2	1.2	35	0.52	0.218	226.49

Top %: 8 YW; 4 CW; 7 Marb; 6 TSI
 Gold Standard, Free Lunch, Gridmaker line-up is pretty dependable. All proven genetics and combines some of the best growth, carcass in the breed in bulls that calve easy.

81 FINK 933 OF 5785 GS
 Calved: 2/7/19 Reg#: EM931924 Tattoo: 933
 M6 NEW STANDARD 842 P ET
 FINK GOLD STANDARD 0153
 FINKS MISS 25503575BUDET
 VPI FREE LUNCH 708T
 FINK MISS 5785 9635 FL
 FINK MISS 9635 5651 GM

CE	BW	WW	YW	Milk	SC	CW	REA	Marb	TSI
11.5	-2.7	38.6	77	6.6	1.2	33.5	0.58	0.286	228.79

Top %: 20 WW; 10 YW; 5 CW; 2 Marb; 4 TSI
 Talk about a bull to change a set of calves! Turn out your maternal bulls to get replacements then use white bulls to gather up pounds. Keep maternal side in profit with maternal genetics, and terminal side in profit with pounds, and carcass weight and quality.

82 FINK 936 OF 1185 GS
 Calved: 2/8/19 Reg#: EM931927 Tattoo: 936
 M6 NEW STANDARD 842 P ET
 FINK GOLD STANDARD 0153
 FINKS MISS 25503575BUDET
 FINKS 2250 OF 3575D040ET
 FINK PERFECTION 1185 7738 2250
 FINK PERFECTION 7738 248 GM ET

CE	BW	WW	YW	Milk	SC	CW	REA	Marb	TSI
5	1.4	53.7	95.2	7.4	1.3	41.2	0.83	0.228	239.04

Top %: 1 WW; 1 YW; 1 CW; 20 RE; 6 Marb; 1 TSI
 Want high-grading cattle with less yield grade discounts — with less fat that cost time & money to put on? Try feeding this bull's calves off a set of British cows—see how many choice you can get.

83 FINK 939 OF 5532 GS
 Calved: 2/12/19 Reg#: EM931928 Tattoo: 939
 M6 NEW STANDARD 842 P ET
 FINK GOLD STANDARD 0153
 FINKS MISS 25503575BUDET
 FINK GOLD STANDARD 0153
 FINK PERFECTION 5532 1185 GS
 FINK PERFECTION 1185 7738 2250

CE	BW	WW	YW	Milk	SC	CW	REA	Marb	TSI
5	1.3	49.6	98.2	8.2	0.7	39.8	0.91	0.137	243.31

Top %: 2 WW; 1 YW; 1 CW; 7 RE; 1 TSI
 Double-bred Gold Standard! Actually line-bred for 3 generations! On a terminal sire that works really well as there will be no guesswork to how the cattle will perform. Never tried a Charolais bull, but considering it? We will give you references anytime.

SPRING 2019 CHAROLAIS

84 FINK 969 OF 5804 GS

Calved: 3/5/19 Reg#: EM931944 Tattoo: 969
 M6 NEW STANDARD 842 P ET
 FINK GOLD STANDARD 0153
 FINKS MISS 25503575BUDET
 FINK GOLD STANDARD 0153
 FINK LADY 5804 9521 GS
 FINK LADY 9521 6815 GM

CE	BW	WW	YW	Milk	SC	CW	REA	Marb	TSI
3.9	2.2	48.3	89.4	5.8	1.6	39.6	0.7	0.198	232.65

Top %: 3 WW; 2 YW; 1 CW; 15 Marb; 3 TSI

We had a group of ET bulls that came in lighter this year due to weather. I will make note of these because many were 100 to 200 lighter at weaning, but same genetics as other bulls in sale. EPDs will tell the story. They won't be as big sale day, but same genetics!



Some weaned calves at Bobby Joe Fullford Ranch, Florida.

85 FINK 961 OF 3834 GS

Calved: 3/9/19 Reg#: EM931939 Tattoo: 961
 M6 NEW STANDARD 842 P ET
 FINK GOLD STANDARD 0153
 FINKS MISS 25503575BUDET
 VPI FREE LUNCH 708T
 FINK PERFECTION 3834 7738 FL
 FINK PERFECTION 7738 248 GM ET

CE	BW	WW	YW	Milk	SC	CW	REA	Marb	TSI
4.7	1.7	49.5	90.4	5.8	1.5	33.2	0.79	0.248	235.38

Top %: 2 WW; 2 YW; 5 CW; 25 RE; 4 Marb; 2 TSI

Full brothers: 961, 959, 960, 962, 958, 963

88 FINK 962 OF 3834 GS

Calved: 3/10/19 Reg#: EM931940 Tattoo: 962
 M6 NEW STANDARD 842 P ET
 FINK GOLD STANDARD 0153
 FINKS MISS 25503575BUDET
 VPI FREE LUNCH 708T
 FINK PERFECTION 3834 7738 FL
 FINK PERFECTION 7738 248 GM ET

23rd

CE	BW	WW	YW	Milk	SC	CW	REA	Marb	TSI
7.5	-0.1	40.1	76.3	1.8	1.2	33.6	0.75	0.36	227.3

Top %: 15 WW; 15 YW; 5 CW; 35 RE; 1 Marb; 5 TSI

Full brothers: 961, 959, 960, 962, 958, 963

86 FINK 959 OF 3834 GS

Calved: 3/9/19 Reg#: EM931937 Tattoo: 959
 M6 NEW STANDARD 842 P ET
 FINK GOLD STANDARD 0153
 FINKS MISS 25503575BUDET
 VPI FREE LUNCH 708T
 FINK PERFECTION 3834 7738 FL
 FINK PERFECTION 7738 248 GM ET

46th

CE	BW	WW	YW	Milk	SC	CW	REA	Marb	TSI
6.2	0.9	43.7	84.7	5.3	1.4	34.6	0.71	0.338	234.12

Top %: 8 WW; 4 YW; 4 CW; 1 Marb; 2 TSI

Full brothers: 961, 959, 960, 962, 958, 963

89 FINK 958 OF 3834 GS

Calved: 3/14/19 Reg#: EM931936 Tattoo: 958
 M6 NEW STANDARD 842 P ET
 FINK GOLD STANDARD 0153
 FINKS MISS 25503575BUDET
 VPI FREE LUNCH 708T
 FINK PERFECTION 3834 7738 FL
 FINK PERFECTION 7738 248 GM ET

58th

CE	BW	WW	YW	Milk	SC	CW	REA	Marb	TSI
8.4	-0.1	33.8	67.4	12.9	1.3	31.5	0.77	0.328	219.67

Top %: 8 CW; 30 RE; 1 Marb; 15 TSI

Full brothers: 961, 959, 960, 962, 958, 963

87 FINK 960 OF 3834 GS

Calved: 3/16/19 Reg#: EM931938 Tattoo: 960
 M6 NEW STANDARD 842 P ET
 FINK GOLD STANDARD 0153
 FINKS MISS 25503575BUDET
 VPI FREE LUNCH 708T
 FINK PERFECTION 3834 7738 FL
 FINK PERFECTION 7738 248 GM ET

Scurs

78th

CE	BW	WW	YW	Milk	SC	CW	REA	Marb	TSI
8.6	0.2	49.6	93.5	5.1	1.9	42.9	0.92	0.311	242.74

Top %: 2 WW; 2 YW; 1 CW; 7 RE; 2 Marb; 1 TSI

Full brothers: 961, 959, 960, 962, 958, 963

90 FINK 963 OF 3834 GS

Calved: 3/10/19 Reg#: EM931941 Tattoo: 963
 M6 NEW STANDARD 842 P ET
 FINK GOLD STANDARD 0153
 FINKS MISS 25503575BUDET
 VPI FREE LUNCH 708T
 FINK PERFECTION 3834 7738 FL
 FINK PERFECTION 7738 248 GM ET

17th

CE	BW	WW	YW	Milk	SC	CW	REA	Marb	TSI
7.6	0.6	36	66.5	9.7	1.4	30.7	0.75	0.37	217.52

Top %: 9 CW; 1 Marb; 20 TSI

Full brothers that are all a touch behind due to environment. In a few months, there won't be much difference. **This is a power set of bulls.** Look at how they are made! We have sold 19 brothers to these in the past 3 sales from \$3,750 to \$9,000 averaging over \$6,500 on them!

SPRING 2019 CHAROLAIS

91 FINK 945 OF 425 GS
 Calved: 2/18/19 Reg#: M931934 Tattoo: 945
 M6 NEW STANDARD 842 P ET
 FINK GOLD STANDARD 0153
 FINKS MISS 25503575BUDET
 VPI FREE LUNCH 708T
 FINK LADY 425 4945 FL
 FINKS LADY 4945 2286 9108

CE	BW	WW	YW	Milk	SC	CW	REA	Marb	TSI
9.8	-1.5	34.3	65.5	11.4	1.1	32.8	0.6	0.12	211.81

Top %: 6 CW; 30 TSI
 Could be a female-maker here also. If we ran a commercial herd, it would be 1/2 Charolais—1/2 Angus/Red Angus. They work. Fertile, muscle, easy-keeping. Ask some folks that have them!

92 FINK 935 OF 5780 GS
 Calved: 2/9/19 Reg#: EM931926 Tattoo: 935
 M6 NEW STANDARD 842 P ET
 FINK GOLD STANDARD 0153
 FINKS MISS 25503575BUDET
 VPI FREE LUNCH 708T
 FINK MEGAN 5780 1124 FL
 FINK MEGAN 1124 7750 BG

CE	BW	WW	YW	Milk	SC	CW	REA	Marb	TSI
5.8	1.2	39.5	74.8	5.8	1.1	34.3	0.72	0.104	217

Top %: 20 WW; 15 YW; 4 CW; 20 TSI
 Full brothers: 935 and 934

93 FINK 934 OF 5780 GS
 Calved: 2/7/19 Reg#: EM931925 Tattoo: 934
 M6 NEW STANDARD 842 P ET
 FINK GOLD STANDARD 0153
 FINKS MISS 25503575BUDET
 VPI FREE LUNCH 708T
 FINK MEGAN 5780 1124 FL
 FINK MEGAN 1124 7750 BG

CE	BW	WW	YW	Milk	SC	CW	REA	Marb	TSI
10.4	-0.7	25.3	47.3	1.9	1	24.6	0.55	0.233	195.99

Top %: 30 CW; 6 Marb
 Full brothers out of a high-marbling cow family. Nice pair of bulls if you want to test white bulls for the first time, or if you want extra pounds with no 4s!

94 FINK 943 OF 3844 GS **Horned**
 Calved: 2/2/19 Reg#: M931932 Tattoo: 943
 M6 NEW STANDARD 842 P ET
 FINK GOLD STANDARD 0153
 FINKS MISS 25503575BUDET
 LT UNLIMITED EASE 9108
 FINK MS GRADE NOW3844 953 9108
 M6 MS GRADE NOW 953 P ET

CE	BW	WW	YW	Milk	SC	CW	REA	Marb	TSI
15	-2.4	32.3	68.8	17.1	1	26.7	0.88	0.149	221.29

Top %: 1 CE; 10 BW; 25 YW; 20 CW; 15 TSI
 Solid bull here—could be another of those bulls used to make replacements also. Dam is nice-uddered and Gold Standard leaves nice daughters. And don't forget probably sell an extra 50# of weaning weight off the steers!

95 LCC 938 OF 5778 GS
 Calved: 2/14/19 Reg#: EM931956 Tattoo: 938
 M6 NEW STANDARD 842 P ET
 FINK GOLD STANDARD 0153
 FINKS MISS 25503575BUDET
 VPI FREE LUNCH 708T
 MF MISS LADY 5778 023 FL
 MF MISS LADY 023 BG

51st

CE	BW	WW	YW	Milk	SC	CW	REA	Marb	TSI
2.4	1.2	43.4	79.5	6.1	1.2	37.2	0.75	0.335	226.86

Top %: 8 WW; 8 YW; 20 CW; 35 RE; 1 Marb; 6 TSI
 Full Brothers: 938 and 937.

96 LCC 937 OF 5778 GS
 Calved: 2/11/19 Reg#: EM931955 Tattoo: 937
 M6 NEW STANDARD 842 P ET
 FINK GOLD STANDARD 0153
 FINKS MISS 25503575BUDET
 VPI FREE LUNCH 708T
 MF MISS LADY 5778 023 FL
 MF MISS LADY 023 BG

28th

CE	BW	WW	YW	Milk	SC	CW	REA	Marb	TSI
7.5	0.8	44.8	85.1	5.4	1.2	42	0.8	0.35	232.98

Top %: 6 WW; 4 YW; 1 CW; 25 RE; 1 Marb; 3 TSI
 Extremely high-marbling Gold Standard sons. Low birth, great growth, outstanding carcass. The dam of these bulls is one of the highest marbling cows in the breed.

97 BARRETT 965 4329 GS
 Calved: 3/5/19 Reg#: EM932367 Tattoo: 965
 M6 NEW STANDARD 842 P ET
 FINK GOLD STANDARD 0153
 FINKS MISS 25503575BUDET
 VPI FREE LUNCH 708T
 FINK MEGAN 4329 1208 FL
 FINK MEGAN 1208 5790 ND

CE	BW	WW	YW	Milk	SC	CW	REA	Marb	TSI
7.3	-0.25	39.65	72.9	6.9	1.25	34.25	0.59	0.263	219.73

Top %: 20 WW; 15 YW; 4 CW; 3 Marb; 15 TSI
 Nice bull with great proven EPDs. He is behind some due to environment. That will **NOT** change what his calves can do. He ranks high for TSI, which means he'll add pounds, carcass to a set of calves. Won't change how many cows he can breed this spring either.

98 LCC 9008 OF 5789 GS
 Calved: 2/21/19 Reg#: M932267 Tattoo: 9008
 M6 NEW STANDARD 842 P ET
 FINK GOLD STANDARD 0153
 FINKS MISS 25503575BUDET
 LT LEDGER 0332 P
 HS KISSES 5789 LD
 MF KISSES 1138 ND

CE	BW	WW	YW	Milk	SC	CW	REA	Marb	TSI
6.975	0.1	36.7	73.37	5.25	1.05	31.86	0.796	0.150	220.02

Top %: 15 YW; 7 CW; 25 RE; 25 Marb; 15 TSI
 Nice-made bull that is behind—won't change his genetic ability. He will grow. We don't fatten our bulls for max weight at sale time. We would rather brag that your bull lasted 2 to 3 years longer for you! Put him with 20 to 25 cows this spring.

SPRING 2019 CHAROLAIS

99 LCC 953 OF 3827 GS Scurs
 Calved: 3/10/19 Reg#: EM931960 Tattoo: 953
 M6 NEW STANDARD 842 P ET
 FINK GOLD STANDARD 0153
 FINKS MISS 25503575BUDET
 VPI FREE LUNCH 708T
 MF MISS LADY 3827 6868 FL
 MF MISS LADY 6868

CE	BW	WW	YW	Milk	SC	CW	REA	Marb	TSI
9.1	-0.1	44.1	83.1	5.5	1.5	43.3	0.75	0.255	230.07

Top %: 7 WW; 8 YW; 1 CW; 4 Marb; 4 TSI
 Full brothers: 953 and 955

100 LCC 955 OF 3827 GS
 Calved: 3/7/19 Reg#: EM931962 Tattoo: 955
 M6 NEW STANDARD 842 P ET
 FINK GOLD STANDARD 0153
 FINKS MISS 25503575BUDET
 VPI FREE LUNCH 708T
 MF MISS LADY 3827 6868 FL
 MF MISS LADY 6868

CE	BW	WW	YW	Milk	SC	CW	REA	Marb	TSI
7.4	0.4	36	76.2	8.7	1.1	35.7	0.77	0.228	225.56

Top %: 15 YW; 3 CW; 6 Marb; 7 TSI
 Two full brothers that are also behind some, weight-wise; but they will breed a lot of cows this spring! Don't worry about that! Note marbling here, growth, carcass and TSI. May want to watch these bulls.

101 FINK 941 OF 426 GS
 Calved: 2/4/19 Reg#: M931930 Tattoo: 941
 M6 NEW STANDARD 842 P ET
 FINK GOLD STANDARD 0153
 FINKS MISS 25503575BUDET
 VPI FREE LUNCH 708T
 FINK LADY 426 4945 FL
 FINKS LADY 4945 2286 9108

CE	BW	WW	YW	Milk	SC	CW	REA	Marb	TSI
9.4	-0.75	33.6	63.2	10.6	1.15	31.6	0.61	0.218	211.01

Top %: 7 CW; 7 Marb; 30 TSI
 Another bull that could make some really nice replacements. Yes, we can give you plenty of references for Charolais-cross females also.

102 FINK 940 OF 4289 GS
 Calved: 2/9/19 Reg#: M931929 Tattoo: 940
 M6 NEW STANDARD 842 P ET
 FINK GOLD STANDARD 0153
 FINKS MISS 25503575BUDET
 LT RIO BRAVO 3181 P
 FINK LADY 4289 4952 RB
 FINKS LADY 4952 2528 9108

CE	BW	WW	YW	Milk	SC	CW	REA	Marb	TSI
11.5	-2.5	24.3	53.3	11.9	0.8	22.7	0.57	0.226	205.8

Top %: 6 Marb
 Nice Gold Standard that can sire a nice group of feeder steers and heifers. Hybred vigor is real.

103 LCC 923 OF 6868 FL
 Calved: 2/8/19 Reg#: EM931950 Tattoo: 923
 LT RIO BLANCO 1234 P
 VPI FREE LUNCH 708T
 VPI MISS DUCHESS 404 P
 M6 GAIN & GRADE 927 PLD
 MF MISS LADY 6868
 FINKS LADY 1867 4X6BUDET

CE	BW	WW	YW	Milk	SC	CW	REA	Marb	TSI
7.1	-0.7	38.1	67.2	2.9	1.6	33	0.45	0.495	218.58

1st

Top %: 25 WW; 25 YW; 5 CW; 1 Marb; 15 TSI
 Full brothers: 923, 922, 921, 924

104 LCC 922 OF 6868 FL
 Calved: 2/4/19 Reg#: EM931949 Tattoo: 922
 LT RIO BLANCO 1234 P
 VPI FREE LUNCH 708T
 VPI MISS DUCHESS 404 P
 M6 GAIN & GRADE 927 PLD
 MF MISS LADY 6868
 FINKS LADY 1867 4X6BUDET

CE	BW	WW	YW	Milk	SC	CW	REA	Marb	TSI
9	-1.6	35.3	67.5	-4.9	2	29.6	0.42	0.384	218.7

13th

Top %: 25 YW; 15 CW; 1 Marb; 15 TSI
 Full brothers: 923, 922, 921, 924

105 LCC 921 OF 6868 FL
 Calved: 2/3/19 Reg#: EM931948 Tattoo: 921
 LT RIO BLANCO 1234 P
 VPI FREE LUNCH 708T
 VPI MISS DUCHESS 404 P
 M6 GAIN & GRADE 927 PLD
 MF MISS LADY 6868
 FINKS LADY 1867 4X6BUDET

CE	BW	WW	YW	Milk	SC	CW	REA	Marb	TSI
14.8	-4.1	33.7	64.1	1.5	1.8	28.5	0.32	0.427	218.3

7th

Top %: 15 CW; 1 Marb; 15 TSI
 Full brothers: 923, 922, 921, 924

106 LCC 924 OF 6868 FL
 Calved: 2/8/19 Reg#: EM931951 Tattoo: 924
 LT RIO BLANCO 1234 P
 VPI FREE LUNCH 708T
 VPI MISS DUCHESS 404 P
 M6 GAIN & GRADE 927 PLD
 MF MISS LADY 6868
 FINKS LADY 1867 4X6BUDET

CE	BW	WW	YW	Milk	SC	CW	REA	Marb	TSI
6.5	0.6	36.3	67.7	-0.1	1.6	28.8	0.41	0.475	218.79

2nd

Top %: 25 YW; 15 CW; 1 Marb; 15 TSI
 Brothers out of Megan's 6868 female that has created the most consistently highest marbling cow family in the entire breed. Herself, daughters, granddaughters, and now great-granddaughters continue to be the largest marbling group in the U.S. These will probably be the last sons of 6868 ever. At 14, her flushing ability is almost over. Take a look at the length, muscle, power and pounds in this group.

SPRING 2019 CHAROLAIS

107 FINK 970 OF 5805 FL

Calved: 3/7/19 Reg#: EM931945 Tattoo: 970
 LT RIO BLANCO 1234 P
 VPI FREE LUNCH 708T
 VPI MISS DUCHESS 404 P
 FINK GOLD STANDARD 0153
 FINK LADY 5805 9521 GS
 FINK LADY 9521 6815 GM

CE	BW	WW	YW	Milk	SC	CW	REA	Marb	TSI
5.8	0.7	44.9	78.4	7.2	1.5	36	0.63	0.226	221.46

Top %: 6 WW; 8 YW; 3 CW; 6 Marb; 15 TSI
 Look this bull up—behind some due to environment, but he will breed as many cows this spring as any. His dam is a power female. This bull's EPDs are on target.

111 LCC 950 OF 2675 FL

Calved: 3/5/19 Reg#: EM931957 Tattoo: 950
 LT RIO BLANCO 1234 P
 VPI FREE LUNCH 708T
 VPI MISS DUCHESS 404 P
 M6 GRID MAKER 104 PET
 MF MISS LADY 2675 6868 GM
 MF MISS LADY 6868

3rd

CE	BW	WW	YW	Milk	SC	CW	REA	Marb	TSI
4.3	0.2	38.3	67.7	1	1.4	34.1	0.54	0.457	217.58

Top %: 20 WW; 25 YW; 4 CW; 1 Marb; 20 TSI
 Environment again — but won't change how many cows he can breed this spring. Nor will it change his calves' ability to grow. This is a perfect bull to get your feet wet with a white bull.

108 LCC 967 OF 3825 FL

Calved: 3/7/19 Reg#: EM931965 Tattoo: 967
 LT RIO BLANCO 1234 P
 VPI FREE LUNCH 708T
 VPI MISS DUCHESS 404 P
 M6 GRID MAKER 104 PET
 MF KISSES 3825 7701 GM
 MF KISSES 7701 SP

CE	BW	WW	YW	Milk	SC	CW	REA	Marb	TSI
2.1	1.3	34.5	66.3	5.1	1.2	27.2	0.76	0.26	214.36

Top %: 20 CW; 3 Marb; 25 TSI
 Full brothers: 967, 952, 951

112 FINK 948 OF 0369 FL

Calved: 3/9/19 Reg#: EM931935 Tattoo: 948
 LT RIO BLANCO 1234 P
 VPI FREE LUNCH 708T
 VPI MISS DUCHESS 404 P
 LT BLUEGRASS 4017 P
 FINK MISS 0369 8848 BG
 FINK MISS 8848 4851 GM

16th

CE	BW	WW	YW	Milk	SC	CW	REA	Marb	TSI
7.2	-1.3	18.7	42.2	9.7	1.5	9.1	0.44	0.37	197.08

Top %: 1 Marb
 Complete-made bull. EPDs are very good also. Loaded with marbling, good TSI. Four generations of some of the highest-marbling bulls in the breed.

109 LCC 952 OF 3825 FL

Calved: 3/7/19 Reg#: EM931959 Tattoo: 952
 LT RIO BLANCO 1234 P
 VPI FREE LUNCH 708T
 VPI MISS DUCHESS 404 P
 M6 GRID MAKER 104 PET
 MF KISSES 3825 7701 GM
 MF KISSES 7701 SP

CE	BW	WW	YW	Milk	SC	CW	REA	Marb	TSI
4.2	1	38.1	69.1	0.8	1.5	28.2	0.69	0.22	214.31

Top %: 25 WW; 25 YW; 15 CW; 7 Marb; 25 TSI
 Full brothers: 967, 952, 951

113 FINK 966 OF 3844 FL

Calved: 2/22/19 Reg#: EM931942 Tattoo: 966
 LT RIO BLANCO 1234 P
 VPI FREE LUNCH 708T
 VPI MISS DUCHESS 404 P
 LT UNLIMITED EASE 9108
 FINK MS GRADE NOW3844 953 9108
 M6 MS GRADE NOW 953 P ET

24th

CE	BW	WW	YW	Milk	SC	CW	REA	Marb	TSI
8	-1	37.5	64.1	9.1	1.7	27.4	0.47	0.358	211.67

Top %: 25 WW; 20 CW; 1 Marb; 30 TSI
 Nice-made ET bull that is catching up due to environment. Not his fault and won't change his mature growth or his calves' ability to grow and grade. Cowboys pay attention here!

110 LCC 951 OF 3825 FL

Calved: 3/1/19 Reg#: EM931958 Tattoo: 951
 LT RIO BLANCO 1234 P
 VPI FREE LUNCH 708T
 VPI MISS DUCHESS 404 P
 M6 GRID MAKER 104 PET
 MF KISSES 3825 7701 GM
 MF KISSES 7701 SP

Scurs

CE	BW	WW	YW	Milk	SC	CW	REA	Marb	TSI
8.6	-0.2	33.4	62.9	2.1	1.5	25.9	0.7	0.251	212.03

Top %: 25 CW; 4 Marb; 30 TSI
 Brothers again with growth, marbling, low birth. Solid genetics that should work great on any set of cows, regardless of breed. Buyers know Charolais cross by the color—ask any feedlot or packer how they like the cross!



Andy Stubbs, Alpine, Texas, yes, he's a character—and a good friend and long-time customer.



Famed Auctioneer, Ethan Schutte!

SPRING 2019 CHAROLAIS

114 FINK 978 OF 2693 BB

Calved: 1/30/19 Reg#: EM932562 Tattoo: 978

LT BLUEGRASS 4017 P

WC BIG BEN 9036 P

VCRMISDUCHESS9506POLLED

LT RIO BRAVO 3181 P

FINK PERFECTION 2693 7738 RB

FINK PERFECTION 7738 248 GM ET

CE	BW	WW	YW	Milk	SC	CW	REA	Marb	TSI
8.5	-0.4	43	81.1	8.8	1.8	33.6	0.93	0.177	228.06

Top %: 9 WW; 6 YW; 5 CW; 6 RE; 20 Marb; 5 TSI
Full brothers: 978 and 977

115 FINK 977 OF 2693 BB

Calved: 1/29/19 Reg#: EM931946 Tattoo: 977

LT BLUEGRASS 4017 P

WC BIG BEN 9036 P

VCRMISDUCHESS9506POLLED

LT RIO BRAVO 3181 P

FINK PERFECTION 2693 7738 RB

FINK PERFECTION 7738 248 GM ET

CE	BW	WW	YW	Milk	SC	CW	REA	Marb	TSI
8.9	-1.6	32.5	56	9.2	1.9	22.1	0.64	0.22	204.66

Top %: 7 Marb
Difference in recipient dams will show up in these 2 full brothers. Someone will make a buy on 977!! All entirely due to his weaning weight. Won't change his genetics! Dam is same family as New Standard and Gold Standard.

116 FINK 979 OF 2694 BB

Calved: 2/4/19 Reg#: EM932563 Tattoo: 979

LT BLUEGRASS 4017 P

WC BIG BEN 9036 P

VCRMISDUCHESS9506POLLED

LT RIO BRAVO 3181 P

FINK PERFECTION 2694 7738 RB

FINK PERFECTION 7738 248 GM ET

CE	BW	WW	YW	Milk	SC	CW	REA	Marb	TSI
5.6	1	33.6	61.5	9.8	1.5	25.9	0.61	0.224	207.5

Top %: 7 Marb
Big Ben is a featured sire at ABS. Low birthweight with adequate growth. The dam of this bull is a full sister in blood to New Standard!!



Champion Bull, Charolais Show, Andreas, Mexico, January 2020

CHAROLAIS COMPOSITES

117 FINK 8835 OF 6339 REBEL

Calved: 10/8/18 Tattoo: 8835

SCHULER REBEL 0029X

FINK GOLD STANDARD 0153

LCC MISS LADY 6339 6868 GS

MF MISS LADY 6868

Dam ranking: Top 3% WW; 2% YW; 2% SC; 1% CWT; 1% Marb; 1% TSI

Red Angus x Charolais. Nice bull—too young to sell last fall. Rebel is a low birth, good growth, higher marbling sire that leaves nice females. Older and proven.

118 FINK 972 OF 5532 CAP

Calved: 2/13/19 Tattoo: 972

CONNEALY CAPITALIST 028

AAA reg#: 16752262

FINK GOLD STANDARD 0153

FINK PERFECTION 5532 1185 GS

FINK PERFECTION 1185 7738 2250

Full brothers: 972 and 973

119 FINK 973 OF 5532 CAP

Calved: 2/14/19 Tattoo: 973

CONNEALY CAPITALIST 028

AAA reg#: 16752262

FINK GOLD STANDARD 0153

FINK PERFECTION 5532 1185 GS

FINK PERFECTION 1185 7738 2250

Dam ranking: Top 8% WW; 4% YW; 8% CWT; 25% RE; 20% Marb; 4% TSI

The sire of these 2 Black Angus x Charolais full brothers, Connealy Capitalist 028 is a time-tested Final Answer son that sires muscle, nice udders, enough carcass, and heifer pregnancy for replacements.

120 FINK 976 OF 5805 CAP

Calved: 3/7/19 Tattoo: 976

CONNEALY CAPITALIST 028

AAA reg#: 16752262

FINK GOLD STANDARD 0153

FINK LADY 5805 9521 GS

FINK LADY 9521 6815 GM

Dam ranking: Top 4% WW; 3% YW; 4% CWT; 25% RE; 3% TSI

Black Angus x Charolais composite bull.

ANGUS FEMALES

This is the first time in many years we have offered females at auction. We normally sell groups to private-treaty buyers when we have females available. This offering will consist of various calving ages, pairs, etc., to meet anyone's program. All of the Spring 2020-calving females were planned to calve in April and May so we could hold the bulls for 18-month-olds in our Fall 2021 bull sale. Plus, any cows we decided to flush would roll into our Fall donor program. They are not slow breeders. **Note:** If we weren't short of pasture, many of these females would not be selling.



BARRETT MISS 456 4004 RE. Full sib to Super Duty and Overdrive.

SPRING-CALVING FEMALES

121 FINK FORMERA 888 2231 OD

Calved: 2/22/18 Reg#: 19307837 Tattoo: 888
 S A V RESOURCE 1441
 BARRETT OVERDRIVE 4856
 BARRETT'S MISS 4004 2526 BAR
 S A V FINAL ANSWER 0035
 FINK FORMERA 2231 5557 FA
 FINK FORMERA 5557 3471 NBPT

CED	BW	WW	YW	DMI	SC	Doc	Milk
7	1.4	58	106	1.03	1.67	21	27
MW	\$EN	CW	Marb	RE	\$M	\$W	\$B
53	-16	35	.53	.60	59	63	119

Full sisters: 888 and 890.
 888 Due 5-11-20 to Cole Creek Cedar Ridge 1V.

122 FINK FORMERA 890 2231 OD

Calved: 3/2/18 Reg#: 19307838 Tattoo: 890
 S A V RESOURCE 1441
 BARRETT OVERDRIVE 4856
 BARRETT'S MISS 4004 2526 BAR
 S A V FINAL ANSWER 0035
 FINK FORMERA 2231 5557 FA
 FINK FORMERA 5557 3471 NBPT

CED	BW	WW	YW	DMI	SC	Doc	Milk
7	1.4	58	106	1.03	1.67	21	27
MW	\$EN	CW	Marb	RE	\$M	\$W	\$B
53	-16	35	.53	.60	59	63	119

Two super nice Overdrive daughters. The dam is a model female—her dam was a high-selling female at the former EBY Ranch. Moderation, udder quality, fleshing ability and carcass.
 890 Due 4-16-20 to Cole Creek Cedar Ridge 1V.

123 FINK FORMERA 891 2230 OD

Calved: 2/24/18 Reg#: 19307839 Tattoo: 891
 S A V RESOURCE 1441
 BARRETT OVERDRIVE 4856
 BARRETT'S MISS 4004 2526 BAR
 S A V FINAL ANSWER 0035
 FINK FORMERA 2230 5557 FA
 FINK FORMERA 5557 3471 NBPT

CED	BW	WW	YW	DMI	SC	Doc	Milk
7	1.8	51	92	.68	1.16	20	26
MW	\$EN	CW	Marb	RE	\$M	\$W	\$B
35	-7	29	.47	.51	61	55	111

Full sister in blood to 888 and 890, lots 121 and 122. Cow family that can be taken any direction desired. We have built it as a balanced EPD to produce maternal females.
 Due 5-12-20 to Cole Creek Cedar Ridge 1V.

124 FINK DONNA 894 4574 OD

Calved: 2/27/18 Reg#: 19307842 Tattoo: 894
 S A V RESOURCE 1441
 BARRETT OVERDRIVE 4856
 BARRETT'S MISS 4004 2526 BAR
 S A V FINAL ANSWER 0035
 FINK DONNA 4574 0765 FA
 FINK DONNA 0765 9140 5522

CED	BW	WW	YW	DMI	SC	Doc	Milk
2	2.2	63	109	.85	1.28	21	26
MW	\$EN	CW	Marb	RE	\$M	\$W	\$B
55	-16	38	.28	.54	57	66	113

High-longevity bulls wrapped up here. 5522 genetics known nationwide for profit-making cows. EPDs can be used for improvement or they can tear a cowherd apart easily. Dam of this female is at Frank Turner's, Alabama. Due 5-7-20 to Cole Creek Cedar Ridge 1V.

125 FINK MISS 882 233 WAVE

Calved: 2/9/18 Reg#: 19311952 Tattoo: 882
 GARDENS HIGHMARK
 GARDENS WAVE
 GREEN GARDEN LADY 6255 S2
 K C F BENNETT INDEX
 FINK MISS 233 8379 BI
 FINK MISS 8379 6535 IF

CED	BW	WW	YW	DMI	SC	Doc	Milk
7	1.0	44	77	.47	1.38	14	27
MW	\$EN	CW	Marb	RE	\$M	\$W	\$B
8	5	27	.87	.69	62	52	136

Full sisters: 882 and 883.
 882 Due 4-16-20 to Cole Creek Cedar Ridge 1V.

126 FINK MISS 883 233 WAVE

Calved: 2/9/18 Reg#: 19311953 Tattoo: 883
 GARDENS HIGHMARK
 GARDENS WAVE
 GREEN GARDEN LADY 6255 S2
 K C F BENNETT INDEX
 FINK MISS 233 8379 BI
 FINK MISS 8379 6535 IF

CED	BW	WW	YW	DMI	SC	Doc	Milk
7	1.0	44	77	.47	1.38	+14	27
MW	\$EN	CW	Marb	RE	\$M	\$W	\$B
8	5	27	.87	.69	62	52	64

Offering 2 daughters of Miss 233, one of, if not the most impressive Index daughters ever born. Donor for Renfros and Grecos. From the Miss family at Finks. Solid genetics, no extremes, for long-term profit. Wave daughters are few and far between...No bull in the breed offers 1.17 marb; +30 \$EN; -42 MW... none!!
 883 Due 4-13-20 to Cole Creek Cedar Ridge 1V.

SPRING-CALVING FEMALES

127 FINK BONNIE 887 3495 DASH

Calved: 2/8/18 Reg#: 19307836 Tattoo: 887
 SITZ UPWARD 307R
 SITZ DASH 10277
 SITZ EVERELDA ENTENSE 2665
 S A V FINAL ANSWER 0035
 FINK BONNIE 3495 522 FA
 FINKS BONNIE 522 0372 5522

CED	BW	WW	YW	DMI	SC	Doc	Milk
10	-0.1	52	89	0.57	0.66	23	20
MW	\$EN	CW	Marb	RE	\$M	\$W	\$B
24	2	23	0.45	0.31	71	55	99

Great female to continue calving ease bulls for the commercial cowman. Already 5 generations of calving ease lined up! This is what creates balance and predictability. Every bull in this cow and resulting calf is a COWMAKER! Due 4-18-20 to Cole Creek Cedar Ridge 1V.

128 FINK ERICA 879 2248 RCE

Calved: 2/5/18 Reg#: 19307833 Tattoo: 879
 RITO 707 OF IDEAL 3407 7075
 S A V RESOURCE 1441
 S A V BLACKCAP MAY 4136
 NICHOLS EXTRA K205
 FINK ERICA 2248 9380 K205
 FINK ERICA 9380 3463 5522

CED	BW	WW	YW	DMI	SC	Doc	Milk
4	2.5	62	112	1.55	0.84	25	25
MW	\$EN	CW	Marb	RE	\$M	\$W	\$B
61	-19	46	0.31	0.62	62	61	111

Full sisters: 879 and 878.
 879 Due 4-22-20 to SVR XXP Enchanted 5135.

129 FINK ERICA 878 2248 RCE

Calved: 2/7/18 Reg#: 19307832 Tattoo: 878
 RITO 707 OF IDEAL 3407 7075
 S A V RESOURCE 1441
 S A V BLACKCAP MAY 4136
 NICHOLS EXTRA K205
 FINK ERICA 2248 9380 K205
 FINK ERICA 9380 3463 5522

CED	BW	WW	YW	DMI	SC	Doc	Milk
4	2.5	62	112	1.55	0.84	25	25
MW	\$EN	CW	Marb	RE	\$M	\$W	\$B
61	-19	46	0.31	0.62	62	61	111

2 nice Resource daughters out of a double-bred Emulation Donna cow family. Erica 9380 was one of the nicest-made, good kind of 5522 daughters we ever owned. We don't breed our Angus for extremes—but for balanced, sound females. These both are bred to Enchanted, a loaded-up Emulation XXP son we purchased an interest in from Casey Quitmeyer in Nebraska.
 878 Due 5-10-20 to SVR XXP Enchanted 5135.



Caleb and Paul Lucas Ranch, Osteen, Florida. Fink Charolais bull.

130 FINK MISS 5397 1319 RCE

Calved: 9/4/15 Reg#: 18507406 Tattoo: 5397
 RITO 707 OF IDEAL 3407 7075
 S A V RESOURCE 1441
 S A V BLACKCAP MAY 4136
 K C F BENNETT INDEX
 FINK MISS 1319 9405 BI
 FINK MISS 9405 5523 NW

CED	BW	WW	YW	DMI	SC	Doc	Milk
1	3.9	59	114	1.59	1.45	15	30
MW	\$EN	CW	Marb	RE	\$M	\$W	\$B
55	-19	44	0.27	0.59	56	58	115

Outstanding Resource daughter—long, deep, thick, good-uddered and power, yet a cow. We have flushed this female several times. Back to the powerful Miss family that produced both the Denver National Western Grand Bull and Grand Female in 2015. This female can be taken any direction and will work.
 Due 4-15-20 to Sitz Wisdom 481T.



Lined up and ready to go!

FALL-BRED FEMALES

131 FINK MISS 5404 1603 FA

Calved: 8/31/15 Reg#: 18507410 Tattoo: 5404
 SITZ TRAVELER 8180
 S A V FINAL ANSWER 0035
 S A V EMULOUS 8145
 LEACHMAN RIGHT TIME
 BARRETTS MISS 1603 4168 RT
 FINKS MISS 4168 8130 5204

CED	BW	WW	YW	DMI	SC	Doc	Milk
10	-0.6	51	86	0.25	1	18	26
MW	\$EN	CW	Marb	RE	\$M	\$W	\$B
35	-7	33	0.23	0.22	60	60	105

Full sisters: 5404 and 5402
 5404 bred 12-26-19 to Basin Rainmaker 4404.

132 FINK MISS 5402 1603 FA

Calved: 8/31/15 Reg#: 18507409 Tattoo: 5402
 SITZ TRAVELER 8180
 S A V FINAL ANSWER 0035
 S A V EMULOUS 8145
 LEACHMAN RIGHT TIME
 BARRETTS MISS 1603 4168 RT
 FINKS MISS 4168 8130 5204

CED	BW	WW	YW	DMI	SC	Doc	Milk
11	-0.7	46	80	0.21	0.9	16	25
MW	\$EN	CW	Marb	RE	\$M	\$W	\$B
29	-3	27	0.27	0.2	57	50	100

Young Final Answers out of the Miss family at Finks. The grandam, 4168, generated over \$500,000 in revenue directly for us. 8130 is the Northern Miss foundation cow family for Damerons in IL. Many Denver winners are from 8130!! These 2 cows are the results of embryos we bought from Ron Vohs. Both have been flushed at Finks. 5402 bred 1-3-20 to Barrett Overdrive 4856.

FALL-BRED PAIRS

133 FINK MISS 3357 1316 CR

Calved: 8/19/13 Reg#: 17805717 Tattoo: 3357
 COLE CREEK BLACK CEDAR 46P
 COLE CREEK CEDAR RIDGE 1V
 COLE CREEK CLOVANADA 49S
 N BAR EMULATION EXT
 FINK MISS 1316 5523 EXT
 FINK MISS 5523 7326 878

CED	BW	WW	YW	DMI	SC	Doc	Milk
5	1.5	42	75	0.62	0.71	19	30
MW	\$EN	CW	Marb	RE	\$M	\$W	\$B
-6	8	15	0.27	0.02	83	54	67

One of the best all-around females we have ever sold. Great producer, solid udder, tremendous flushes. Again, the Miss family. We have concentrated this female to build solid female lines—but again, one that can be taken any direction for production. She has been flushed many times—along with younger full sisters. In our opinion, this female represents about where the Angus female needs to be. Heifer calf by Barrett Super Duty 4855 born 10-12-19. Bred 12-15-19 to Sitz Rainmaker 11127 (very limited semen on this bull available). If the resulting calf is a bull, Finks will retain a 1/2 semen interest.

This sale will be broadcast live on the internet.

DVAuction
 Broadcasting Real-Time Auctions
 Real time bidding & proxy bidding available.

Videos of the bulls and females will be available March 25. Go to finkbeefgenetics.com or idealvideoproductions.com

135 FINK MISS 5354 3411 1691

Calved: 10/9/15 Reg#: 18507372 Tattoo: 5354
 N BAR EMULATION EXT
 FINK 1691 OF 5523 EXT
 FINK MISS 5523 7326 878
 COLE CREEK CEDAR RIDGE 1V
 FINK MISS 3411 0757 CR
 FINK MISS 0757 2110 5522

CED	BW	WW	YW	DMI	SC	Doc	Milk
4	1.3	51	91	0.96	0.71	9	32
MW	\$EN	CW	Marb	RE	\$M	\$W	\$B
26	-6	41	0.61	0.13	68	64	117

Sired by 1691, owned by Chad Johnson, KS. We used this bull and should have used him more. Beautiful females and problem free. From the cow family of 1691, 3411 was flushed a lot and is now working at Frank Turner's, AL. She is a model female—moderate-framed, perfect udder, great production. We have flushed 5354 a few times. Heifer calf by Barrett Super Duty 4855 born 10-28-19. Bred 12-8-19 to Barrett Overdrive 4856.



Joe Lott, Venus, FL, and Eric Bekemeyer, Washington, KS

134 FINK MISS 3365 5525 EXT

Calved: 8/26/13 Reg#: 17805724 Tattoo: 3365
 EMULATION N BAR 5522
 N BAR EMULATION EXT
 N BAR PRIMROSE 2424
 BON VIEW NEW DESIGN 878
 FINK MISS 5525 7326 878
 FINKS MISS 7326 430 692

CED	BW	WW	YW	DMI	SC	Doc	Milk
7	0	36	67	0.19	0.86	2	24
MW	\$EN	CW	Marb	RE	\$M	\$W	\$B
25	-1	24	0.58	0.13	44	37	110

Beautiful EXT female. Very calm and an excellent producer. We have flushed this female also. We don't flush females on numbers only—we want to reproduce maternal Angus cows. Note she goes back to 8130, the foundation Miss for Damerons. Heifer calf by Barrett Super Duty 4855 born 9-17-19. Bred 12-18-19 to Sitz Rainmaker 11127. If the resulting calf is a bull, Finks will retain a 1/2 semen interest.



Charles Robert Stevens and crew working cattle, Florida.

136 FINK FRVR LADY 3399 6313 AB

Calved: 8/29/13 Reg#: 17818737 Tattoo: 3399
 S A V FINAL ANSWER 0035
 K C F BENNETT ABSOLUTE
 THOMAS MISS LUCY 5152
 A A R NEW TREND
 SUNSET VALLEY FRVR LADY 6313
 S V F FOREVER LADY 57D

CED	BW	WW	YW	DMI	SC	Doc	Milk
8	2	61	110	1.34	1.47	11	33
MW	\$EN	CW	Marb	RE	\$M	\$W	\$B
68	-27	47	0.74	0.46	54	69	128

Powerhouse Absolute daughter. Flushed many times at Finks. Grandam of our high-selling bull last fall going to Billy Estrada, Mexico. One of the very few cow families brought into our herd in 40 years. Some Super Duty bulls in this sale are out of 3399, look them up. Heifer calf by Barrett Super Duty 4855 born 10-23-19. Bred 1-3-20 to Sitz Rainmaker 11127 (try to find that semen!) If the resulting calf is a bull, Finks will retain a 1/2 semen interest.



Presentation from the Mexican Charolais Association for judging their show in Andreas, Mexico, January 2020.

FALL-BRED PAIRS

137 FINK MISS 6815 3366 RCE

Calved: 8/28/16 Reg#: 18841353 Tattoo: 6815
 RITO 707 OF IDEAL 3407 7075
 S A V RESOURCE 1441
 S A V BLACKCAP MAY 4136
 N BAR EMULATION EXT
 FINK MISS 3366 5527 EXT
 FINK MISS 5527 7326 BW

CED	BW	WW	YW	DMI	SC	Doc	Milk
1	3.4	57	102	1.33	0.63	11	25
MW	\$EN	CW	Marb	RE	\$M	\$W	\$B
55	-16	45	0.06	0.62	52	53	98

Resource—EXT—Miss just like several in this sale. Every animal in this pedigree has been a cowmaker. Most Fink females can be taken any direction as a base to build on... whatever direction you want. Heifer calf by Enchanted born 8-18-12. Bred 12-17-19 to Sitz Wisdom 481T.

140 FINK PRIDE 6875 3372 OD

Calved: 8/24/16 Reg#: 18841512 Tattoo: 6875
 S A V RESOURCE 1441
 BARRETT OVERDRIVE 4856
 BARRETT'S MISS 4004 2526 BAR
 S A V FINAL ANSWER 0035
 FINK BONNIE 3372 547 FA
 FINK BONNIE 525 0372 5522

CED	BW	WW	YW	DMI	SC	Doc	Milk
8	1.1	55	94	0.79	0.53	23	29
MW	\$EN	CW	Marb	RE	\$M	\$W	\$B
36	-9	34	0.22	0.51	62	66	99

Overdrive — Final Answer — 5522 bred female. Lots of no-extreme genetics. The way we like them represented here. Really nice SVR XXP Enchanted 5135 heifer calf, born 8-26-19. Bred 12-5-19 to Sitz Wisdom 481T.

138 FINK FORMERA 6864 3381 RCE

Calved: 8/30/16 Reg#: 18841348 Tattoo: 6864
 RITO 707 OF IDEAL 3407 7075
 S A V RESOURCE 1441
 S A V BLACKCAP MAY 4136
 WULFS EXT 6106
 FINK FORMERA 3381 9374 6106
 FINK FORMERA 9374 7223 NPV

CED	BW	WW	YW	DMI	SC	Doc	Milk
4	2.9	62	116	1.57	0.49	22	18
MW	\$EN	CW	Marb	RE	\$M	\$W	\$B
59	-14	46	0.06	0.78	58	51	112

Full sisters: 6864 and 6865
 6864 heifer calf by SVR XXP Enchanted 5135, born 8-23-19.
 6864 bred 12-8-19 to Sitz Wisdom 481T.

141 FINK MISS 5372 1314 CR

Calved: 9/7/15 Reg#: 18507385 Tattoo: 5372
 COLE CREEK BLACK CEDAR 46P
 COLE CREEK CEDAR RIDGE 1V
 COLE CREEK CLOVANADA 49S
 N BAR EMULATION EXT
 FINK MISS 1314 5523 EXT
 FINK MISS 5523 7326 878

CED	BW	WW	YW	DMI	SC	Doc	Milk
6	0.6	42	76	0.61	0.55	8	31
MW	\$EN	CW	Marb	RE	\$M	\$W	\$B
-4	7	22	0.49	0.1	67	52	91

One of those Cedar Ridge — EXT — 878 females — Miss family! We have flushed many sisters to this female. Fink cows are bred to be females that last. Heifer calf by Barrett Super Duty 4855 born 9-25-19. Bred 11-28-19 to S Chisum 6175 (long-time Genex sire)

139 FINK FORMERA 6865 3381 RCE

Calved: 8/28/16 Reg#: 18841349 Tattoo: 6865
 RITO 707 OF IDEAL 3407 7075
 S A V RESOURCE 1441
 S A V BLACKCAP MAY 4136
 WULFS EXT 6106
 FINK FORMERA 3381 9374 6106
 FINK FORMERA 9374 7223 NPV

CED	BW	WW	YW	DMI	SC	Doc	Milk
4	2.9	62	116	1.57	0.49	22	18
MW	\$EN	CW	Marb	RE	\$M	\$W	\$B
59	-14	46	0.06	0.78	58	51	112

2 full sisters: Resource x 6106 x Net Present Value x K205. Embryos on the grandam sold to Argentina.
 6865 heifer calf by Sitz Dash 10277, born 9-2-19.
 6865 bred 12-12-19 to Sitz Wisdom 481T.



Willie helping play the hand at the Collegiate Cattlemen & Cattlewomen Club Christmas party.



Ella Barrett has been on a 12-week internship this spring with Gene and Laurent Lollis and their crew at Buck Island Ranch, Lake Placid, FL. Top picture is her first morning, horseback. She's been blessed to work beside such good cattlemen, good people.

BARRETT B CATTLE

We are keeping only the first AI's on our heifers this year. For those not familiar with our program: To finetune fertility in our herd, any female open at preg-check is culled ■ We score and monitor feet and will cull or turn into a recip if there is an issue ■ Emphasis is placed on disposition and mothering ability/attentiveness ■ We score teat and udders at calving and make culling decisions based on this also ■ A tight calving interval is one of our most important tools, especially in deciding to flush ■ DNA on this group is not reflected in these EPDs but should be updated online by the time the sale book is out. We are happy to share our actual data if needed ■ Our heifers are developed on grass with no supplementation until 75 days prebreeding. For updates and additional photos: barrettcattle.com

145 BARRETT RITA 859 332 XXP

Calved: 9/2/18 Reg#: 19673368 Tattoo: 859
N BAR EMULATION EXT
SINCLAIR EMULATION XXP
N BAR PRIMROSE Y3051
COLE CREEK CEDAR RIDGE 1V
BARRETT RITA 332 113 CR
BARRETT RITA 113 OF 1709 NW

CED	BW	WW	YW	DMI	SC	Doc	Milk
6	0.1	49	90	1.09	0.41	19	24
MW	\$EN	CW	Marb	RE	\$M	\$W	\$B
32	-5	35	0.51	0.14	59	50	108

Due 9-23-20, sexed bull, to S A V RAINFALL 6846. The dam to this female has a calving interval of 5 @ 366. She goes back to our foundation female, 1709. We have a direct daughter of 1709 selling in this group as well.

146 BARRETT MISS 823 654 A1747

Calved: 8/24/18 Reg#: 19673354 Tattoo: 823
N BAR EMULATION EXT
N BAR EMULATION EXT A1747
N BAR CLOVA PRIDE U3031
BASIN PAYWEIGHT 1682
BARRETT MISS 654 4004 PW
BARRETTS MISS 4004 2526 BAR

CED	BW	WW	YW	DMI	SC	Doc	Milk
7	-0.2	45	79	0.42	0.47	12	25
MW	\$EN	CW	Marb	RE	\$M	\$W	\$B
30	-1	37	0.6	0.35	43	49	130

Due 9-18-20, sexed bull, to S A V RAINFALL 6846. The dam of 823 is an extremely nice Payweight x our 4004 cow, dam of Super Duty, Overdrive, Walt, and so many sires working in registered and commercial herds across the U.S. Exceptional mating here.

147 BARRETT RITA 895 1709 FA

Calved: 9/3/18 Reg#: 19677101 Tattoo: 895
SITZ TRAVELER 8180
S A V FINAL ANSWER 0035
S A V EMULOUS 8145
EMULATION N BAR 5522
BARRETTS 1709 OF 1204 5522
BARRETTS 1204 OF OFB1 BANDO

CED	BW	WW	YW	DMI	SC	Doc	Milk
13	-1.8	43	75	0.1	0.79	18	20
MW	\$EN	CW	Marb	RE	\$M	\$W	\$B
10	8	15	0.26	0.11	67	47	89

Due 9-18-20, sexed bull, to BARRETT BUD 685 2526 BAR. 1709 was from embryos bought from Wehrmann Angus, VA. She produced up to 15 years of age with exceptional feet, udder, disposition and never missed a calving opportunity.

148 BARRETT RITA 821 649 A1747

Calved: 8/12/18 Reg#: 19673352 Tattoo: 821
N BAR EMULATION EXT
N BAR EMULATION EXT A1747
N BAR CLOVA PRIDE U3031
BASIN PAYWEIGHT 1682
BARRETT RITA 649 439 PW
BARRETT RITA 439 053 0966

CED	BW	WW	YW	DMI	SC	Doc	Milk
7	-0.2	52	91	0.4	0.13	10	24
MW	\$EN	CW	Marb	RE	\$M	\$W	\$B
36	-9	40	0.5	0.32	44	55	134

Due 9-28-20, sexed bull, to S A V RAINFALL 6846. Grandam is a nice Iron Mike (Nationwide x 4004) female with a calving interval of 4 @ 365.

142 BARRETT MISS 867 456 XXP

Calved: 8/22/18 Reg#: 19673374 Tattoo: 867
N BAR EMULATION EXT
SINCLAIR EMULATION XXP
N BAR PRIMROSE Y3051
S A V RESOURCE 1441
BARRETT MISS 456 4004 RE
BARRETTS MISS 4004 2526 BAR

CED	BW	WW	YW	DMI	SC	Doc	Milk
6	0.7	68	119	1.53	0.4	20	22
MW	\$EN	CW	Marb	RE	\$M	\$W	\$B
62	-20	51	0.37	0.53	57	66	127

Due 9-19-20, sexed heifer, to COLE CREEK CEDAR RIDGE 1V. Dam pictured on page 28 and is a full sib to Super Duty and Overdrive. We have been asked many times, but we do not make it a habit to let 4004 progeny off the place. This is a nice female.

143 BARRETT RITA 844 220 SD

Calved: 9/1/18 Reg#: 19673364 Tattoo: 844
S A V RESOURCE 1441
BARRETT SUPER DUTY 4855
BARRETTS MISS 4004 2526 BAR
L T 598 BANDO 9074
BARRETT RITA 220 3806 9074
BARRETTS RITA 3806 5304 PT

CED	BW	WW	YW	DMI	SC	Doc	Milk
-2	4.3	56	104	1.03	1.17	17	23
MW	\$EN	CW	Marb	RE	\$M	\$W	\$B
33	-4	40	0.22	0.59	59	44	118

Due 9-26-20, sexed bull, to S A V RAINFALL 6846. We got ahold of Rainfall semen and are glad we did. His sons sold very well at Schaffs this spring. Super Duty works really well on our 9074s — this is a very deep, soggy female.

144 BARRETT MISS 873 513 XXP

Calved: 8/22/18 Reg#: 19673377 Tattoo: 873
N BAR EMULATION EXT
SINCLAIR EMULATION XXP
N BAR PRIMROSE Y3051
S A V RESOURCE 1441
BARRETT MISS 513 058 RE
BARRETT MISS 058 2207 6299

CED	BW	WW	YW	DMI	SC	Doc	Milk
4	1.2	47	92	n/a	n/a	n/a	22
MW	\$EN	CW	Marb	RE	\$M	\$W	\$B
n/a	-11	n/a	n/a	n/a	46	39	n/a

Due 9-26-20, sexed bull, to S A V RAINFALL 6846. Nice female from a really nice Resource daughter who has a calving interval of 3 @ 369.

Notes:



Thank You for your interest in our program. Safe travels and stop in again soon.



Beef Genetics

Galen & Lori Fink
15523 Tuttle Creek Blvd.
Randolph, KS 66554



31st Sale

Spring 2020 Sale

Saturday - April 11 - 2020

12:00pm cst - Randolph - Kansas

