

FUNCTIONAL / RELIABLE / PRACTICAL



**FRIDAY, MARCH 24, 2023**

12:30 PM CST | MILL BRAE RANCH | MAPLE HILL, KS



BARRETT **B**<sub>C</sub> CATTLE



Mill Brae Ranch

# **DVAuction**

**Broadcasting Real-Time Auctions**

Watch & Bid online for FREE!

Can't make the sale?

*Let DVAuction bring the sale to you!*

Busy during the sale?

*Let DVAuction represent your bid!*

## **REGISTER TODAY**

1. *Create an account at [www.dvauction.com](http://www.dvauction.com) under the "Register" tab*
2. *Apply for bidding approval by clicking the "Details" tab at least 24 hours prior to the auction*
3. *Tune in for the sale and make your purchases!*

For general questions please contact our office:  
402-316-5460 or [support@dvauction.com](mailto:support@dvauction.com)

*\*High speed internet access required*

# FUNCTIONAL / RELIABLE / PRACTICAL

## BARRETT CATTLE

Gene, Anna, Payden, & Ella Barrett  
bcoffice@barrettcattle.com  
barrettcattle.com  
Gene: 785-224-8509  
Anna: 785-224-8536  
Payden: 785-318-2004



## MILL BRAE RANCH

Mark, Janice, & Taylor Nikkel  
millbraeranch@gmail.com  
millbraeranch.com  
Mark: 785-256-3072  
Janice: 785-256-3523  
Taylor: 785-207-2040

### Auctioneer

Kyle Elwood ..... 785-493-2901

### Selection Assistance & Sale Day Phones

We are confident in these representatives to assist our customers with their selections and bidding. Buyers unable to attend the sale may leave bids with these individuals or directly with representatives of the respective ranches.

Jeff Mafi, *American Angus Association* ..... 816-344-4266

Stephen Russell, *Kansas Stockman* ..... 785-458-2650

Guy Peverley, *The Stock Exchange* ..... 785-456-9911

Dennis Rezac, *Rezac Livestock Commission* ..... 785-456-4187

### Online Bidding and Videos



For customers not able to attend the sale, online bidding will be available through [dvauction.com](http://dvauction.com).

Please contact DV Auction prior to sale day to register for a bidder number. Videos of the cattle will be available after March 8, 2023 on the DV Auction site. Cattle will be on display prior to sale time with a video of each animal shown during the auction. Cattle will not be run through the ring. Come early for viewing!

### Sale Order

Cattle will sell in catalog order unless announced otherwise. The sale order and supplemental sheet will be posted on the DV Auction site as soon as it's available.

### Sale Location

The sale will be held at Mill Brae Ranch,  
15670 Cattlemen Rd, Maple Hill, KS 66507

### Guarantees

Bulls are guaranteed fertile to the best of our knowledge and have undergone a complete Breeding Soundness Exam by Drs. Karl and Adam Lukert, St. Marys Veterinary Services. If they are injured anytime during the first breeding season after they are purchased so as to make them functionally infertile the ranch selling the bull will provide you with a satisfactory replacement if available or issue you credit equal to your purchase minus salvage value. **That credit may be used toward the purchase of an animal from the same ranch in a future sale.** We request that you notify us before you cull your infertile animal. This is not a life insurance policy. Livestock Mortality Insurance will be available for purchase at the sale.

### Inspection of Cattle

Cattle are available for your inspection at the ranch of origin at any time. Barrett Cattle sale bulls will be located at Mill Brae Ranch a few days prior to the sale and can be viewed there after they arrive. Please call if you would like to view the bulls and/or the cow herds prior to the sale.

### Food and refreshments

Coffee and donuts will be available Friday morning. A complimentary beef lunch will be served at 11:30 am.

### Delivery

We will be happy to assist with delivery arrangements. See the Health Certification section below for details regarding out-of-state transport. **Please call Gene or Mark with questions.**

### Health Certification

All sale bulls have passed a breeding soundness examination. A Health Certificate will be provided as required for transportation in Kansas and beyond within the continental US. Please note all the sale bulls are virgin bulls. Depending on the requirements of the state they're being transported to, they may need to be tested and cleared for trich before leaving the sale site. The requirements vary by state. We will start this process immediately and will feed and house the bulls until testing is complete. Please call Gene or Mark with any questions on testing.

### Retained Interest

Each breeder has outlined their retained interest policy in their individual sections providing more information about their respective bulls.

### Identification

Ear tags on cattle correspond with lot numbers in the catalog. All cattle are freeze-branded with the ranch of origin brand and ID number.

### Terms and Conditions

All cattle will sell under the standard terms and conditions recommended by the American Angus Association. Announcements made from the auction block take precedence over information in this catalog.

### Liability

All persons who attend this sale do so at their own risk, legal or otherwise, for their safety or the behavior of the animals. The owner(s), ranch employees, and sale staff assume no liability for property loss or accident that may occur.

### Livestock Mortality Insurance

Livestock Mortality Insurance will be available from Sheila Jensen, Jensen Livestock Agency representing Liberty Mutual Insurance for your purchases. Contact Sheila (785-262-1116) prior to the sale or let one of the clerking staff know you wish to purchase mortality insurance at the time of check-out.

### Transportation/Accommodations

Manhattan, KS and KCI are the closest airports serviced by major airlines. KCI is approximately 1 hour, 15 min. east of Maple Hill. Manhattan is located 45 minutes West. Maple Hill is located approximately 15 miles west of Topeka, KS. There are many hotel accommodations available in Topeka.

# American Angus Association Selection Tools

Expected Progeny Difference (EPD), is the prediction of how future progeny of each animal are expected to perform relative to the progeny of other animals listed in the database. EPDs are expressed in units of measure for the trait, plus or minus.

## PRODUCTION EPDS

**Calving Ease Direct (CED)**, is expressed as a difference in percentage of unassisted births, with a higher value indicating greater calving ease in first-calf heifers. It predicts the average difference in ease with which a sire's calves will be born when he is bred to first-calf heifers.

**Birth Weight (BW)**, expressed in pounds, is a predictor of a sire's ability to transmit birth weight to his progeny compared to that of other sires.

**Weaning Weight (WW)**, expressed in pounds, is a predictor of a sire's ability to transmit weaning growth to his progeny compared to that of other sires.

**Birth Weight EPD (BW)**, expressed in pounds, is a predictor of a sire's ability to transmit birth weight to his progeny compared to that of other sires.

**Weaning Weight EPD (WW)**, expressed in pounds, is a predictor of a sire's ability to transmit weaning growth to his progeny compared to that of other sires.

**Yearling Weight (YW)**, expressed in pounds, is a predictor of a sire's ability to transmit yearling growth to his progeny compared to that of other sires.

**Residual Average Daily Gain (RADG)**, expressed in pounds per day, is a predictor of a sire's genetic ability for postweaning gain in future progeny compared to that of other sires, given a constant amount of feed consumed.

**Dry Matter Intake (DMI)**, expressed in pounds per day, is a predictor of difference transmitting ability for feed intake during the postweaning phase, compared to that of other sires.

**Yearling Height (YH)**, is a predictor of a sire's ability to transmit yearling height, expressed in inches, compared to that of other sires.

**Scrotal Circumference (SC)**, expressed in centimeters, is a predictor of the difference in transmitting ability for scrotal size compared to that of other sires.

**Docility (DOC)**, is expressed as a difference in yearling cattle temperament, with a higher value indicating more favorable docility in a sire's offspring compared to another sire.

## MATERNAL EPDS

**Heifer Pregnancy (HP)**, is a selection tool to increase the probability or chance of a sire's daughters becoming pregnant as first-calf heifers during a normal breeding season. A higher EPD is the more favorable direction, and the EPD is reported in percentage units.

**Calving Ease Maternal (CEM)**, is expressed as a difference in percentage of unassisted births, with a higher value indicating greater calving ease in first-calf daughters. It predicts the average ease with which a sire's daughters will calve as first-calf heifers when compared to daughters of other sires.

**Maternal Milk (Milk)**, is a predictor of a sire's genetic merit for milk and mothering ability in his daughters compared to daughters of other sires. In other words, it is that part of a calf's weaning weight attributed to milk and mothering ability.

**Mature Weight (MW)**, expressed in pounds, is a predictor of the difference in mature weight of daughters of a sire compared to the daughters of other sires.

**Mature Height (MH)**, expressed in inches, is a predictor of the difference in mature height of a sire's daughters compared to daughters of other sires.

**Cow Energy Value (\$EN)**, expressed in dollar savings per cow per year, assesses differences in cow energy requirements as an expected dollar savings difference in daughters of sires. A larger value is more favorable when comparing two animals (more dollars saved on feed energy expenses). Components for computing the cow \$EN savings difference include lactation energy requirements and energy costs associated with differences in mature cow size.

## MANAGEMENT EPDS

**Docility (DOC)**, is expressed as a difference in yearling cattle temperament, with a higher value indicating more favorable docility. It predicts the average difference of progeny from a sire in comparison with another sire's calves. In herds where temperament problems are not an issue, this expected difference would not be realized.

**Claw Set (Claw)**, is expressed in units of claw-set score, with a lower EPD being more favorable indicating a sire will produce progeny with more ideal claw set. The ideal claw set is toes that are symmetrical, even and appropriately spaced.

**Foot Angle (Angle)**, is expressed in units of foot-angle score, with a lower EPD being more favorable indicating a sire will produce progeny with more ideal foot angle. The ideal is a 45-degree angle at the pastern joint with appropriate toe length and heel depth.

**Pulmonary arterial pressure (PAP)**, is expressed in millimeters of Mercury (mmHg), with a lower EPD being more favorable indicating a sire should produce progeny with a lower PAP score. PAP score is an indicator of susceptibility to high altitude disease commonly experienced at elevations greater than 5,500 feet. Selection for this trait aims to improve the genetic potential for a sire's progeny to have lower PAP scores thus a lower chance of contracting high altitude disease increasing the environmental adaptability of cattle living in mountain areas.

**Hair Shed (HS)**, is expressed in units of hair shed score, with a lower EPD being more favorable indicating a sire should produce progeny who shed their winter coat earlier in the spring. Selection for this trait should improve the genetic potential for a sire's progeny to shed off earlier increasing the environmental adaptability of cattle living in heat stressed areas and producers grazing endophyte-infected (hot) fescue.

## CARCASS EPDS

**Carcass Weight (CW)**, expressed in pounds, is a predictor of the differences in hot carcass weight of a sire's progeny compared to progeny of other sires.

**Marbling (Marb)**, is expressed as a fraction of the difference in USDA marbling score of a sire's progeny compared to progeny of other sires.

**Ribeye Area (RE)**, expressed in square inches, is a predictor of the difference in ribeye area of a sire's progeny compared to progeny of other sires.

**Fat Thickness (Fat)**, expressed in inches, is a predictor of the differences in external fat thickness at the 12th rib (as measured between the 12th and 13th ribs) of a sire's progeny compared to progeny of other sires.

## \$VALUE INDEXES

**Maternal Weaned Calf Value (\$M)**, expressed in dollars per head, predicts profitability differences in progeny due to genetics from conception to weaning. Increased selection pressure on \$M aims to decrease overall mature cow size and improve foot structure and fertility while maintaining weaning weights consistent with today's production.

**Weaned Calf Value (\$W)**, expressed in dollars per head, provides the expected difference in future progeny preweaning performance from birth to weaning. Increased selection pressure on \$W increases weaning and maternal milk traits while increasing mature cow size.

**Cow Energy Value (\$EN)**, expressed in dollar savings per cow per year, assesses differences in cow energy requirements as an expected dollar savings difference in daughters of sires. A larger value is more favorable when comparing two animals. Components for computing \$EN savings difference include lactation energy requirements and energy costs associated with differences in mature cow size.

**Feedlot Value (\$F)**, expressed in dollars per head, is the expected average difference in future progeny performance for postweaning merit compared to progeny of other sires. The underlying objective assumes commercial producers will retain ownership of cattle through the feedlot phase and sell fed cattle on a carcass weight basis with no considerations of premiums or discounts for quality and yield grade.

**Grid Value (\$G)**, expressed in dollars per carcass, is the expected average difference in future progeny performance for carcass grid merit, including quality and yield grade attributes, compared to progeny of other sires.

**Beef Value (\$B)**, expressed in dollars per carcass, represents the expected average differences in the progeny postweaning performance and carcass value compared to progeny of other sires. This index assumes commercial producers wean all male and female progeny, retain ownership of these animals through the feedlot phase, and market these animals on a quality-based carcass grid.

**Combined Value (\$C)**, an index, expressed in dollars per head, which includes all traits that make up both Maternal Weaned Calf Value (\$M) and Beef Value (\$B) with the objective that commercial producers will replace 20% of their breeding females per year with replacement heifers retained within their own herd. The remaining cull heifer and steer progeny are then assumed to be sent to the feedlot where the producers retain ownership of those cattle and sell them on a quality-based carcass merit grid. Expected progeny differences (EPDs) directly influencing a combined index: calving ease direct (CED) and maternal (CEM), weaning weight (WW), yearling weight (YW), maternal milk (Milk), heifer pregnancy (HP), docility (DOC), mature cow weight (MW), foot angle (Angle), claw set (Claw), dry matter intake (DMI), marbling (Marb), carcass weight (CW), ribeye area (RE) and fat thickness (Fat).

## AAA SPECIAL PROGRAMS

### Pathfinder Status

An American Angus Association program identifying superior females and bulls in the breed. Emphasis is placed on early puberty, breeding, early calving, followed by regularity of calving and above-average performance of their offspring. Pathfinder status is denoted by a (#) sign before an animal's name in the pedigree.



Both operations are dedicated to data reporting and are enrolled in the AAA Inventory Reporting program, earning MaternalPlus status. The MaternalPlus program expands reproductive and cow longevity tools

allowing us to further enhance effective selection decisions. *The MaternalPlus program augments our steadfast commitment to maintaining maternally efficient cowherds. For 30+ years, both operations have placed selection pressure on mothering ability and udder quality... traits we measure even when an EPD doesn't yet exist.*



All bulls have been genomic tested and individual performance data collected and submitted to the American

Angus Association which is reflected in their EPDs. EPDs for the Spring bulls are current as of 01/26/23 and EPDs for the Fall bulls are current as of 01/12/23.



The logo will be displayed on all bulls meeting the specifications which is a minimum marbling EPD (Marb) of +0.65 and an Angus Grid Value Index (\$G) of +55 or higher.

---

# MILL BRAE RANCH

---

Registered Angus Cattle

---

Mark Nikkel, 785-256-3072  
Janice Nikkel, 785-256-3523  
Taylor Nikkel, 785-207-2040



15670 Cattlemen Rd.  
Maple Hill, Kansas 66507  
millbraeranch@gmail.com  
millbraeranch.com

As we prepare for this year's sale, we're excited about the opportunity of marketing our bulls jointly with the Barrett Cattle. The two programs have similar production values and a passion for building and maintaining functional cow herds. These bulls are a product of those reliable, functional, practical cows. Although our numbers are small this year, we continue to increase the number of registered females in our herd through an intensive embryo transfer program utilizing our own recipient cows. We know these cattle well because we spend a considerable amount of time with them. Any exhibiting unworthy characteristics and traits are removed.

We appreciate the valued relationships and friends we've acquired over the years. Your business is of the up most importance to us and isn't something we take lightly. We've gone to great lengths in recording and submitting unbiased data for a multitude of traits. Supplemented with the genomic test providing you with the most reliable EPDs available. For over 30 years we've been recording data on udder quality and mothering ability at the time

of calving, traits for which an EPD doesn't yet exist. We firmly believe in the measurement of production traits and will continue collecting and submitting data to the breed associations. A genomic-enhanced EPD is only sustainable if it's coupled with the submission of actual data.

We look forward to seeing you on March 24th! Please let us know if we can answer any questions or if you'd like to view the bulls prior to sale day.

*Mark, Janice, & Taylor Nikkel*



Front and center, Mill Brae FA Joanie 9263, pathfinder maternal great grandam of Benchmark

## *A Word About the Mill Brae Bulls ...*

### **Management**

The Mill Brae bulls were weaned late August and received no creep prior to weaning. They've been fed a high roughage ration designed for 3 lbs. average daily gain. The bulls have been maintained in a large trap requiring them to walk multiple times a day between feed and water keeping them in peak physical condition for breeding.

Pre-weaning the bulls were vaccinated with Enforce 3, Moraxella Bovis Bacterin-Toxoid Alpha 7/MB-1 (Blackleg with Pinkeye).

Mid-Summer they were vaccinated with Pyramid 5 + Presponse SQ, Moraxella Bovoculi Bactrin, Moraxella Bovis Bacterin, Ocu-Guard MB-1, Dectomax injectable wormer, and Clean Up II pour-on.

At weaning, bulls were vaccinated with Pyramid 5 and Ivermax pour on applied.

Early September the bulls were tattooed and vaccinated with 1 Ultrabac 7/Somubac.

Mid-November the bulls were freeze branded, vaccinated with wart vaccine and received Ivermax pour on.

At approximately 365 days of age the bulls were weighed, scrotal measured, disposition and foot scored, and ultrasounded for carcass measurements by an AAA CUP Certified technician.

All bulls were given a complete breeding soundness exam by Drs. Karl and Adam Lukert, DVM. Breeding soundness exam papers will be provided to the buyer at the time of check-out. Bulls have tested P.I. negative.

The bulls have been handled regularly by people and "Roxie" the cow dog. They're gentle and easy to work with.

### **Retained Interest**

Mill Brae Ranch reserves the right to retain a 1/3 semen interest on their bulls in the sale unless otherwise noted. The new owner will own full possession and 100% salvage value of the bull. The semen interest is retaining the right to 1/3 of the semen sales revenue from the bull if sometime in the future, semen sales become a possibility.

Ref Sire

# Mill Brae Benchmark 9016

AGI  
GE-EPD  
REG: +\*19503604

BD: 2/5/19

ID: 9016

|                           |                           |                            |      |     |     |
|---------------------------|---------------------------|----------------------------|------|-----|-----|
| #Connealy Confidence Plus | #Connealy Confidence 0100 | Connealy Tobin             | \$M  | 76  | 15% |
|                           | Elbanna of Conanga 1209   | Becka Gala of Conanga 8281 | \$W  | 75  | 10% |
| #Mill Brae FP Joanie 3063 | #Connealy Final Product   | #Connealy Consensus        | \$F  | 95  | 35% |
|                           | #Mill Brae FA Joanie 9263 | Elbasta of Conanga 9703    | \$G  | 52  | 40% |
|                           |                           | #Connealy Product 568      | \$B  | 147 | 35% |
|                           |                           | #Ebonista of Conanga 471   | \$C  | 267 | 25% |
|                           |                           | #SAV Final Answer 0035     | \$EN | -31 | 85% |
|                           |                           | Mill Brae Joanie Ferd 903  |      |     |     |



Sire of Lots 1-16

|       |      |       |      |      |      |      |     |     |     |     |      |     |     |     |      |     |
|-------|------|-------|------|------|------|------|-----|-----|-----|-----|------|-----|-----|-----|------|-----|
| ANGUS | CED  | BW    | WW   | YW   | RADG | DMI  | YH  |     |     |     |      |     |     |     |      |     |
|       | 7    | 45%   | 2.7  | 85%  | 80   | 10%  | 147 | 10% | .30 | 15% | 1.52 | 85% | .5  | 50% |      |     |
|       | SC   | HP    | CEM  | Milk | MW   | MH   | DOC |     |     |     |      |     |     |     |      |     |
|       | 1.16 | 30%   | 14.5 | 15%  | 6    | 70%  | 32  | 15% | 80  | 30% | .2   | 60% | 19  | 45% |      |     |
|       | CLAW | ANGLE | PAP  | HS   | CW   | MARB | RE  | FAT |     |     |      |     |     |     |      |     |
|       | .40  | 15%   | .47  | 40%  | 3.42 | 95%  | .31 | 15% | 52  | 35% | .62  | 40% | .83 | 20% | .046 | 90% |

Benchmark is a blending of maternal productivity and exceptional performance. His Pathfinder dam Mill Brae FP Joanie 3063 walks with the best of the breed. Our Benchmark calves came easily at birth and weaned off as the high-ratioing sire group. They're docile with exceptional foot quality.



EWA 658 of 3114 Momentum  
Dam of Lots 1-2

1

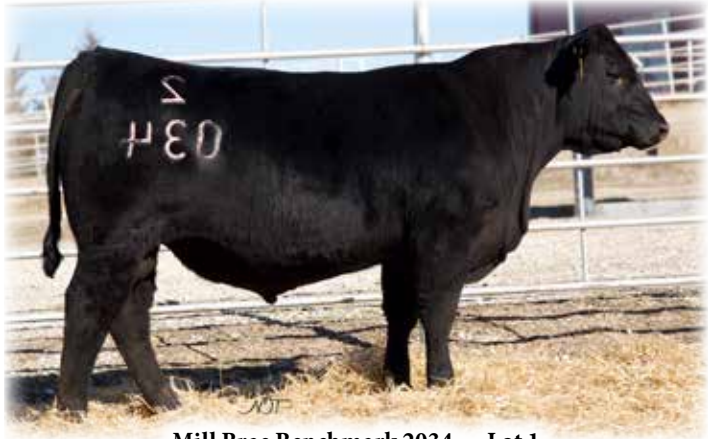
# Mill Brae Benchmark 2034

ANGUS65  
REG: +20421495

BD: 01/28/22

ID: 2034

|                          |                           |                           |      |     |     |
|--------------------------|---------------------------|---------------------------|------|-----|-----|
| Mill Brae Benchmark 9016 | #Connealy Confidence Plus | #Connealy Confidence 0100 | \$M  | 73  | 25% |
|                          | #Mill Brae FP Joanie 3063 | Elbanna of Conanga 1209   | \$W  | 82  | 3%  |
| EWA 658 of 3114 Momentum | G A R Momentum            | #Connealy Final Product   | \$F  | 90  |     |
|                          | EWA 3114 of 128 Weigh Up  | #Mill Brae FA Joanie 9263 | \$G  | 96  | 1%  |
|                          |                           | #G A R Progress           | \$B  | 186 | 5%  |
|                          |                           | G A R Big Eye 1770        | \$C  | 314 | 4%  |
|                          |                           | #Plattemere Weigh Up K360 | \$EN | -30 |     |
|                          |                           | Edgewood Jaunty 128       |      |     |     |



Mill Brae Benchmark 2034 — Lot 1

|             |        |        |      |        |      |        |         |           |        |          |      |          |      |     |       |     |
|-------------|--------|--------|------|--------|------|--------|---------|-----------|--------|----------|------|----------|------|-----|-------|-----|
| HEIFER BULL | CED    | BW     | WW   | YW     | RADG | DMI    | YH      |           |        |          |      |          |      |     |       |     |
|             | 16     | 1%     | -1.7 | 5%     | 77   | 15%    | 142     | 10%       | .29    | 20%      | 1.76 |          | .4   |     |       |     |
|             | SC     | HP     | CEM  | Milk   | MW   | MH     | DOC     |           |        |          |      |          |      |     |       |     |
|             | 1.0    |        | 12.6 |        | 9    |        | 33      | 15%       | 78     | 35%      | .1   |          | 24   | 25% |       |     |
|             | CLAW   | ANGLE  | PAP  | HS     | CW   | MARB   | RE      | FAT       |        |          |      |          |      |     |       |     |
|             | .47    |        | .42  | 20%    | 3.38 |        | .55     |           | 51     |          | 1.37 | 3%       | 1.17 | 2%  | -.011 | 20% |
|             | Act BW | Adj WW | WR   | Adj YW | YR   | Adj SC | Adj IMF | IMF Ratio | Adj RE | RE Ratio | ADG  | Docility |      |     |       |     |
|             | ET     | 669    | ET   | 1162   | ET   | 33.4   | 3.88    | 126       | 14.9   | 103      | 3.08 | 1        |      |     |       |     |

2

# Mill Brae Benchmark 2035

ANGUS65  
REG: +20421496

BD: 02/01/22

ID: 2035

|                          |                           |                           |      |     |     |
|--------------------------|---------------------------|---------------------------|------|-----|-----|
| Mill Brae Benchmark 9016 | #Connealy Confidence Plus | #Connealy Confidence 0100 | \$M  | 82  | 10% |
|                          | #Mill Brae FP Joanie 3063 | Elbanna of Conanga 1209   | \$W  | 79  | 5%  |
| EWA 658 of 3114 Momentum | #Connealy Final Product   | #Connealy Consensus       | \$F  | 95  | 30% |
|                          | #Mill Brae FA Joanie 9263 | Elbasta of Conanga 9703   | \$G  | 66  | 20% |
|                          | #G A R Progress           | #G A R Progress           | \$B  | 161 | 20% |
|                          | G A R Big Eye 1770        | G A R Big Eye 1770        | \$C  | 291 | 10% |
|                          | #Plattemere Weigh Up K360 | #Plattemere Weigh Up K360 | \$EN | -33 |     |
|                          | Edgewood Jaunty 128       | Edgewood Jaunty 128       |      |     |     |

## Flush Brothers | Lots 1-2

- Dam is an elite donor combining a picture-perfect profile with the numbers to back it. Ranking at the top of the breed for WW, YW, Marb, RE, \$W, \$G, \$B, and \$C, she combines growth with carcass merit in a stunning package.
- Heifer bulls combining strong birth-growth spread, carcass merit, breed-leading maternal, with desirable foot characteristics, in a deep-bodied, gentle package.

|             |        |        |      |        |      |        |         |           |        |          |      |          |     |     |      |
|-------------|--------|--------|------|--------|------|--------|---------|-----------|--------|----------|------|----------|-----|-----|------|
| HEIFER BULL | CED    | BW     | WW   | YW     | RADG | DMI    | YH      |           |        |          |      |          |     |     |      |
|             | 8      | 35%    | 2.0  |        | 82   | 10%    | 151     | 4%        | .27    | 35%      | 2.36 |          | .9  | 15% |      |
|             | SC     | HP     | CEM  | Milk   | MW   | MH     | DOC     |           |        |          |      |          |     |     |      |
|             | .5     |        | 12.5 |        | 7    |        | 32      | 15%       | 85     | 25%      | .4   |          | 33  | 2%  |      |
|             | CLAW   | ANGLE  | PAP  | HS     | CW   | MARB   | RE      | FAT       |        |          |      |          |     |     |      |
|             | .33    | 3%     | .39  | 10%    | 3.28 |        | .31     | 15%       | 60     | 25%      | .83  | 30%      | .92 | 15% | .011 |
|             | Act BW | Adj WW | WR   | Adj YW | YR   | Adj SC | Adj IMF | IMF Ratio | Adj RE | RE Ratio | ADG  | Docility |     |     |      |
|             | ET     | 670    | ET   | 1214   | ET   | 35.5   | 3.81    | 100       | 14.2   | 100      | 3.40 | 1        |     |     |      |

**Flush Brothers | Lots 3-8**

- Dam is an exceptional donor carrying on the tradition of the productive Mill Brae Joanie females.
- Ranking in the top of the breed for WW, YW, RADG, SC, DOC, Marb, \$W, \$F, \$G, and \$C she is the epitome of the perfect Angus female.
- Her ten-year-old dam was in this herd until we unexpectedly lost her in 2021.



**Mill Brae PW Joanie 8223**  
Donor dam of Lots 3-8


- These six flush brothers are uniquely bred and backed by the legendary MB Joanie 8E8 1627 on both sides of their pedigree.
- A combination of breed leading growth, superior carcass and maternal merit in a functional scale crushing package.



**Mill Brae Benchmark 2033 — Lot 3**



**Mill Brae FP Joanie 3063**  
Pathfinder dam of Benchmark

**3 | Mill Brae Benchmark 2033** ANGUS68 

BD: 01/28/22 ID: 2033 REG: +20421494

|                                 |                           |                   |
|---------------------------------|---------------------------|-------------------|
| #Connealy Confidence Plus       | #Connealy Confidence 0100 | <b>\$M</b> 71 30% |
| <b>Mill Brae Benchmark 9016</b> | Elbanna of Conanga 1209   | <b>\$W</b> 92 1%  |
| #Mill Brae FP Joanie 3063       | #Connealy Final Product   | <b>\$F</b> 123 3% |
|                                 | #Mill Brae FA Joanie 9263 | <b>\$G</b> 65 20% |
| #Basin Payweight 1682           | #Basin Payweight 0065     | <b>\$B</b> 187 5% |
| <b>Mill Brae PW Joanie 8223</b> | 21AR O Lass 7017          | <b>\$C</b> 314 4% |
| Mill Brae DB Joanie 1072        | #MCC Daybreak             | <b>\$EN</b> -50   |
|                                 | Mill Brae IF Joanie 9088  |                   |

| CEW     | BW     | WW     | YW     | RADG   | DMI     | YH      |           |        |          |      |          |
|---------|--------|--------|--------|--------|---------|---------|-----------|--------|----------|------|----------|
| 7       | 3.2    | 102 1% | 180 1% | .33 4% | 2.24    | 1.1 5%  |           |        |          |      |          |
| SC      | HP     | CEM    | Milk   | MW     | MH      | DOC     |           |        |          |      |          |
| 1.5 15% | 12.2   | 7      | 33 15% | 119 4% | .9 10%  | 27 15%  |           |        |          |      |          |
| CLAW    | ANGLE  | PAP    | HS     | CW     | MARB    | RE      | FAT       |        |          |      |          |
| .54     | .49    | 3.75   | .60    | 86 1%  | .84 30% | .93 15% | .030      |        |          |      |          |
| Act BW  | Adj WW | WR     | Adj YW | YR     | Adj SC  | Adj IMF | IMF Ratio | Adj RE | RE Ratio | ADG  | Docility |
| ET      | 802    | ET     | 1351   | ET     | 38.4    | 3.53    | 115       | 14.9   | 103      | 3.43 | 1        |



## Flush Brothers | Lots 3-8

- Excellent foot structure and calm dispositions.
- They check the boxes for profitable traits.
- This flush produced six stand-out bulls



Mill Brae Benchmark 2025 — Lot 4

**Functional**  
**Predictable**  
**Practical**



Mill Brae Benchmark 2038 — Lot 5

### 4 | Mill Brae Benchmark 2025 ANGUS6S

BD: 01/26/22 ID: 2025 REG: +20421491

**Mill Brae Benchmark 9016**  
#Connealy Confidence Plus  
#Mill Brae FP Joanie 3063

**Mill Brae PW Joanie 8223**  
#Basin Payweight 1682  
Mill Brae DB Joanie 1072

#Connealy Confidence 0100  
Elbanna of Conanga 1209  
#Connealy Final Product  
#Mill Brae FA Joanie 9263  
#Basin Payweight 006S  
21AR O Lass 7017  
#MCC Daybreak  
Mill Brae IF Joanie 9088

|      |         |
|------|---------|
| \$M  | 65      |
| \$W  | 82 3%   |
| \$F  | 108 10% |
| \$G  | 46      |
| \$B  | 154 30% |
| \$C  | 265 30% |
| \$EN | -26     |

| HEIFER BULL | CED    | BW  | WW     | YW   | RADG   | DMI     | YH        |        |          |      |          |    |
|-------------|--------|-----|--------|------|--------|---------|-----------|--------|----------|------|----------|----|
|             | 13     | 10% | -.1    | 25%  | 77     | 15%     | 143       | 10%    | .30      | 15%  | 1.77     | .6 |
|             | SC     | HP  | CEM    | Milk | MW     | MH      | DOC       |        |          |      |          |    |
|             | 1.5    | 20% | 9.3    | 6    | 34     | 10%     | 67        | .2     | 18       |      |          |    |
| CLAW        | ANGLE  | PAP | HS     | CW   | MARB   | RE      | FAT       |        |          |      |          |    |
|             | .52    | .46 | 35%    | 3.98 | .74    | 65      | 15%       | .55    | .85      | 20%  | .077     |    |
| Act BW      | Adj WW | WR  | Adj YW | YR   | Adj SC | Adj IMF | IMF Ratio | Adj RE | RE Ratio | ADG  | Docility |    |
| ET          | 740    | ET  | 1290   | ET   | 36.8   | 3.19    | 104       | 15.2   | 106      | 3.44 | 1        |    |

### 5 | Mill Brae Benchmark 2038 ANGUS6S

BD: 02/03/22 ID: 2038 REG: +20421498

**Mill Brae Benchmark 9016**  
#Connealy Confidence Plus  
#Mill Brae FP Joanie 3063

**Mill Brae PW Joanie 8223**  
#Basin Payweight 1682  
Mill Brae DB Joanie 1072

#Connealy Confidence 0100  
Elbanna of Conanga 1209  
#Connealy Final Product  
#Mill Brae FA Joanie 9263  
#Basin Payweight 006S  
21AR O Lass 7017  
#MCC Daybreak  
Mill Brae IF Joanie 9088

|      |     |     |
|------|-----|-----|
| \$M  | 68  | 35% |
| \$W  | 82  | 3%  |
| \$F  | 92  | 35% |
| \$G  | 55  | 35% |
| \$B  | 147 |     |
| \$C  | 259 | 35% |
| \$EN | -34 |     |

| HEIFER BULL | CED    | BW  | WW     | YW   | RADG   | DMI     | YH        |        |          |      |          |      |
|-------------|--------|-----|--------|------|--------|---------|-----------|--------|----------|------|----------|------|
|             | 5      | 1.6 | 83     | 5%   | 143    | 10%     | .25       | 1.89   | .8       | 25%  |          |      |
|             | SC     | HP  | CEM    | Milk | MW     | MH      | DOC       |        |          |      |          |      |
|             | 1.4    | 20% | 11.3   | 5    | 31     | 20%     | 87        | 25%    | .4       | 18   |          |      |
| CLAW        | ANGLE  | PAP | HS     | CW   | MARB   | RE      | FAT       |        |          |      |          |      |
|             | .41    | 20% | .45    | 30%  | 4.07   | .78     | 60        | 25%    | .77      | 35%  | .57      | .047 |
| Act BW      | Adj WW | WR  | Adj YW | YR   | Adj SC | Adj IMF | IMF Ratio | Adj RE | RE Ratio | ADG  | Docility |      |
| ET          | 699    | ET  | 1232   | ET   | 38.0   | 2.63    | 86        | 14.8   | 103      | 3.33 | 1        |      |

6

Mill Brae Benchmark 2026

ANGUS6S



BD: 01/26/22 ID: 2026 REG: +20421492

|   |  |   |
|---|--|---|
| #Connealy Confidence Plus<br><b>Mill Brae Benchmark 9016</b><br>#Mill Brae FP Joanie 3063 | #Connealy Confidence 0100<br>Elbanna of Conanga 1209<br>#Connealy Final Product<br>#Mill Brae FA Joanie 9263 | \$M 73 25%<br>\$W 78 10%<br>\$F 101 20%<br>\$G 56 35%<br>\$B 157 25%<br>\$C 277 20%<br>\$EN -20 |
| #Basin Payweight 1682<br><b>Mill Brae PW Joanie 8223</b><br>Mill Brae DB Joanie 1072      | #Basin Payweight 006S<br>21AR O Lass 7017<br>#MCC Daybreak<br>Mill Brae IF Joanie 9088                       |   |

|                    |              |            |           |           |             |           |            |        |          |      |          |
|--------------------|--------------|------------|-----------|-----------|-------------|-----------|------------|--------|----------|------|----------|
| <b>HEIFER BULL</b> | CED          | BW         | WW        | YW        | RADG        | DMI       | YH         |        |          |      |          |
|                    | 14 4%        | -1.2 10%   | 73 20%    | 136 15%   | .28 25%     | 1.82      | .6         |        |          |      |          |
|                    | SC           | HP         | CEM       | Milk      | MW          | MH        | DOC        |        |          |      |          |
|                    | 1.3 25%      | 10.8       | 8         | 31 20%    | 58          | .2        | 28 10%     |        |          |      |          |
| <b>CLAW</b>        | <b>ANGLE</b> | <b>PAP</b> | <b>HS</b> | <b>CW</b> | <b>MARB</b> | <b>RE</b> | <b>FAT</b> |        |          |      |          |
| .50                | .51          | 2.34       | .63       | 58 25%    | .80 30%     | .60       | .058       |        |          |      |          |
| Act BW             | Adj WW       | WR         | Adj YW    | YR        | Adj SC      | Adj IMF   | IMF Ratio  | Adj RE | RE Ratio | ADG  | Docility |
| ET                 | 618          | ET         | 1164      | ET        | 36.8        | 3.00      | 98         | 13.5   | 94       | 3.41 | 1        |

7

Mill Brae Benchmark 2037

ANGUS6S



BD: 02/02/22 ID: 2037 REG: +20421497

|   |  |  |
|---|--|--|
| #Connealy Confidence Plus<br><b>Mill Brae Benchmark 9016</b><br>#Mill Brae FP Joanie 3063 | #Connealy Confidence 0100<br>Elbanna of Conanga 1209<br>#Connealy Final Product<br>#Mill Brae FA Joanie 9263 | \$M 69 35%<br>\$W 82 3%<br>\$F 109 10%<br>\$G 64 20%<br>\$B 174 15%<br>\$C 295 10%<br>\$EN -43 |
| #Basin Payweight 1682<br><b>Mill Brae PW Joanie 8223</b><br>Mill Brae DB Joanie 1072      | #Basin Payweight 006S<br>21AR O Lass 7017<br>#MCC Daybreak<br>Mill Brae IF Joanie 9088                       |  |

|                    |              |            |           |           |             |           |            |        |          |      |          |
|--------------------|--------------|------------|-----------|-----------|-------------|-----------|------------|--------|----------|------|----------|
| <b>HEIFER BULL</b> | CED          | BW         | WW        | YW        | RADG        | DMI       | YH         |        |          |      |          |
|                    | 3            | 3.2        | 90 2%     | 164 1%    | .33 4%      | 2.12      | 1.4 1%     |        |          |      |          |
|                    | SC           | HP         | CEM       | Milk      | MW          | MH        | DOC        |        |          |      |          |
|                    | 1.8 10%      | 14.7 20%   | 3         | 34 10%    | 104 10%     | .8 15%    | 20         |        |          |      |          |
| <b>CLAW</b>        | <b>ANGLE</b> | <b>PAP</b> | <b>HS</b> | <b>CW</b> | <b>MARB</b> | <b>RE</b> | <b>FAT</b> |        |          |      |          |
| .46 35%            | .50          | 4.56       | .81       | 76 4%     | .90 25%     | .74 35%   | .034       |        |          |      |          |
| Act BW             | Adj WW       | WR         | Adj YW    | YR        | Adj SC      | Adj IMF   | IMF Ratio  | Adj RE | RE Ratio | ADG  | Docility |
| ET                 | 734          | ET         | 1385      | ET        | 38.5        | 3.27      | 107        | 13.6   | 94       | 4.07 | 1        |

8

Mill Brae Benchmark 2021

ANGUS6S



BD: 01/24/22 ID: 2021 REG: +20421490

|   |  |  |
|---|--|--|
| #Connealy Confidence Plus<br><b>Mill Brae Benchmark 9016</b><br>#Mill Brae FP Joanie 3063 | #Connealy Confidence 0100<br>Elbanna of Conanga 1209<br>#Connealy Final Product<br>#Mill Brae FA Joanie 9263 | \$M 66<br>\$W 87 1%<br>\$F 110 10%<br>\$G 59 30%<br>\$B 169 15%<br>\$C 285 15%<br>\$EN -36 |
| #Basin Payweight 1682<br><b>Mill Brae PW Joanie 8223</b><br>Mill Brae DB Joanie 1072      | #Basin Payweight 006S<br>21AR O Lass 7017<br>#MCC Daybreak<br>Mill Brae IF Joanie 9088                       |  |

|                    |              |            |           |           |             |           |            |        |          |      |          |
|--------------------|--------------|------------|-----------|-----------|-------------|-----------|------------|--------|----------|------|----------|
| <b>HEIFER BULL</b> | CED          | BW         | WW        | YW        | RADG        | DMI       | YH         |        |          |      |          |
|                    | 12 10%       | .0 25%     | 81 10%    | 143 10%   | .27 35%     | 1.71      | .8 25%     |        |          |      |          |
|                    | SC           | HP         | CEM       | Milk      | MW          | MH        | DOC        |        |          |      |          |
|                    | .9           | 11.9       | 8         | 37 3%     | 85 25%      | .6 30%    | 24 25%     |        |          |      |          |
| <b>CLAW</b>        | <b>ANGLE</b> | <b>PAP</b> | <b>HS</b> | <b>CW</b> | <b>MARB</b> | <b>RE</b> | <b>FAT</b> |        |          |      |          |
| .57                | .52          | 2.83       | .71       | 69 10%    | .74 35%     | 1.01 10%  | .054       |        |          |      |          |
| Act BW             | Adj WW       | WR         | Adj YW    | YR        | Adj SC      | Adj IMF   | IMF Ratio  | Adj RE | RE Ratio | ADG  | Docility |
| ET                 | 604          | ET         | 1167      | ET        | 36.2        | 2.89      | 94         | 15.8   | 110      | 3.52 | 1        |

Flush Brothers | Lots 3-8





Mill Brae Benchmark 2015 — Lot 9



Plowman 1627 of Millbrae SAR  
Maternal grandsire of Lot 9



Mill Brae SA Delia 5119 — Foundation donor and  
maternal great grandam of Lot 9

9

Mill Brae Benchmark 2015

ANGUS65

BD: 01/17/22

ID: 2015

REG: 20421489

|                                 |                               |                           |                 |
|---------------------------------|-------------------------------|---------------------------|-----------------|
| <b>Mill Brae Benchmark 9016</b> | #Connealy Confidence Plus     | #Connealy Confidence 0100 | <b>\$M</b> 65   |
|                                 | #Mill Brae FP Joanie 3063     | Elbanna of Conanga 1209   |                 |
| <b>Mill Brae PM Delia 0020</b>  | #Plowman 1627 of Millbrae SAR | #Connealy Final Product   | <b>\$F</b> 89   |
|                                 | Mill Brae Bis Delia 2139      | #Mill Brae FA Joanie 9263 | <b>\$G</b> 52   |
|                                 |                               | #D H D Traveler 6807      | <b>\$B</b> 141  |
|                                 |                               | #M B Joanie 8E8 1627      | <b>\$C</b> 248  |
|                                 |                               | #S A V Bismarck 5682      | <b>\$EN</b> -35 |
|                                 |                               | Mill Brae SA Delia 5119   |                 |

- We mixed “new school” and “old school”. Plowman was an impactful sire for our program and his pathfinder dam “Joanie” left us with progeny continuing to make an impact in the Angus breed.
- Lot 9’s maternal great grandam, Mill Brae SA Delia 5119, was a foundation donor raising bulls consistently sought after by our commercial customers.
- This bull’s young dam did a great job with this fellow and is earning her way to becoming a top producer.
- Super gentle heifer bull with breed leading growth EPDs.

| HEIFER BULL | CED    | BW  | WW     | YW   | RADG   | DMI     | YH        |        |          |      |          |    |     |
|-------------|--------|-----|--------|------|--------|---------|-----------|--------|----------|------|----------|----|-----|
|             | 13     | 10% | -.3    | 20%  | 80     | 10%     | 147       | 5%     | .32      | 10%  | 1.56     | .9 | 15% |
|             | SC     | HP  | CEM    | Milk | MW     | MH      | DOC       |        |          |      |          |    |     |
|             | 1.2    | 30% | 9.8    | 9    | 25     | 98      | 15%       | .7     | 20%      | 21   |          |    |     |
| CLAW        | ANGLE  | PAP | HS     | CW   | MARB   | RE      | FAT       |        |          |      |          |    |     |
|             | .34    | 4%  | .36    | 5%   | 5.30   | .49     | 51        | .69    | .45      | .020 |          |    |     |
| Act BW      | Adj WW | WR  | Adj YW | YR   | Adj SC | Adj IMF | IMF Ratio | Adj RE | RE Ratio | ADG  | Docility |    |     |
| 65          | 733    | 106 | 1317   | 107  | 35.5   | 2.65    | 113       | 13.6   | 96       | 3.65 | 1        |    |     |



Mill Brae Benchmark 2049 — Lot 10

Flush Brothers | Lots 10-11

- Two heifer bulls who don't disappoint.
- Full of strong maternal genetics, their daughters will be keepers.
- Two power-packed bulls with potent pedigrees.



Mill Brae PW Blackcap 7193  
Dam of Lots 10 & 11

- This female is arguably one of Mark's favorites. She's got a presence you just don't miss.
- A massive Payweight daughter out of a foundation donor, Mill Brae FL Blackcap 5002, the maternal grandam of the popular Mill Brae Identified 4031.

**10** | Mill Brae Benchmark 2049 ANGUS6S  
BD: 02/22/22 ID: 2049 REG: +20421500

|                            |                             |      |        |
|----------------------------|-----------------------------|------|--------|
| #Connealy Confidence Plus  | #Connealy Confidence 0100   | \$M  | 65     |
| Mill Brae Benchmark 9016   | Elbanna of Conanga 1209     | \$W  | 83 3%  |
| #Mill Brae FP Joanie 3063  | #Connealy Final Product     | \$F  | 92 35% |
|                            | #Mill Brae FA Joanie 9263   | \$G  | 50     |
| #Basin Payweight 1682      | #Basin Payweight 006S       | \$B  | 143    |
| Mill Brae PW Blackcap 7193 | 21AR O Lass 7017            | \$C  | 250    |
| Mill Brae FL Blackcap 5002 | #Connealy Freightliner      | \$EN | -27    |
|                            | #Mill Brae SA Blackcap 3025 |      |        |

| HEIFER BULL | CED    | BW     | WW   | YW      | RADG    | DMI     | YH      |
|-------------|--------|--------|------|---------|---------|---------|---------|
|             | 10     | 20%    | 1.2  | 78 10%  | 141 10% | .28 25% | 1.60    |
|             | SC     | HP     | CEM  | Milk    | MW      | MH      | DOC     |
|             | 1.3    | 25%    | 9.2  | 11 20%  | 36 4%   | 68      | .1      |
|             | CLAW   | ANGLE  | PAP  | HS      | CW      | MARB    | RE      |
|             | .51    | .60    | 1.53 | .31 15% | 57 30%  | .69     | .60     |
|             | Act BW | Adj WW | WR   | Adj YW  | YR      | Adj SC  | Adj IMF |
|             | ET     | 707    | ET   | 1233    | ET      | 35.2    | 2.56    |
|             |        |        |      |         |         |         | 83      |
|             |        |        |      |         |         |         | 14.7    |
|             |        |        |      |         |         |         | 102     |
|             |        |        |      |         |         |         | 3.29    |
|             |        |        |      |         |         |         | 1       |

**11** | Mill Brae Benchmark 2046 ANGUS6S  
BD: 02/21/22 ID: 2046 REG: +20421499

|                            |                             |      |        |
|----------------------------|-----------------------------|------|--------|
| #Connealy Confidence Plus  | #Connealy Confidence 0100   | \$M  | 68 35% |
| Mill Brae Benchmark 9016   | Elbanna of Conanga 1209     | \$W  | 75 10% |
| #Mill Brae FP Joanie 3063  | #Connealy Final Product     | \$F  | 80     |
|                            | #Mill Brae FA Joanie 9263   | \$G  | 27     |
| #Basin Payweight 1682      | #Basin Payweight 006S       | \$B  | 107    |
| Mill Brae PW Blackcap 7193 | 21AR O Lass 7017            | \$C  | 207    |
| Mill Brae FL Blackcap 5002 | #Connealy Freightliner      | \$EN | -21    |
|                            | #Mill Brae SA Blackcap 3025 |      |        |

| HEIFER BULL | CED    | BW     | WW     | YW      | RADG    | DMI     | YH      |
|-------------|--------|--------|--------|---------|---------|---------|---------|
|             | 9      | 30%    | .6 35% | 72 20%  | 128 20% | .27 35% | 1.26    |
|             | SC     | HP     | CEM    | Milk    | MW      | MH      | DOC     |
|             | 1.0    | 12.4   | 5      | 30 25%  | 61      | .0      | 17      |
|             | CLAW   | ANGLE  | PAP    | HS      | CW      | MARB    | RE      |
|             | .53    | .48    | 1.45   | .45 35% | 46      | .18     | .51     |
|             | Act BW | Adj WW | WR     | Adj YW  | YR      | Adj SC  | Adj IMF |
|             | ET     | 689    | ET     | 1249    | ET      | 35.6    | 2.07    |
|             |        |        |        |         |         |         | 67      |
|             |        |        |        |         |         |         | 13.1    |
|             |        |        |        |         |         |         | 91      |
|             |        |        |        |         |         |         | 3.50    |
|             |        |        |        |         |         |         | 1       |

12

### Mill Brae Benchmark 2030

ANGUS6S



BD: 01/27/22

ID: 2030

REG: 20421493

#Connealy Confidence Plus  
**Mill Brae Benchmark 9016**

#Mill Brae FP Joanie 3063

#Connealy Confidence 0100  
Elbanna of Conanga 1209  
#Connealy Final Product  
#Mill Brae FA Joanie 9263  
HA Outside 3008

#HA Cowboy Up 5405  
**Mill Brae CU Joanie 9028**

Mill Brae CC&7 Joanie 2122

#HA Blackcap Lady 1602  
#SydGen C C & 7  
Mill Brae 1407 Joanie 5139

|      |     |     |
|------|-----|-----|
| \$M  | 71  | 30% |
| \$W  | 82  | 3%  |
| \$F  | 97  | 25% |
| \$G  | 60  | 30% |
| \$B  | 157 | 25% |
| \$C  | 275 | 20% |
| \$EN | -35 |     |



Mill Brae Benchmark 2030 — Lot 12

| HEIFER BULL WITH SUPERVISION |        |      |        |      |        |         |           |        |          |       |          |  |  |
|------------------------------|--------|------|--------|------|--------|---------|-----------|--------|----------|-------|----------|--|--|
| CED                          | BW     | WW   | YW     | RADG | DMI    | YH      |           |        |          |       |          |  |  |
| 6                            | 2.2    | 81   | 10%    | 139  | 10%    | .29     | 20%       | 1.03   | .9       | 15%   |          |  |  |
| SC                           | HP     | CEM  | Milk   | MW   | MH     | DOC     |           |        |          |       |          |  |  |
| .3                           | 14.7   | 20%  | 10     | 30%  | 36     | 4%      | 85        | 25%    | .6       | 30%   | 21       |  |  |
| CLAW                         | ANGLE  | PAP  | HS     | CW   | MARB   | RE      | FAT       |        |          |       |          |  |  |
| .54                          | .55    | 1.73 | .44    | 35%  | 59     | 25%     | .70       | .87    | 20%      | -.003 | 30%      |  |  |
| Act BW                       | Adj WW | WR   | Adj YW | YR   | Adj SC | Adj IMF | IMF Ratio | Adj RE | RE Ratio | ADG   | Docility |  |  |
| 84                           | 751    | 108  | 1266   | 103  | 35.8   | 2.15    | 91        | 14.3   | 101      | 3.22  | 1        |  |  |

13

### Mill Brae Benchmark 2006

ANGUS6S

BD: 01/09/22

ID: 2006

REG: 20421485

#Connealy Confidence Plus  
**Mill Brae Benchmark 9016**

#Mill Brae FP Joanie 3063

#Connealy Confidence 0100  
Elbanna of Conanga 1209  
#Connealy Final Product  
#Mill Brae FA Joanie 9263  
Bruin Breaking News 2201

Mill Brae Breaking News 7156  
**Mill Brae 7156 Blackcap 0028**

Mill Brae Com Blackcap 6169

Mill Brae PW Queen 5243  
#Connealy Comrade 1385  
#Mill Brae Obj Blackcap 9244

|      |     |    |
|------|-----|----|
| \$M  | 61  |    |
| \$W  | 83  | 3% |
| \$F  | 81  |    |
| \$G  | 50  |    |
| \$B  | 131 |    |
| \$C  | 231 |    |
| \$EN | -41 |    |

14

### Mill Brae Benchmark 2013

ANGUS6S

BD: 01/16/22

ID: 2013

REG: 20421488

#Connealy Confidence Plus  
**Mill Brae Benchmark 9016**

#Mill Brae FP Joanie 3063

#Connealy Confidence 0100  
Elbanna of Conanga 1209  
#Connealy Final Product  
#Mill Brae FA Joanie 9263  
Bruin Breaking News 2201

Mill Brae Breaking News 7156  
**Mill Brae 7156 Maid 0052**

Mill Brae 0123 Maid 4306

Mill Brae PW Queen 5243  
Mill Brae Final Answer 0123  
#Mill Brae 616 Maid 7043

|      |     |     |
|------|-----|-----|
| \$M  | 95  | 1%  |
| \$W  | 81  | 4%  |
| \$F  | 78  |     |
| \$G  | 44  |     |
| \$B  | 121 |     |
| \$C  | 252 |     |
| \$EN | -9  | 30% |

| HEIFER BULL |        |     |        |      |        |         |           |        |          |      |          |     |  |
|-------------|--------|-----|--------|------|--------|---------|-----------|--------|----------|------|----------|-----|--|
| CED         | BW     | WW  | YW     | RADG | DMI    | YH      |           |        |          |      |          |     |  |
| 12          | 10%    | -.9 | 15%    | 78   | 10%    | 138     | 10%       | .28    | 25%      | 1.51 | .7       | 35% |  |
| SC          | HP     | CEM | Milk   | MW   | MH     | DOC     |           |        |          |      |          |     |  |
| .7          | 12.2   | 8   | 36     | 4%   | 96     | 15%     | .7        | 20%    | 30       | 5%   |          |     |  |
| CLAW        | ANGLE  | PAP | HS     | CW   | MARB   | RE      | FAT       |        |          |      |          |     |  |
| .46         | 35%    | .62 | 3.86   | .39  | 25%    | 50      | .61       | .78    | 30%      | .046 |          |     |  |
| Act BW      | Adj WW | WR  | Adj YW | YR   | Adj SC | Adj IMF | IMF Ratio | Adj RE | RE Ratio | ADG  | Docility |     |  |
| 60          | 699    | 101 | 1273   | 104  | 34.8   | 2.03    | 86        | 15.5   | 109      | 3.59 | 1        |     |  |

15

### Mill Brae Benchmark 2008

ANGUS6S

BD: 01/10/22

ID: 2008

REG: 20421486

#Connealy Confidence Plus  
**Mill Brae Benchmark 9016**

#Mill Brae FP Joanie 3063

#Connealy Confidence 0100  
Elbanna of Conanga 1209  
#Connealy Final Product  
#Mill Brae FA Joanie 9263  
#Basin Payweight 1682

Mill Brae Pay Day 6075  
**Mill Brae PD Queen 0042**

Mill Brae 062 Queen 1026

Mill Brae UW Blackcap 0141  
#Connealy 044 062  
Mill Brae IF Queen 9153

|      |     |     |
|------|-----|-----|
| \$M  | 67  |     |
| \$W  | 78  | 10% |
| \$F  | 100 | 20% |
| \$G  | 45  |     |
| \$B  | 145 |     |
| \$C  | 255 |     |
| \$EN | -38 |     |

16

### Mill Brae Benchmark 2011

ANGUS6S

BD: 01/13/22

ID: 2011

REG: 20421487

#Connealy Confidence Plus  
**Mill Brae Benchmark 9016**

#Mill Brae FP Joanie 3063

#Connealy Confidence 0100  
Elbanna of Conanga 1209  
#Connealy Final Product  
#Mill Brae FA Joanie 9263  
#Basin Payweight 1682

Mill Brae Pay Day 6075  
**Mill Brae PD Karama 0086**

Mill Brae IF Karama 0193

Mill Brae UW Blackcap 0141  
#Mytty In Focus  
#Mill Brae 3508 Karama 1112

|      |     |     |
|------|-----|-----|
| \$M  | 83  | 10% |
| \$W  | 71  | 15% |
| \$F  | 63  |     |
| \$G  | 46  |     |
| \$B  | 110 |     |
| \$C  | 226 |     |
| \$EN | 6   | 10% |

| HEIFER BULL |        |      |        |      |        |         |           |        |          |      |          |  |  |
|-------------|--------|------|--------|------|--------|---------|-----------|--------|----------|------|----------|--|--|
| CED         | BW     | WW   | YW     | RADG | DMI    | YH      |           |        |          |      |          |  |  |
| 15          | 2%     | -2.6 | 2%     | 50   | 92     | .18     | .98       | .2     |          |      |          |  |  |
| SC          | HP     | CEM  | Milk   | MW   | MH     | DOC     |           |        |          |      |          |  |  |
| -.2         | 13.1   | 35%  | 10     | 30%  | 37     | 3%      | -19       | -.6    | 10       |      |          |  |  |
| CLAW        | ANGLE  | PAP  | HS     | CW   | MARB   | RE      | FAT       |        |          |      |          |  |  |
| .50         | .47    | .73  | .28    | 10%  | 31     | .57     | .64       | .049   |          |      |          |  |  |
| Act BW      | Adj WW | WR   | Adj YW | YR   | Adj SC | Adj IMF | IMF Ratio | Adj RE | RE Ratio | ADG  | Docility |  |  |
| 60          | 678    | 98   | 1155   | 94   | 32.9   | 2.25    | 96        | 14.1   | 99       | 2.98 | 1        |  |  |



Ref Sire | **E&B Plus One**

BD: 1/26/18

ID: 816

AGI GE-EPD  
REG: +\*19196960

#Connealy Confidence Plus  
Elbanna of Conanga 1209

Connealy Tobin  
Becka Gala of Conanga 8281  
#Connealy Consensus  
Elbasta of Conanga 9703

|      |     |     |
|------|-----|-----|
| \$M  | 71  | 25% |
| \$W  | 52  | 65% |
| \$F  | 83  | 60% |
| \$G  | 71  | 10% |
| \$B  | 154 | 30% |
| \$C  | 271 | 20% |
| \$EN | 1   | 15% |

#E&B Lady 1023 Precision 936  
E&B Lady 878 New Design 441

#GAR Precision 1680  
E&B 6807 Lady Traveler 61  
#Bon View New Design 878  
E&B 5706 Lady Arbitrator 824

| ANGUS | CED     | BW       | WW       | YW      | RADG    | DMI      | YH      |          |
|-------|---------|----------|----------|---------|---------|----------|---------|----------|
|       | 13 10%  | -0.8 15% | 53 75%   | 104 60% | .29 20% | 0.70 35% | .0 90%  |          |
|       | SC      | HP       | CEM      | Milk    | MW      | MH       | DOC     |          |
|       | .12 90% | 10.2 65% | 7 65%    | 24 65%  | 21 90%  | .2 60%   | 15 65%  |          |
| CLAW  | ANGLE   | PAP      | HS       | CW      | MARB    | RE       | FAT     |          |
| .43   | 25%     | .41 15%  | 2.97 90% | .35 15% | 29 85%  | .95 15%  | .85 15% | .007 45% |

Well balanced and complete maternal data package. Daughters are trouble free, right-sized females with excellent maternal design, Foot Quality and Hair Shedding ability.



Sire of Lots 17-18



Mill Brae Plus One 2054— Lot 17

Flush Brothers | Lots 17-18

- Second generation donor dam is a daughter of the the infamous, Mill Brae Obj Blackcap 9244, who proved to be one of the best females on the ranch.
- Dam is a full sister to Mill Brae Comrade 6184, who stands at Origin. He's known as the "sleep all night" calving ease bull.
- Maternal brothers to Mill Brae Steele Nikkel, Genex sire used in Angus on Dairy program.
- Docile heifer bulls with breed leading performance EPDs.
- Two full brothers backed by maternal legends.

**17** | **Mill Brae Plus One 2054** ANGUS65  
BD: 02/26/22 ID: 2054 REG: +20426702

|                                    |                              |                             |      |     |     |
|------------------------------------|------------------------------|-----------------------------|------|-----|-----|
| <b>E&amp;B Plus One</b>            | #Connealy Confidence Plus    | #Connealy Confidence 0100   | \$M  | 76  | 20% |
|                                    | #E&B Lady 1023 Precision 936 | Elbanna of Conanga 1209     | \$W  | 89  | 1%  |
| <b>Mill Brae Com Blackcap 6169</b> | #Connealy Comrade 1385       | #E&B 1680 Precision 1023    | \$F  | 80  |     |
|                                    | #Mill Brae Obj Blackcap 9244 | E&B Lady 878 New Design 441 | \$G  | 53  |     |
|                                    |                              | #Connealy Consensus 7229    | \$B  | 134 |     |
|                                    |                              | Happy Gee of Conanga 919    | \$C  | 250 |     |
|                                    | #S S Objective T510 OT26     | #Mill Brae RT Blackcap 8022 | \$EN | -27 |     |

| HEIFER BULL | CED    | BW      | WW      | YW      | RADG    | DMI     | YH        |        |          |      |          |
|-------------|--------|---------|---------|---------|---------|---------|-----------|--------|----------|------|----------|
|             | 12 10% | .1 25%  | 75 15%  | 135 15% | .30 15% | 1.08    | .5        |        |          |      |          |
|             | SC     | HP      | CEM     | Milk    | MW      | MH      | DOC       |        |          |      |          |
|             | .3     | 12.0    | 5       | 44 1%   | 57      | .3      | 26 15%    |        |          |      |          |
| CLAW        | ANGLE  | PAP     | HS      | CW      | MARB    | RE      | FAT       |        |          |      |          |
| .52         | .47    | .15 25% | .37 20% | 47      | .55     | .85 20% | -.011 20% |        |          |      |          |
| Act BW      | Adj WW | WR      | Adj YW  | YR      | Adj SC  | Adj IMF | IMF Ratio | Adj RE | RE Ratio | ADG  | Docility |
| ET          | 700    | ET      | 1241    | ET      | 33.3    | 3.51    | 114       | 14.4   | 100      | 3.38 | 1        |



Mill Brae Com Blackcap 6169  
Dam of Lots 17 & 18

**18** | Mill Brae Plus One 2052 ANGUS6S  
BD: 02/23/22 ID: 2052 REG: +20424475

|                                    |                              |                             |                   |
|------------------------------------|------------------------------|-----------------------------|-------------------|
| <b>E&amp;B Plus One</b>            | #Connealy Confidence Plus    | #Connealy Confidence 0100   | <b>\$M</b> 79 15% |
|                                    | #E&B Lady 1023 Precision 936 | Elbanna of Conanga 1209     | <b>\$W</b> 70 20% |
|                                    |                              | #E&B 1680 Precision 1023    | <b>\$F</b> 74     |
|                                    |                              | E&B Lady 878 New Design 441 | <b>\$G</b> 51     |
| <b>Mill Brae Com Blackcap 6169</b> | #Connealy Comrade 1385       | #Connealy Consensus 7229    | <b>\$B</b> 126    |
|                                    | #Mill Brae Obj Blackcap 9244 | Happy Gee of Conanga 919    | <b>\$C</b> 242    |
|                                    |                              | #S S Objective T510 OT26    | <b>\$EN</b> -16   |
|                                    |                              | #Mill Brae RT Blackcap 8022 |                   |

| HEIFER BULL | CED    | BW      | WW     | YW      | RADG    | DMI     | YH        |        |          |      |          |
|-------------|--------|---------|--------|---------|---------|---------|-----------|--------|----------|------|----------|
|             | 13 10% | .4 30%  | 69 30% | 121 30% | .28 25% | .76 30% | .6        |        |          |      |          |
|             | SC     | HP      | CEM    | Milk    | MW      | MH      | DOC       |        |          |      |          |
|             | -.2    | 12.5    | 12 15% | 27      | 53      | .4      | 36 1%     |        |          |      |          |
| CLAW        | ANGLE  | PAP     | HS     | CW      | MARB    | RE      | FAT       |        |          |      |          |
| .58         | .50    | .16 25% | .52    | 37      | .67     | .45     | .018      |        |          |      |          |
| Act BW      | Adj WW | WR      | Adj YW | YR      | Adj SC  | Adj IMF | IMF Ratio | Adj RE | RE Ratio | ADG  | Docility |
| ET          | 674    | ET      | 1248   | ET      | 35.2    | 3.27    | 107       | 13.3   | 92       | 3.59 | 1        |



Mill Brae Obj Blackcap 9244  
Maternal pathfinder grandam of Lots 17-18

**19** | Mill Brae Plus One 2016 ANGUS6S  
BD: 01/18/22 ID: 2016 REG: 20424259

|                                 |                              |                             |                    |
|---------------------------------|------------------------------|-----------------------------|--------------------|
| <b>E&amp;B Plus One</b>         | #Connealy Confidence Plus    | #Connealy Confidence 0100   | <b>\$M</b> 67      |
|                                 | #E&B Lady 1023 Precision 936 | Elbanna of Conanga 1209     | <b>\$W</b> 71 15%  |
|                                 |                              | #E&B 1680 Precision 1023    | <b>\$F</b> 74      |
|                                 |                              | E&B Lady 878 New Design 441 | <b>\$G</b> 55 35%  |
| <b>Mill Brae CU Joanie 9019</b> | #HA Cowboy Up 5405           | HA Outside 3008             | <b>\$B</b> 129     |
|                                 | Mill Brae CC&7 Joanie 2122   | #HA Blackcap Lady 1602      | <b>\$C</b> 234     |
|                                 |                              | #SydGen C C & 7             | <b>\$EN</b> -3 20% |
|                                 |                              | Mill Brae 1407 Joanie 5139  |                    |

| HEIFER BULL | CED     | BW      | WW     | YW      | RADG    | DMI     | YH        |        |          |      |          |
|-------------|---------|---------|--------|---------|---------|---------|-----------|--------|----------|------|----------|
|             | 14 4%   | -.9 15% | 66 35% | 127 25% | .27 35% | 1.74    | .0        |        |          |      |          |
|             | SC      | HP      | CEM    | Milk    | MW      | MH      | DOC       |        |          |      |          |
|             | 1.4 20% | 5.5     | 8      | 28 35%  | 26      | -.1     | 22 35%    |        |          |      |          |
| CLAW        | ANGLE   | PAP     | HS     | CW      | MARB    | RE      | FAT       |        |          |      |          |
| .47         | .60     | .54 35% | .50    | 39      | .69     | .67     | .015      |        |          |      |          |
| Act BW      | Adj WW  | WR      | Adj YW | YR      | Adj SC  | Adj IMF | IMF Ratio | Adj RE | RE Ratio | ADG  | Docility |
| 75          | 682     | 98      | 1231   | 100     | 37.6    | 2.35    | 100       | 15.2   | 107      | 3.43 | 1        |



Mill Brae Steele Nikkel  
Maternal brother to Lots 17-18



Sire of Lot 20

Ref Sire

### Crawford Guarantee 9137

BD: 2/19/19

ID: 9137

AGI  
GE-EPD  
REG #: \*19526770

|                                |                            |      |     |     |
|--------------------------------|----------------------------|------|-----|-----|
| #Basin Payweight 1682          | #Basin Payweight 006S      | \$M  | 72  | 20% |
| <b>Connealy Payraise</b>       | 21AR O Lass 7017           | \$W  | 75  | 10% |
| Pride Fair of Conanga 351      | #AAR Ten X 7008 SA         | \$F  | 110 | 15% |
|                                | Pride Fawn of Conanga 1512 | \$G  | 52  | 40% |
| #Connealy Armory               | #Connealy Arsenal 2174     | \$B  | 163 | 20% |
| <b>#Crawford Ms Armory D40</b> | #Ebba of Conanga 808       | \$C  | 283 | 15% |
| GAR New Day N2290              | #B/R New Day 454           | \$EN | -21 | 60% |
|                                | GAR Objective N906         |      |     |     |

|              |          |          |          |         |        |          |         |          |
|--------------|----------|----------|----------|---------|--------|----------|---------|----------|
| <b>ANGUS</b> | CE       | BW       | WW       | YW      | RADG   | DMI      | YH      |          |
|              | 12 15%   | -0.1 25% | 75 15%   | 149 5%  | .34 2% | 1.99 95% | .3 20%  |          |
|              | SC       | HP       | CEM      | Milk    | MW     | MH       | DOC     |          |
|              | 1.16 30% | 11 55%   | 7 65%    | 31 20%  | 59 50% | -.2 90%  | 31 4%   |          |
|              | CLAW     | ANGLE    | PAP      | HS      | CW     | MARB     | RE      | FAT      |
|              | .61 90%  | .53 75%  | 2.29 80% | .61 65% | 60 20% | .65 40%  | .57 50% | .009 45% |

A six-frame power bull with stunning phenotype. He has a herd bull presence with added length of body and is wide-topped and wide-based with true muscle expression and tremendous body depth. Pedigree, performance and phenotype - this bull is the epitome of multi-trait excellence.

20

### Mill Brae Guarantee K004

BD: 01/19/22

ID: K004

REG: 4088723



|                                    |                           |
|------------------------------------|---------------------------|
| Connealy Payraise                  | Basin Payweight 1682      |
| <b>Crawford Guarantee 9137</b>     | Pride Fair Of Conanga 351 |
| Crawford Ms Armory D40             | Connealy Armory           |
|                                    | G A R New Day N2290       |
| TJ Main Event 503B                 | Mr NLC Upgrade U8676      |
| <b>Hanel Miss Main Event G9085</b> | TJ Miss New Day U14       |
| Hanel Miss Lib A3009               | Sydden Liberty GA 8627    |
|                                    | Hanel Miss Legend W9122   |

|                    |          |          |          |           |          |         |           |        |          |      |          |
|--------------------|----------|----------|----------|-----------|----------|---------|-----------|--------|----------|------|----------|
| <b>HEIFER BULL</b> | CE       | BW       | WW       | YW        | ADG      |         |           |        |          |      |          |
|                    | 15.5 20% | -1.6 20% | 84.1 25% | 144.3 10% | .38 3%   |         |           |        |          |      |          |
| MCE                | Milk     | MWW      | Stay     | DOC       | CW       | YG      |           |        |          |      |          |
| 6.1                | 26.9 20% | 69 20%   | 12.4     | 13.8 30%  | 58.2 3%  | -0.06   |           |        |          |      |          |
| Marb               | BF       | REA      | Shr      | API       | TI       |         |           |        |          |      |          |
| .49 25%            | -0.014   | .71      | N/A      | 142.4 35% | 88.6 20% |         |           |        |          |      |          |
| Act BW             | Adj WW   | WR       | Adj YW   | YR        | Adj SC   | Adj IMF | IMF Ratio | Adj RE | RE Ratio | ADG  | Dodility |
| 70                 | 799      | 100      | 1350     | 100       | 37.6     | 2.00    | 100       | 16.1   | 100      | 3.45 | 2        |

1/4 SM 3/4 AN

- The sole SimAngus bull in the 2023 offering.
- Dam is a beautiful Maine Event daughter with a picture perfect udder. She's one of Mark's favorite cows.
- He's been a standout since the day he hit the ground.
- A heifer bull who won't sacrifice pounds.
- A tank with breed-leading EPDs that will add a shot of heterosis without sacrificing carcass quality.
- Breed-leading birth to yearling spread with exceptional foot quality.



Mill Brae Guarantee K004 — Lot 20



# BARRETT <sup>B</sup><sub>C</sub> CATTLE

REGISTERED ANGUS & CUSTOM A.I.

Gene, 785-224-8509  
Anna, 785-224-8536  
Payden, 785-318-2004

2563 Douglas Rd.  
Grantville, KS 66429  
bcoffice@barrettcattle.com  
barrettcattle.com

Thank you for taking the time to consider our 2023 bull offering. We value your trust in us, as well as in our cattle.

We truly are a family-run operation, making our living from the cattle industry. Through selling bulls and in our custom AI business, we have been blessed to be surrounded and work for some of the best people in the country.

Several years ago, we made the decision to change our bull development program which led to selling 18-month-old bulls. The availability of pasture and the opportunity for Payden to come back to the operation allowed us to move in this direction.

In prior years, we sold our bulls with the Fink family. We are thankful for Galen and Lori's years of support and for the 30+-year friendship of our families.

Looking ahead, in the new-to-us sale location, we will be selling bulls alongside friends, and fellow Angus breeders, Mark, Janice and Taylor Nikkel at their Mill Brae Ranch location near Maple Hill, Kansas. We would like to thank the Nikkel family for the opportunity to sell our bulls alongside theirs at their facility.

## Our Cowherd

We AI and sell bulls to some of the best cattle producers in this country, and listen to what is most important in their operations. We have always put these basic fundamentals into our own program.



For decades, our selection has been, first and foremost, for maternal traits. We are extremely demanding of our cows and expect them to perform within our operation with no excuses: fertility (a 45-day calving window); mothering ability; udder quality, soundness of feet and legs, and disposition.



Our cows have been enrolled in the American Angus Association's Maternal Plus program since 2013, one year after the program began. Every female culled from the herd is submitted, along with the reason we culled her. Having this history at hand is an important piece in our decision-making.

## To view the bulls

Bulls will be available for viewing at our place near Grantville, Kansas, until March 20th.



If you are not able to attend the sale in person, you can preview the bulls and bid on DVAuction, over the phone, or we would be more than happy to assist you with absentee purchases. Updates, including featured bulls and females, will be posted on our website in the announcements section.

We hope you are able to come by and view the bulls, as well as our cowherd. Our doors are always open!

Again, thank you for your trust and friendship, we look forward to seeing you.

*Gene, Anna, Payden & Ella*

# Barrett Cattle Bull Development

The bulls are weaned at approximately 200 days of age, with no creep, and are dry-lotted for 2 to 3 weeks before being turned out on brome pasture. This would be the only time in their lives that they are dry-lotted.

Approximately May 1, they are hauled to native grass until the first part of October. At that time, they are brought closer to home and run on a fescue mix pasture with a restricted supplementation mix of rolled corn and dried distiller's grain, along with limited brome hay, usually starting in mid-December.

**There is no doubt we could achieve heavier weaning and yearling weights, but we have chosen not to push the bulls and instead let them develop and grow at a slower pace. Our personal experience is that this will provide our customers with bulls that will last longer.**

To ensure fertility, all bulls must pass a complete BSE at 13- to 14-months of age, and then again just prior to the sale by Dr's. Karl and Adam Lukert.

We are confident in our genetics and have always retained ½ semen interest on every bull we sell. Buyers will take full possession and 100% salvage.

Since 2015, Shannon and Zan Ardery and family of Rocking A Ranch, Mullinville, Kansas, have been buying select females from

both our program and Finks, and serve as cooperators in raising bulls for us.

We create the matings on these females and go through their cows several times a year.

On the bulls that were born at their ranch, you will note an 'A' on the bull number. These bulls have been run with ours since weaning in mid-March. We value the Ardery's friendship and their knowledge in the cattle industry from both the commercial and registered standpoint.

## Vaccination Program

**2-month-old calves:** Inforce 3, Ultrabac 7

**3 month:** Bovishield Gold One Shot

**Pre-weaning:** Bovishield Gold One Shot, Ultrabac 7, Dectomax

### Yearling Bulls:

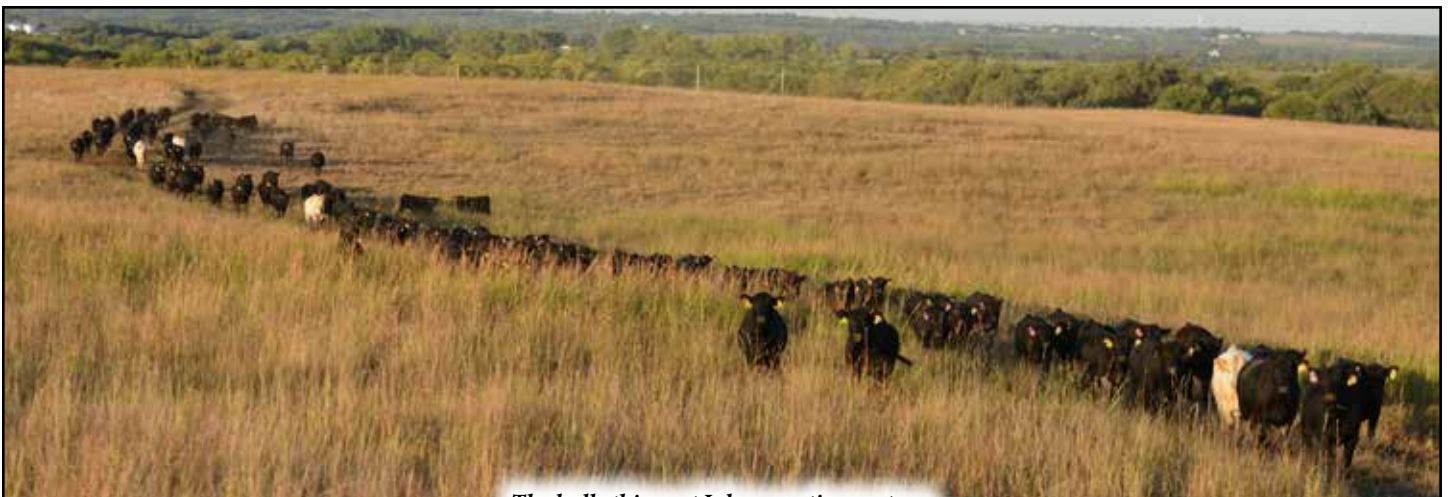
- Complete BSE
- Synanthic 22.5% Oral Drench
- Clean up II Pour-On
- Vira Shield 6 + VL5 HB

### 18-months-old:

- Complete BSE
- ViraShield 6+ VL5 HB
- Dectomax Pour-on

**\* All bulls have been tested and are negative for P1 BVD.**

**\* EPDs current as of 1/12/23.**



*The bulls this past July on native pasture.*

Ref Sire

# SAV Rainfall 6846

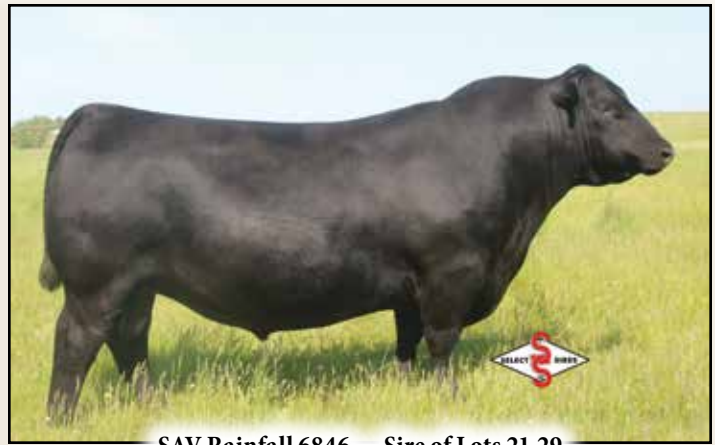
BD: 1/9/16

ID: 6846



REG #: +\*18578963

|   |   |  |
|---|---|--|
| <b>Coleman Charlo 0256</b><br>Bohi Abigale 6014 | OCC Paxton 730P<br>OCC Focus 813F<br>OCC Blackbird 736K<br>Sitz Traveler 8180<br>SAV Abigale 6062<br>Sitz Traveler 8180 | <b>\$M</b> 85 4%<br><b>\$W</b> 58 50%<br><b>\$F</b> 60 90%<br><b>\$G</b> 49 45%<br><b>\$B</b> 109 80%<br><b>\$C</b> 226 60%<br><b>\$EN</b> 0 15% |
| <b>SAV Blackcap May 4136</b><br>SAV May 2397    | SAV 8180 Traveler 004<br>Boyd Forever Lady 8003<br>SAF 598 Bando 5175<br>SAV May 7238                                   |  |



SAV Rainfall 6846 — Sire of Lots 21-29

|              |             |              |            |             |             |             |            |
|--------------|-------------|--------------|------------|-------------|-------------|-------------|------------|
| <b>ANGUS</b> | <b>CED</b>  | <b>BW</b>    | <b>WW</b>  | <b>YW</b>   | <b>RADG</b> | <b>DMI</b>  | <b>YH</b>  |
|              | 7           | 45%          | 0.4        | 35%         | 56          | 65%         | 107        |
|              | 55%         | .28          | 25%        | 0.78        | 40%         | -.4         | 95%        |
|              | <b>SC</b>   | <b>HP</b>    | <b>CEM</b> | <b>Milk</b> | <b>MW</b>   | <b>MH</b>   | <b>DOC</b> |
|              | .91         | 45%          | 14.2       | 20%         | 6           | 70%         | 27         |
|              | 45%         | 20%          | 6          | 70%         | 27          | 45%         | 20         |
|              | 90%         | -.4          | 95%        | 12          | 75%         |             |            |
|              | <b>CLAW</b> | <b>ANGLE</b> | <b>PAP</b> | <b>HS</b>   | <b>CW</b>   | <b>MARB</b> | <b>RE</b>  |
|              | .34         | 4%           | .39        | 10%         | 1.03        | 50%         | .35        |
|              | 15%         | 16           | 95%        | .58         | 45%         | .54         | 55%        |
|              |             |              |            |             |             |             | .004       |
|              |             |              |            |             |             |             | 40%        |

We calved out our first set of Rainfall daughters this past fall and they have met all of our expectations of what we look for in a female: Fertility. Fleshing ability. Udder quality. Mothering ability. Absolutely beautiful females.

21

# Barrett 1105 654 RF

BD: 08/30/21

ID: 1105



REG #: 20504270

|  |   |  |
|--|---|--|
| <b>SA V Rainfall 6846</b><br>SA V Blackcap May 4136            | Coleman Charlo 0256<br>O C C Paxton 730P<br>Bohi Abigale 6014<br>SA V 8180 Traveler 004<br>SA V May 2397                | <b>\$M</b> 84 10%<br><b>\$W</b> 77 10%<br><b>\$F</b> 71 80%<br><b>\$G</b> 56 35%<br><b>\$B</b> 127 65%<br><b>\$C</b> 249 45%<br><b>\$EN</b> -3 20% |
| <b>BARRETT Miss 654 4004 PW</b><br>Barretts Miss 4004 2526 BAR | Basin Payweight 1682<br>Basin Payweight 0065<br>21AR O Lass 7017<br>B A R Ext Traveler 205<br>Finks Miss 2526 9078 5175 |  |



Barrett 1105 654 RF — Lot 21

|                    |             |              |            |             |             |             |            |
|--------------------|-------------|--------------|------------|-------------|-------------|-------------|------------|
| <b>HEIFER BULL</b> | <b>CED</b>  | <b>BW</b>    | <b>WW</b>  | <b>YW</b>   | <b>RADG</b> | <b>DMI</b>  | <b>YH</b>  |
|                    | 7           | 45%          | -.6        | 15%         | 66          | 35%         | 114        |
|                    | 40%         | 13.4         | 30%        | 7           | 65%         | 31          | 20%        |
|                    | 20%         | 21           | 95%        | -.5         | 95%         | 14          | 70%        |
|                    | <b>SC</b>   | <b>HP</b>    | <b>CEM</b> | <b>Milk</b> | <b>MW</b>   | <b>MH</b>   | <b>DOC</b> |
|                    | 1.0         | 40%          | 13.4       | 30%         | 7           | 65%         | 31         |
|                    | 20%         | 21           | 95%        | -.5         | 95%         | 14          | 70%        |
|                    | <b>CLAW</b> | <b>ANGLE</b> | <b>PAP</b> | <b>HS</b>   | <b>CW</b>   | <b>MARB</b> | <b>RE</b>  |
|                    | .48         | 45%          | .54        | 80%         | 1.68        | 60%         | .26        |
|                    |             |              |            |             |             |             |            |
|                    |             |              |            |             |             |             | .010       |
|                    |             |              |            |             |             |             | 50%        |

22

# Barrett 1110 772 RF

BD: 08/29/21

ID: 1110



REG #: 20504268

|  |   |   |
|--|---|---|
| <b>SA V Rainfall 6846</b><br>SA V Blackcap May 4136            | Coleman Charlo 0256<br>O C C Paxton 730P<br>Bohi Abigale 6014<br>SA V 8180 Traveler 004<br>SA V May 2397                | <b>\$M</b> 87 4%<br><b>\$W</b> 78 10%<br><b>\$F</b> 66 90%<br><b>\$G</b> 50 50%<br><b>\$B</b> 116 80%<br><b>\$C</b> 237 55%<br><b>\$EN</b> -3 20% |
| <b>Barrett Miss 772 4004 PW</b><br>Barretts Miss 4004 2526 BAR | Basin Payweight 1682<br>Basin Payweight 0065<br>21AR O Lass 7017<br>B A R Ext Traveler 205<br>Finks Miss 2526 9078 5175 |   |



Barrett Miss 772 4004 PW  
Dam of Lot 22

|                    |             |              |            |             |             |             |            |
|--------------------|-------------|--------------|------------|-------------|-------------|-------------|------------|
| <b>HEIFER BULL</b> | <b>CED</b>  | <b>BW</b>    | <b>WW</b>  | <b>YW</b>   | <b>RADG</b> | <b>DMI</b>  | <b>YH</b>  |
|                    | 15          | 2%           | -3.0       | 1%          | 60          | 55%         | 107        |
|                    | 55%         | .22          | 75%        | 1.19        | 60%         | -.3         | 95%        |
|                    | <b>SC</b>   | <b>HP</b>    | <b>CEM</b> | <b>Milk</b> | <b>MW</b>   | <b>MH</b>   | <b>DOC</b> |
|                    | .4          | 80%          | 9.6        | 80%         | 13          | 10%         | 37         |
|                    | 3%          | 15           | 95%        | -.5         | 95%         | 18          | 55%        |
|                    | <b>CLAW</b> | <b>ANGLE</b> | <b>PAP</b> | <b>HS</b>   | <b>CW</b>   | <b>MARB</b> | <b>RE</b>  |
|                    | .34         | 4%           | .36        | 5%          | 3.22        | 90%         | .25        |
|                    |             |              |            |             |             |             |            |
|                    |             |              |            |             |             |             | -.009      |
|                    |             |              |            |             |             |             | 25%        |

23

# Barrett 1109 771 RF

BD: 09/02/21

ID: 1109



REG #: 20504269

|  |   |  |
|--|---|--|
| <b>SA V Rainfall 6846</b><br>SA V Blackcap May 4136            | Coleman Charlo 0256<br>O C C Paxton 730P<br>Bohi Abigale 6014<br>SA V 8180 Traveler 004<br>SA V May 2397                | <b>\$M</b> 86 4%<br><b>\$W</b> 77 10%<br><b>\$F</b> 90 40%<br><b>\$G</b> 41 70%<br><b>\$B</b> 130 65%<br><b>\$C</b> 255 40%<br><b>\$EN</b> -21 65% |
| <b>Barrett Miss 771 4004 PW</b><br>Barretts Miss 4004 2526 BAR | Basin Payweight 1682<br>Basin Payweight 0065<br>21AR O Lass 7017<br>B A R Ext Traveler 205<br>Finks Miss 2526 9078 5175 |  |

|  |   |  |
|--|---|--|
| <b>SA V Rainfall 6846</b><br>SA V Blackcap May 4136            | Coleman Charlo 0256<br>O C C Paxton 730P<br>Bohi Abigale 6014<br>SA V 8180 Traveler 004<br>SA V May 2397              | <b>\$M</b> 74 20%<br><b>\$W</b> 72 15%<br><b>\$F</b> 63 95%<br><b>\$G</b> 38 75%<br><b>\$B</b> 101 95%<br><b>\$C</b> 205 85%<br><b>\$EN</b> -4 20% |
| <b>BARRETT Miss 264 4004 NW</b><br>Barretts Miss 4004 2526 BAR | SA V Net Worth 4200<br>SA V 8180 Traveler 004<br>SA V May 2410<br>B A R Ext Traveler 205<br>Finks Miss 2526 9078 5175 |  |

|                                     |             |              |            |             |             |             |            |
|-------------------------------------|-------------|--------------|------------|-------------|-------------|-------------|------------|
| <b>HEIFER BULL WITH SUPERVISION</b> | <b>CED</b>  | <b>BW</b>    | <b>WW</b>  | <b>YW</b>   | <b>RADG</b> | <b>DMI</b>  | <b>YH</b>  |
|                                     | 8           | 35%          | .7         | 40%         | 70          | 25%         | 130        |
|                                     | 20%         | .30          | 15%        | 1.29        | 70%         | .0          | 95%        |
|                                     | <b>SC</b>   | <b>HP</b>    | <b>CEM</b> | <b>Milk</b> | <b>MW</b>   | <b>MH</b>   | <b>DOC</b> |
|                                     | 1.6         | 10%          | 16.2       | 10%         | 10          | 30%         | 36         |
|                                     | 4%          | 55           | 65%        | -.1         | 90%         | 21          | 40%        |
|                                     | <b>CLAW</b> | <b>ANGLE</b> | <b>PAP</b> | <b>HS</b>   | <b>CW</b>   | <b>MARB</b> | <b>RE</b>  |
|                                     | .41         | 20%          | .45        | 30%         | 2.34        | 75%         | .37        |
|                                     |             |              |            |             |             |             |            |
|                                     |             |              |            |             |             |             | .004       |
|                                     |             |              |            |             |             |             | 40%        |

24

# Barrett 1101 264 RF

BD: 08/28/21

ID: 1101



REG #: 20504283

|  |   |  |
|--|---|--|
| <b>SA V Rainfall 6846</b><br>SA V Blackcap May 4136            | Coleman Charlo 0256<br>O C C Paxton 730P<br>Bohi Abigale 6014<br>SA V 8180 Traveler 004<br>SA V May 2397              | <b>\$M</b> 74 20%<br><b>\$W</b> 72 15%<br><b>\$F</b> 63 95%<br><b>\$G</b> 38 75%<br><b>\$B</b> 101 95%<br><b>\$C</b> 205 85%<br><b>\$EN</b> -4 20% |
| <b>BARRETT Miss 264 4004 NW</b><br>Barretts Miss 4004 2526 BAR | SA V Net Worth 4200<br>SA V 8180 Traveler 004<br>SA V May 2410<br>B A R Ext Traveler 205<br>Finks Miss 2526 9078 5175 |  |

|  |   |  |
|--|---|--|
| <b>SA V Rainfall 6846</b><br>SA V Blackcap May 4136            | Coleman Charlo 0256<br>O C C Paxton 730P<br>Bohi Abigale 6014<br>SA V 8180 Traveler 004<br>SA V May 2397              | <b>\$M</b> 74 20%<br><b>\$W</b> 72 15%<br><b>\$F</b> 63 95%<br><b>\$G</b> 38 75%<br><b>\$B</b> 101 95%<br><b>\$C</b> 205 85%<br><b>\$EN</b> -4 20% |
| <b>BARRETT Miss 264 4004 NW</b><br>Barretts Miss 4004 2526 BAR | SA V Net Worth 4200<br>SA V 8180 Traveler 004<br>SA V May 2410<br>B A R Ext Traveler 205<br>Finks Miss 2526 9078 5175 |  |



Full sister to Lot 21  
and typical of our first-calf Rainfall daughters

## 25 | Barrett 1104 456 RF

BD: 08/29/21 ID: 1104 REG #: 20504277

|                                 |                           |                             |  |     |    |     |     |    |     |     |    |     |     |    |     |     |     |     |     |     |     |      |     |     |
|---------------------------------|---------------------------|-----------------------------|--|-----|----|-----|-----|----|-----|-----|----|-----|-----|----|-----|-----|-----|-----|-----|-----|-----|------|-----|-----|
| <b>SA V Rainfall 6846</b>       | Coleman Charlo 0256       | O C C Paxton 730P           | <table border="1"> <tr><td>\$M</td><td>71</td><td>30%</td></tr> <tr><td>\$W</td><td>65</td><td>30%</td></tr> <tr><td>\$F</td><td>85</td><td>50%</td></tr> <tr><td>\$G</td><td>20</td><td>95%</td></tr> <tr><td>\$B</td><td>104</td><td>90%</td></tr> <tr><td>\$C</td><td>206</td><td>85%</td></tr> <tr><td>\$EN</td><td>-23</td><td>70%</td></tr> </table> | \$M | 71 | 30% | \$W | 65 | 30% | \$F | 85 | 50% | \$G | 20 | 95% | \$B | 104 | 90% | \$C | 206 | 85% | \$EN | -23 | 70% |
|                                 | \$M                       | 71                          |  | 30% |    |     |     |    |     |     |    |     |     |    |     |     |     |     |     |     |     |      |     |     |
|                                 | \$W                       | 65                          |  | 30% |    |     |     |    |     |     |    |     |     |    |     |     |     |     |     |     |     |      |     |     |
| \$F                             | 85                        | 50%                         |  |     |    |     |     |    |     |     |    |     |     |    |     |     |     |     |     |     |     |      |     |     |
| \$G                             | 20                        | 95%                         |  |     |    |     |     |    |     |     |    |     |     |    |     |     |     |     |     |     |     |      |     |     |
| \$B                             | 104                       | 90%                         |  |     |    |     |     |    |     |     |    |     |     |    |     |     |     |     |     |     |     |      |     |     |
| \$C                             | 206                       | 85%                         |  |     |    |     |     |    |     |     |    |     |     |    |     |     |     |     |     |     |     |      |     |     |
| \$EN                            | -23                       | 70%                         |  |     |    |     |     |    |     |     |    |     |     |    |     |     |     |     |     |     |     |      |     |     |
| S A V Blackcap May 4136         | Bohi Abigale 6014         |                             |  |     |    |     |     |    |     |     |    |     |     |    |     |     |     |     |     |     |     |      |     |     |
| S A V May 2397                  | S A V 8180 Traveler 004   |                             |  |     |    |     |     |    |     |     |    |     |     |    |     |     |     |     |     |     |     |      |     |     |
| S A V Resource 1441             | S A V May 2397            | Rito 707 of Ideal 3407 7075 |  |     |    |     |     |    |     |     |    |     |     |    |     |     |     |     |     |     |     |      |     |     |
| <b>BARRETT Miss 456 4004 RE</b> | S A V Blackcap May 4136   | S A V Ext Traveler 205      |  |     |    |     |     |    |     |     |    |     |     |    |     |     |     |     |     |     |     |      |     |     |
| Barretts Miss 4004 2526 BAR     | Finks Miss 2526 9078 5175 |                             |  |     |    |     |     |    |     |     |    |     |     |    |     |     |     |     |     |     |     |      |     |     |

|                                     |              |            |            |             |             |            |            |     |     |      |      |     |     |       |     |
|-------------------------------------|--------------|------------|------------|-------------|-------------|------------|------------|-----|-----|------|------|-----|-----|-------|-----|
| <b>HEIFER BULL WITH SUPERVISION</b> | <b>CED</b>   | <b>BW</b>  | <b>WW</b>  | <b>YW</b>   | <b>RADG</b> | <b>DMI</b> | <b>YH</b>  |     |     |      |      |     |     |       |     |
|                                     | 8            | 35%        | .7         | 40%         | 66          | 35%        | 126        | 25% | .26 | 45%  | 1.75 | 90% | .3  | 75%   |     |
|                                     | <b>SC</b>    | <b>HP</b>  | <b>CEM</b> | <b>Milk</b> | <b>MW</b>   | <b>MH</b>  | <b>DOC</b> |     |     |      |      |     |     |       |     |
| .9                                  | 45%          | 11.9       | 50%        | 9           | 40%         | 29         | 30%        | 66  | 50% | .3   | 60%  | 16  | 65% |       |     |
| <b>CLAW</b>                         | <b>ANGLE</b> | <b>PAP</b> | <b>HS</b>  | <b>CW</b>   | <b>MARB</b> | <b>RE</b>  | <b>FAT</b> |     |     |      |      |     |     |       |     |
| .25                                 | 1%           | .43        | 25%        | 1.97        | 70%         | .39        | 25%        | 48  | 50% | -.17 | 95%  | .93 | 15% | -.002 | 30% |

## 26 | Barrett 1107 760 RF

BD: 08/25/21 ID: 1107 REG #: 20504266

|                                  |                            |                             |  |     |    |     |     |    |     |     |    |     |     |    |     |     |     |     |     |     |     |      |     |     |
|----------------------------------|----------------------------|-----------------------------|--|-----|----|-----|-----|----|-----|-----|----|-----|-----|----|-----|-----|-----|-----|-----|-----|-----|------|-----|-----|
| <b>SA V Rainfall 6846</b>        | Coleman Charlo 0256        | O C C Paxton 730P           | <table border="1"> <tr><td>\$M</td><td>83</td><td>10%</td></tr> <tr><td>\$W</td><td>70</td><td>20%</td></tr> <tr><td>\$F</td><td>77</td><td>70%</td></tr> <tr><td>\$G</td><td>46</td><td>60%</td></tr> <tr><td>\$B</td><td>122</td><td>75%</td></tr> <tr><td>\$C</td><td>241</td><td>50%</td></tr> <tr><td>\$EN</td><td>-27</td><td>80%</td></tr> </table> | \$M | 83 | 10% | \$W | 70 | 20% | \$F | 77 | 70% | \$G | 46 | 60% | \$B | 122 | 75% | \$C | 241 | 50% | \$EN | -27 | 80% |
|                                  | \$M                        | 83                          |  | 10% |    |     |     |    |     |     |    |     |     |    |     |     |     |     |     |     |     |      |     |     |
|                                  | \$W                        | 70                          |  | 20% |    |     |     |    |     |     |    |     |     |    |     |     |     |     |     |     |     |      |     |     |
| \$F                              | 77                         | 70%                         |  |     |    |     |     |    |     |     |    |     |     |    |     |     |     |     |     |     |     |      |     |     |
| \$G                              | 46                         | 60%                         |  |     |    |     |     |    |     |     |    |     |     |    |     |     |     |     |     |     |     |      |     |     |
| \$B                              | 122                        | 75%                         |  |     |    |     |     |    |     |     |    |     |     |    |     |     |     |     |     |     |     |      |     |     |
| \$C                              | 241                        | 50%                         |  |     |    |     |     |    |     |     |    |     |     |    |     |     |     |     |     |     |     |      |     |     |
| \$EN                             | -27                        | 80%                         |  |     |    |     |     |    |     |     |    |     |     |    |     |     |     |     |     |     |     |      |     |     |
| S A V Blackcap May 4136          | Bohi Abigale 6014          |                             |  |     |    |     |     |    |     |     |    |     |     |    |     |     |     |     |     |     |     |      |     |     |
| S A V May 2397                   | S A V 8180 Traveler 004    |                             |  |     |    |     |     |    |     |     |    |     |     |    |     |     |     |     |     |     |     |      |     |     |
| Nichols Extra K205               | S A V May 2397             | Nichols Extra H6            |  |     |    |     |     |    |     |     |    |     |     |    |     |     |     |     |     |     |     |      |     |     |
| <b>Barrett Rita 760 419 K205</b> | Nichols Black Heiress F346 | Nichols Black Heiress F346  |  |     |    |     |     |    |     |     |    |     |     |    |     |     |     |     |     |     |     |      |     |     |
| BARRETT Rita 419 157 CR          | Cole Creek Cedar Ridge 1V  | BARRETT Rita 157 of 1709 GN |  |     |    |     |     |    |     |     |    |     |     |    |     |     |     |     |     |     |     |      |     |     |

|             |              |            |             |             |             |            |            |     |     |      |     |     |     |      |     |
|-------------|--------------|------------|-------------|-------------|-------------|------------|------------|-----|-----|------|-----|-----|-----|------|-----|
| <b>CED</b>  | <b>BW</b>    | <b>WW</b>  | <b>YW</b>   | <b>RADG</b> | <b>DMI</b>  | <b>YH</b>  |            |     |     |      |     |     |     |      |     |
| 2           | 85%          | 3.3        | 90%         | 78          | 10%         | 131        | 20%        | .26 | 45% | 1.05 | 50% | .4  | 65% |      |     |
| <b>SC</b>   | <b>HP</b>    | <b>CEM</b> | <b>Milk</b> | <b>MW</b>   | <b>MH</b>   | <b>DOC</b> |            |     |     |      |     |     |     |      |     |
| .9          | 55%          | 15.8       | 10%         | 9           | 40%         | 27         | 45%        | 77  | 35% | .3   | 60% | 28  | 10% |      |     |
| <b>CLAW</b> | <b>ANGLE</b> | <b>PAP</b> | <b>HS</b>   | <b>CW</b>   | <b>MARB</b> | <b>RE</b>  | <b>FAT</b> |     |     |      |     |     |     |      |     |
| .40         | 15%          | .46        | 35%         | 2.13        | 70%         | .22        | 10%        | 45  | 60% | .48  | 65% | .67 | 45% | .011 | 50% |

## 27 | Barrett 1102 326 RF

BD: 08/25/21 ID: 1102 REG #: 20504278

|                                   |                           |                        |  |     |    |     |     |    |     |     |    |     |     |    |     |     |     |     |     |     |     |      |     |     |
|-----------------------------------|---------------------------|------------------------|--|-----|----|-----|-----|----|-----|-----|----|-----|-----|----|-----|-----|-----|-----|-----|-----|-----|------|-----|-----|
| <b>SA V Rainfall 6846</b>         | Coleman Charlo 0256       | O C C Paxton 730P      | <table border="1"> <tr><td>\$M</td><td>65</td><td>45%</td></tr> <tr><td>\$W</td><td>59</td><td>45%</td></tr> <tr><td>\$F</td><td>59</td><td>95%</td></tr> <tr><td>\$G</td><td>50</td><td>50%</td></tr> <tr><td>\$B</td><td>108</td><td>90%</td></tr> <tr><td>\$C</td><td>205</td><td>85%</td></tr> <tr><td>\$EN</td><td>-13</td><td>40%</td></tr> </table> | \$M | 65 | 45% | \$W | 59 | 45% | \$F | 59 | 95% | \$G | 50 | 50% | \$B | 108 | 90% | \$C | 205 | 85% | \$EN | -13 | 40% |
|                                   | \$M                       | 65                     |  | 45% |    |     |     |    |     |     |    |     |     |    |     |     |     |     |     |     |     |      |     |     |
|                                   | \$W                       | 59                     |  | 45% |    |     |     |    |     |     |    |     |     |    |     |     |     |     |     |     |     |      |     |     |
| \$F                               | 59                        | 95%                    |  |     |    |     |     |    |     |     |    |     |     |    |     |     |     |     |     |     |     |      |     |     |
| \$G                               | 50                        | 50%                    |  |     |    |     |     |    |     |     |    |     |     |    |     |     |     |     |     |     |     |      |     |     |
| \$B                               | 108                       | 90%                    |  |     |    |     |     |    |     |     |    |     |     |    |     |     |     |     |     |     |     |      |     |     |
| \$C                               | 205                       | 85%                    |  |     |    |     |     |    |     |     |    |     |     |    |     |     |     |     |     |     |     |      |     |     |
| \$EN                              | -13                       | 40%                    |  |     |    |     |     |    |     |     |    |     |     |    |     |     |     |     |     |     |     |      |     |     |
| S A V Blackcap May 4136           | Bohi Abigale 6014         |                        |  |     |    |     |     |    |     |     |    |     |     |    |     |     |     |     |     |     |     |      |     |     |
| S A V May 2397                    | S A V 8180 Traveler 004   |                        |  |     |    |     |     |    |     |     |    |     |     |    |     |     |     |     |     |     |     |      |     |     |
| Emulation N Bar 5522              | S A V May 2397            | Emulation 31           |  |     |    |     |     |    |     |     |    |     |     |    |     |     |     |     |     |     |     |      |     |     |
| <b>BARRETT Miss 326 4004 5522</b> | Ankony 8F78 Lass 8F275    | B A R Ext Traveler 205 |  |     |    |     |     |    |     |     |    |     |     |    |     |     |     |     |     |     |     |      |     |     |
| Barretts Miss 4004 2526 BAR       | Finks Miss 2526 9078 5175 |                        |  |     |    |     |     |    |     |     |    |     |     |    |     |     |     |     |     |     |     |      |     |     |

|                    |              |            |            |             |             |            |            |     |     |     |     |     |     |       |     |
|--------------------|--------------|------------|------------|-------------|-------------|------------|------------|-----|-----|-----|-----|-----|-----|-------|-----|
| <b>HEIFER BULL</b> | <b>CED</b>   | <b>BW</b>  | <b>WW</b>  | <b>YW</b>   | <b>RADG</b> | <b>DMI</b> | <b>YH</b>  |     |     |     |     |     |     |       |     |
|                    | 13           | 10%        | -2.6       | 2%          | 50          | 85%        | 90         | 80% | .21 | 80% | .93 | 40% | .1  | 90%   |     |
|                    | <b>SC</b>    | <b>HP</b>  | <b>CEM</b> | <b>Milk</b> | <b>MW</b>   | <b>MH</b>  | <b>DOC</b> |     |     |     |     |     |     |       |     |
| .2                 | 90%          | 9          | 85%        | 10          | 30%         | 31         | 20%        | 43  | 75% | .0  | 85% | 16  | 65% |       |     |
| <b>CLAW</b>        | <b>ANGLE</b> | <b>PAP</b> | <b>HS</b>  | <b>CW</b>   | <b>MARB</b> | <b>RE</b>  | <b>FAT</b> |     |     |     |     |     |     |       |     |
| .23                | 1%           | .35        | 4%         | .66         | 35%         | .37        | 20%        | 26  | 95% | .62 | 50% | .38 | 85% | -.007 | 25% |

## 28 | Barrett 1111 890 RF

BD: 09/25/21 ID: 1111 REG #: 20504260

|                                  |                            |                            |  |     |    |     |     |    |     |     |    |     |     |    |     |     |     |     |     |     |     |      |   |     |
|----------------------------------|----------------------------|----------------------------|--|-----|----|-----|-----|----|-----|-----|----|-----|-----|----|-----|-----|-----|-----|-----|-----|-----|------|---|-----|
| <b>SA V Rainfall 6846</b>        | Coleman Charlo 0256        | O C C Paxton 730P          | <table border="1"> <tr><td>\$M</td><td>81</td><td>10%</td></tr> <tr><td>\$W</td><td>67</td><td>25%</td></tr> <tr><td>\$F</td><td>79</td><td>65%</td></tr> <tr><td>\$G</td><td>28</td><td>95%</td></tr> <tr><td>\$B</td><td>107</td><td>90%</td></tr> <tr><td>\$C</td><td>220</td><td>75%</td></tr> <tr><td>\$EN</td><td>1</td><td>15%</td></tr> </table> | \$M | 81 | 10% | \$W | 67 | 25% | \$F | 79 | 65% | \$G | 28 | 95% | \$B | 107 | 90% | \$C | 220 | 75% | \$EN | 1 | 15% |
|                                  | \$M                        | 81                         |  | 10% |    |     |     |    |     |     |    |     |     |    |     |     |     |     |     |     |     |      |   |     |
|                                  | \$W                        | 67                         |  | 25% |    |     |     |    |     |     |    |     |     |    |     |     |     |     |     |     |     |      |   |     |
| \$F                              | 79                         | 65%                        |  |     |    |     |     |    |     |     |    |     |     |    |     |     |     |     |     |     |     |      |   |     |
| \$G                              | 28                         | 95%                        |  |     |    |     |     |    |     |     |    |     |     |    |     |     |     |     |     |     |     |      |   |     |
| \$B                              | 107                        | 90%                        |  |     |    |     |     |    |     |     |    |     |     |    |     |     |     |     |     |     |     |      |   |     |
| \$C                              | 220                        | 75%                        |  |     |    |     |     |    |     |     |    |     |     |    |     |     |     |     |     |     |     |      |   |     |
| \$EN                             | 1                          | 15%                        |  |     |    |     |     |    |     |     |    |     |     |    |     |     |     |     |     |     |     |      |   |     |
| S A V Blackcap May 4136          | Bohi Abigale 6014          |                            |  |     |    |     |     |    |     |     |    |     |     |    |     |     |     |     |     |     |     |      |   |     |
| S A V May 2397                   | S A V 8180 Traveler 004    |                            |  |     |    |     |     |    |     |     |    |     |     |    |     |     |     |     |     |     |     |      |   |     |
| Nichols Extra K205               | S A V May 2397             | Nichols Extra H6           |  |     |    |     |     |    |     |     |    |     |     |    |     |     |     |     |     |     |     |      |   |     |
| <b>BARRETT Miss 890 414 K205</b> | Nichols Black Heiress F346 | Nichols Black Heiress F346 |  |     |    |     |     |    |     |     |    |     |     |    |     |     |     |     |     |     |     |      |   |     |
| BARRETT Miss 414 258 CR          | Cole Creek Cedar Ridge 1V  | BARRETT Miss 258 1303 NW   |  |     |    |     |     |    |     |     |    |     |     |    |     |     |     |     |     |     |     |      |   |     |

|             |              |            |             |             |             |            |            |     |     |      |     |     |     |      |     |
|-------------|--------------|------------|-------------|-------------|-------------|------------|------------|-----|-----|------|-----|-----|-----|------|-----|
| <b>CED</b>  | <b>BW</b>    | <b>WW</b>  | <b>YW</b>   | <b>RADG</b> | <b>DMI</b>  | <b>YH</b>  |            |     |     |      |     |     |     |      |     |
| 6           | 55%          | 1.7        | 65%         | 64          | 45%         | 112        | 45%        | .24 | 60% | 1.00 | 45% | .1  | 90% |      |     |
| <b>SC</b>   | <b>HP</b>    | <b>CEM</b> | <b>Milk</b> | <b>MW</b>   | <b>MH</b>   | <b>DOC</b> |            |     |     |      |     |     |     |      |     |
| .8          | 60%          | 16         | 10%         | 8           | 55%         | 27         | 45%        | 18  | 95% | -.3  | 95% | -4  | 95% |      |     |
| <b>CLAW</b> | <b>ANGLE</b> | <b>PAP</b> | <b>HS</b>   | <b>CW</b>   | <b>MARB</b> | <b>RE</b>  | <b>FAT</b> |     |     |      |     |     |     |      |     |
| .44         | 25%          | .61        | 95%         | .36         | 30%         | .48        | 40%        | 40  | 70% | .06  | 95% | .76 | 30% | .000 | 35% |

ET; CAB; HB; HBW:

## 29 | Barrett 1103 455 RF

BD: 08/29/21 ID: 1103 REG #: 20504279

|                                    |                           |                             |   |     |    |     |     |    |     |     |    |     |     |    |     |     |    |     |     |     |     |      |   |     |
|------------------------------------|---------------------------|-----------------------------|---|-----|----|-----|-----|----|-----|-----|----|-----|-----|----|-----|-----|----|-----|-----|-----|-----|------|---|-----|
| <b>SA V Rainfall 6846</b>          | Coleman Charlo 0256       | O C C Paxton 730P           | <table border="1"> <tr><td>\$M</td><td>84</td><td>10%</td></tr> <tr><td>\$W</td><td>55</td><td>55%</td></tr> <tr><td>\$F</td><td>47</td><td>95%</td></tr> <tr><td>\$G</td><td>43</td><td>65%</td></tr> <tr><td>\$B</td><td>90</td><td>95%</td></tr> <tr><td>\$C</td><td>201</td><td>90%</td></tr> <tr><td>\$EN</td><td>5</td><td>10%</td></tr> </table> | \$M | 84 | 10% | \$W | 55 | 55% | \$F | 47 | 95% | \$G | 43 | 65% | \$B | 90 | 95% | \$C | 201 | 90% | \$EN | 5 | 10% |
|                                    | \$M                       | 84                          |   | 10% |    |     |     |    |     |     |    |     |     |    |     |     |    |     |     |     |     |      |   |     |
|                                    | \$W                       | 55                          |   | 55% |    |     |     |    |     |     |    |     |     |    |     |     |    |     |     |     |     |      |   |     |
| \$F                                | 47                        | 95%                         |   |     |    |     |     |    |     |     |    |     |     |    |     |     |    |     |     |     |     |      |   |     |
| \$G                                | 43                        | 65%                         |   |     |    |     |     |    |     |     |    |     |     |    |     |     |    |     |     |     |     |      |   |     |
| \$B                                | 90                        | 95%                         |   |     |    |     |     |    |     |     |    |     |     |    |     |     |    |     |     |     |     |      |   |     |
| \$C                                | 201                       | 90%                         |   |     |    |     |     |    |     |     |    |     |     |    |     |     |    |     |     |     |     |      |   |     |
| \$EN                               | 5                         | 10%                         |   |     |    |     |     |    |     |     |    |     |     |    |     |     |    |     |     |     |     |      |   |     |
| S A V Blackcap May 4136            | Bohi Abigale 6014         |                             |   |     |    |     |     |    |     |     |    |     |     |    |     |     |    |     |     |     |     |      |   |     |
| S A V May 2397                     | S A V 8180 Traveler 004   |                             |   |     |    |     |     |    |     |     |    |     |     |    |     |     |    |     |     |     |     |      |   |     |
| S A V Resource 1441                | S A V May 2397            | Rito 707 of Ideal 3407 7075 |   |     |    |     |     |    |     |     |    |     |     |    |     |     |    |     |     |     |     |      |   |     |
| <b>BARRETT Miss 455 of 4004 RE</b> | S A V Blackcap May 4136   | S A V Ext Traveler 205      |   |     |    |     |     |    |     |     |    |     |     |    |     |     |    |     |     |     |     |      |   |     |
| Barretts Miss 4004 2526 BAR        | Finks Miss 2526 9078 5175 |                             |   |     |    |     |     |    |     |     |    |     |     |    |     |     |    |     |     |     |     |      |   |     |

|                    |              |            |            |             |             |            |            |     |     |     |     |     |     |       |     |
|--------------------|--------------|------------|------------|-------------|-------------|------------|------------|-----|-----|-----|-----|-----|-----|-------|-----|
| <b>HEIFER BULL</b> | <b>CED</b>   | <b>BW</b>  | <b>WW</b>  | <b>YW</b>   | <b>RADG</b> | <b>DMI</b> | <b>YH</b>  |     |     |     |     |     |     |       |     |
|                    | 11           | 15%        | -1.6       | 5%          | 44          | 90%        | 76         | 95% | .19 | 90% | .40 | 15% | -.4 | 95%   |     |
|                    | <b>SC</b>    | <b>HP</b>  | <b>CEM</b> | <b>Milk</b> | <b>MW</b>   | <b>MH</b>  | <b>DOC</b> |     |     |     |     |     |     |       |     |
| 1.4                | 20%          | 15.6       | 10%        | 3           | 90%         | 29         | 30%        | 6   | 95% | -.7 | 95% | 15  | 65% |       |     |
| <b>CLAW</b>        | <b>ANGLE</b> | <b>PAP</b> | <b>HS</b>  | <b>CW</b>   | <b>MARB</b> | <b>RE</b>  | <b>FAT</b> |     |     |     |     |     |     |       |     |
| .31                | 2%           | .40        | 15%        | .24         | 30%         | .21        | 5%         | 11  | 95% | .33 | 80% | .80 | 25% | -.015 | 20% |



Barretts Miss 4004 2526 BAR  
Pictured at 11 years of age

4004 is, without a doubt, one of the best cows we have ever raised. She never missed, no matter what bull we bred her to.

You will see her influence in many of the bulls in this sale. She is the dam of Walt, Overdrive, Super Duty, and Iron Mike; and the maternal grandam to lots: 21, 22, 23, 24, 27, 29; and maternal great-grandam to lots 48, 92, 99 and 102.

A beautiful, near-perfect Angus female, she did everything right.

Ref Sire

# E&B Plus One

BD: 1/26/18

ID: 816



REG #: +\*19196960

## Connealy Confidence Plus

Connealy Confidence 0100  
Elbanna of Conanga 1209

Connealy Tobin  
Becka Gala of Conanga 8281  
Connealy Consensus  
Elbasta of Conanga 9703  
GAR Precision 1680  
E&b 6807 Lady Traveler 61  
Bon View New Design 878  
E&b 5706 Lady Arbitrator 824

|      |     |     |
|------|-----|-----|
| \$M  | 71  | 25% |
| \$W  | 52  | 65% |
| \$F  | 83  | 60% |
| \$G  | 71  | 10% |
| \$B  | 154 | 30% |
| \$C  | 271 | 20% |
| \$EN | 1   | 15% |

## E&B Lady 1023 Precision 936

E&B 1680 Precision 1023  
E&B Lady 878 New Design 441



| CEW  | BW    | WW   | YW   | RADG | DMI  | YH  |     |     |     |      |     |     |     |      |     |
|------|-------|------|------|------|------|-----|-----|-----|-----|------|-----|-----|-----|------|-----|
| 13   | 10%   | -0.8 | 15%  | 53   | 75%  | 104 | 60% | .29 | 20% | 0.70 | 35% | .0  | 90% |      |     |
| SC   | HP    | CEM  | Milk | MW   | MH   | DOC |     |     |     |      |     |     |     |      |     |
| .12  | 90%   | 10.2 | 65%  | 7    | 65%  | 24  | 65% | 21  | 90% | .2   | 60% | 15  | 65% |      |     |
| CLAW | ANGLE | PAP  | HS   | CW   | MARB | RE  | FAT |     |     |      |     |     |     |      |     |
| .43  | 25%   | .41  | 15%  | 2.97 | 90%  | .35 | 15% | 29  | 85% | .95  | 15% | .85 | 15% | .007 | 45% |

This is a very uniform, solid, set of bulls sired by Plus One. He has the proven calving ease we were after in the right kind of package. The heifer mates to these bulls are beautiful and what you want to see in an Angus female, we are excited to calve them out this fall. Some of his first daughters in production that we've seen are very attractive long-bodied females with picture-perfect udders.



E&B Plus One — Sire of Lots 30-64

30

## Barrett 1134 606 P1

BD: 08/21/21

ID: 1134



REG #: 20505856

## E&B Plus One

Connealy Confidence Plus  
E&B Lady 1023 Precision 936

Connealy Confidence 0100  
Elbanna of Conanga 1209  
E&B 1680 Precision 1023  
E&B Lady 878 New Design 441  
Rito 707 of Ideal 3407 7075  
S A V Blackcap May 4136  
G A R Predestined  
Barretts 1709 of 1204 5522

|      |     |     |
|------|-----|-----|
| \$M  | 77  | 15% |
| \$W  | 70  | 20% |
| \$F  | 82  | 55% |
| \$G  | 40  | 70% |
| \$B  | 123 | 70% |
| \$C  | 237 | 55% |
| \$EN | -20 | 60% |

## BARRETT Rita 606 5608 RE

S A V Resource 1441  
Barretts Rita 5608 1709 Pre



| CEW  | BW    | WW   | YW   | RADG | DMI  | YH  |     |     |     |      |     |     |     |      |     |
|------|-------|------|------|------|------|-----|-----|-----|-----|------|-----|-----|-----|------|-----|
| 17   | 1%    | -3.4 | 1%   | 63   | 45%  | 119 | 35% | .26 | 45% | 1.50 | 80% | .2  | 85% |      |     |
| SC   | HP    | CEM  | Milk | MW   | MH   | DOC |     |     |     |      |     |     |     |      |     |
| .1   | 90%   | 14.1 | 25%  | 14   | 4%   | 31  | 20% | 57  | 60% | .1   | 75% | 23  | 30% |      |     |
| CLAW | ANGLE | PAP  | HS   | CW   | MARB | RE  | FAT |     |     |      |     |     |     |      |     |
| .39  | 15%   | .49  | 55%  | .83  | 40%  | .75 | 90% | 47  | 55% | .34  | 80% | .87 | 20% | .029 | 75% |



Barrett 1134 606 P1 — Lot 30

31

## Barrett 1122 463 P1

BD: 09/01/21

ID: 1122



REG #: 20505890

## E&B Plus One

Connealy Confidence Plus  
E&B Lady 1023 Precision 936

Connealy Confidence 0100  
Elbanna of Conanga 1209  
E&B 1680 Precision 1023  
E&B Lady 878 New Design 441  
Rito 707 of Ideal 3407 7075  
S A V Blackcap May 4136  
N Bar Prime Time D806  
Barretts Pride 4104 288 BAR

|      |     |     |
|------|-----|-----|
| \$M  | 79  | 15% |
| \$W  | 61  | 40% |
| \$F  | 65  | 90% |
| \$G  | 51  | 45% |
| \$B  | 116 | 80% |
| \$C  | 229 | 65% |
| \$EN | -10 | 30% |

## BARRETT Pride 463 4106 RE

S A V Resource 1441  
Barretts Pride 4106 4104 PT

| CEW  | BW    | WW   | YW   | RADG | DMI  | YH  |     |     |     |      |     |     |     |      |     |
|------|-------|------|------|------|------|-----|-----|-----|-----|------|-----|-----|-----|------|-----|
| 12   | 10%   | 1.7  | 65%  | 71   | 25%  | 122 | 30% | .21 | 80% | 1.63 | 90% | .1  | 90% |      |     |
| SC   | HP    | CEM  | Milk | MW   | MH   | DOC |     |     |     |      |     |     |     |      |     |
| .8   | 55%   | 13.7 | 30%  | 10   | 30%  | 17  | 95% | 54  | 65% | -.1  | 90% | 6   | 95% |      |     |
| CLAW | ANGLE | PAP  | HS   | CW   | MARB | RE  | FAT |     |     |      |     |     |     |      |     |
| .30  | 2%    | .33  | 2%   | 2.85 | 85%  | .70 | 80% | 35  | 80% | .70  | 40% | .52 | 65% | .050 | 95% |



32

## Barrett 1114 348 P1

BD: 08/28/21

ID: 1114



REG #: 20505902

## E&B Plus One

Connealy Confidence Plus  
E&B Lady 1023 Precision 936

Connealy Confidence 0100  
Elbanna of Conanga 1209  
E&B 1680 Precision 1023  
E&B Lady 878 New Design 441  
Garret's Nationwide 8001  
Barretts Miss 4004 2526 BAR  
Sinclair Net Present Value  
Barretts Rita 1307 2805 423

|      |     |     |
|------|-----|-----|
| \$M  | 48  | 90% |
| \$W  | 54  | 60% |
| \$F  | 101 | 20% |
| \$G  | 37  | 80% |
| \$B  | 138 | 50% |
| \$C  | 227 | 65% |
| \$EN | -28 | 80% |

## BARRETT Rita 348 911 0966

Barretts Iron Mike 0966  
Barretts Rita 911 1307 NPV



| CEW  | BW    | WW  | YW   | RADG | DMI  | YH  |     |     |     |      |     |     |     |      |     |
|------|-------|-----|------|------|------|-----|-----|-----|-----|------|-----|-----|-----|------|-----|
| 9    | 30%   | 1.2 | 50%  | 63   | 45%  | 122 | 30% | .30 | 15% | 1.29 | 70% | .5  | 55% |      |     |
| SC   | HP    | CEM | Milk | MW   | MH   | DOC |     |     |     |      |     |     |     |      |     |
| .8   | 55%   | 12  | 50%  | 9    | 40%  | 24  | 70% | 84  | 30% | .6   | 30% | 15  | 65% |      |     |
| CLAW | ANGLE | PAP | HS   | CW   | MARB | RE  | FAT |     |     |      |     |     |     |      |     |
| .48  | 45%   | .56 | 85%  | 3.28 | 90%  | .47 | 40% | 51  | 45% | .27  | 85% | .74 | 35% | .004 | 40% |



Barrett Rita 348 911 1307 NPV — Dam of Lot 32

Typical of our Barretts Iron Mike females. Calving interval of 8 @ 359.





Barrett 1130 520 P1 — Lot 39



Barrett 1132 520 P1 — Lot 41



Dam of Lots 39-43.

520 is one of the handful of donors that we are flushing. She would be as deep-bodied, feminine, sound, easy-fleshing, and fertile as any female we have ever raised. Her sons should create absolutely beautiful females.

39

**Barrett 1130 520 P1**

BD: 08/30/21

ID: 1130

REG #: 20505880



E&B Plus One

Connealy Confidence Plus  
E&B Lady 1023 Precision 936

Connealy Confidence 0100  
Elbanna of Conanga 1209  
E&B 1680 Precision 1023  
E&B Lady 878 New Design 441  
Emulation N Bar 5522  
Barretts Miss 4004 2526 BAR  
S A V Final Answer 0035  
Barretts Miss 054 4407 423

|      |     |     |
|------|-----|-----|
| \$M  | 93  | 2%  |
| \$W  | 67  | 25% |
| \$F  | 62  | 95% |
| \$G  | 57  | 35% |
| \$B  | 119 | 75% |
| \$C  | 247 | 45% |
| \$EN | 10  | 4%  |

BARRETT Miss 520 of 236 WT

BARRETT Miss 236 054 FA

| HEIFER BULL | CED   | BW  | WW  | YW   | RADG | DMI | YH  |     |     |     |     |     |     |      |     |
|-------------|-------|-----|-----|------|------|-----|-----|-----|-----|-----|-----|-----|-----|------|-----|
|             | 9     | 30% | -.4 | 20%  | 58   | 60% | 90  | 80% | .17 | 95% | .65 | 25% | .2  | 85%  |     |
|             | SC    | HP  | CEM | Milk | MW   | MH  | DOC |     |     |     |     |     |     |      |     |
|             | .3    | 85% | 16  | 10%  | 5    | 80% | 25  | 60% | -1  | 95% | -.3 | 95% | 15  | 65%  |     |
| CLAW        | ANGLE | PAP | HS  | CW   | MARB | RE  | FAT |     |     |     |     |     |     |      |     |
| .45         | 30%   | .55 | 80% | 1.39 | 55%  | .56 | 55% | 28  | 90% | .65 | 45% | .89 | 15% | .008 | 45% |

40

**Barrett 1128 520 P1**

BD: 09/20/21

ID: 1128

REG #: 20507214



E&B Plus One

Connealy Confidence Plus  
E&B Lady 1023 Precision 936

Connealy Confidence 0100  
Elbanna of Conanga 1209  
E&B 1680 Precision 1023  
E&B Lady 878 New Design 441  
Emulation N Bar 5522  
Barretts Miss 4004 2526 BAR  
S A V Final Answer 0035  
Barretts Miss 054 4407 423

|      |     |     |
|------|-----|-----|
| \$M  | 80  | 10% |
| \$W  | 66  | 25% |
| \$F  | 75  | 75% |
| \$G  | 60  | 30% |
| \$B  | 135 | 55% |
| \$C  | 255 | 40% |
| \$EN | 0   | 15% |

BARRETT Miss 520 of 236 WT

BARRETT Miss 236 054 FA

| HEIFER BULL | CED   | BW  | WW   | YW   | RADG | DMI | YH  |     |     |     |      |     |     |      |     |
|-------------|-------|-----|------|------|------|-----|-----|-----|-----|-----|------|-----|-----|------|-----|
|             | 10    | 20% | .4   | 30%  | 58   | 60% | 105 | 60% | .21 | 80% | 1.33 | 70% | -.1 | 95%  |     |
|             | SC    | HP  | CEM  | Milk | MW   | MH  | DOC |     |     |     |      |     |     |      |     |
|             | .2    | 90% | 13.2 | 35%  | 7    | 65% | 31  | 20% | 14  | 95% | -.3  | 95% | 7   | 90%  |     |
| CLAW        | ANGLE | PAP | HS   | CW   | MARB | RE  | FAT |     |     |     |      |     |     |      |     |
| .42         | 20%   | .51 | 65%  | 1.79 | 65%  | .47 | 40% | 40  | 70% | .87 | 25%  | .56 | 60% | .043 | 90% |

41

**Barrett 1132 520 P1**

BD: 08/30/21

ID: 1132

REG #: 20505884



E&B Plus One

Connealy Confidence Plus  
E&B Lady 1023 Precision 936

Connealy Confidence 0100  
Elbanna of Conanga 1209  
E&B 1680 Precision 1023  
E&B Lady 878 New Design 441  
Emulation N Bar 5522  
Barretts Miss 4004 2526 BAR  
S A V Final Answer 0035  
Barretts Miss 054 4407 423

|      |     |     |
|------|-----|-----|
| \$M  | 95  | 1%  |
| \$W  | 66  | 25% |
| \$F  | 74  | 75% |
| \$G  | 48  | 55% |
| \$B  | 122 | 75% |
| \$C  | 253 | 40% |
| \$EN | 10  | 4%  |

BARRETT Miss 520 of 236 WT

BARRETT Miss 236 054 FA

| HEIFER BULL | CED   | BW  | WW   | YW   | RADG | DMI | YH  |     |     |     |     |     |     |       |     |
|-------------|-------|-----|------|------|------|-----|-----|-----|-----|-----|-----|-----|-----|-------|-----|
|             | 10    | 20% | -1.3 | 10%  | 55   | 70% | 94  | 75% | .21 | 80% | .43 | 15% | .0  | 95%   |     |
|             | SC    | HP  | CEM  | Milk | MW   | MH  | DOC |     |     |     |     |     |     |       |     |
|             | .2    | 90% | 17.9 | 2%   | 7    | 65% | 27  | 45% | -9  | 95% | -.4 | 95% | 13  | 75%   |     |
| CLAW        | ANGLE | PAP | HS   | CW   | MARB | RE  | FAT |     |     |     |     |     |     |       |     |
| .48         | 45%   | .54 | 80%  | 1.57 | 60%  | .16 | 3%  | 32  | 85% | .41 | 75% | .97 | 10% | -.011 | 20% |

42

**Barrett 1131 520 P1**

BD: 08/31/21

ID: 1131

REG #: 20505882



E&B Plus One

Connealy Confidence Plus  
E&B Lady 1023 Precision 936

Connealy Confidence 0100  
Elbanna of Conanga 1209  
E&B 1680 Precision 1023  
E&B Lady 878 New Design 441  
Emulation N Bar 5522  
Barretts Miss 4004 2526 BAR  
S A V Final Answer 0035  
Barretts Miss 054 4407 423

|      |     |     |
|------|-----|-----|
| \$M  | 80  | 10% |
| \$W  | 61  | 40% |
| \$F  | 62  | 95% |
| \$G  | 66  | 20% |
| \$B  | 128 | 65% |
| \$C  | 246 | 45% |
| \$EN | 8   | 5%  |

BARRETT Miss 520 of 236 WT

BARRETT Miss 236 054 FA

| HEIFER BULL | CED   | BW  | WW   | YW   | RADG | DMI | YH  |     |     |     |     |      |     |       |     |
|-------------|-------|-----|------|------|------|-----|-----|-----|-----|-----|-----|------|-----|-------|-----|
|             | 11    | 15% | -1.1 | 10%  | 49   | 85% | 82  | 90% | .18 | 95% | .49 | 15%  | -.3 | 95%   |     |
|             | SC    | HP  | CEM  | Milk | MW   | MH  | DOC |     |     |     |     |      |     |       |     |
|             | -.3   | 95% | 13.5 | 30%  | 10   | 30% | 29  | 30% | 0   | 95% | -.4 | 95%  | 11  | 80%   |     |
| CLAW        | ANGLE | PAP | HS   | CW   | MARB | RE  | FAT |     |     |     |     |      |     |       |     |
| .50         | 50%   | .51 | 65%  | 4.19 | 95%  | .18 | 4%  | 24  | 95% | .80 | 30% | 1.00 | 10% | -.003 | 30% |

43

**Barrett 1129 520 P1**

BD: 09/04/21

ID: 1129

REG #: 20505887



E&B Plus One

Connealy Confidence Plus  
E&B Lady 1023 Precision 936

Connealy Confidence 0100  
Elbanna of Conanga 1209  
E&B 1680 Precision 1023  
E&B Lady 878 New Design 441  
Emulation N Bar 5522  
Barretts Miss 4004 2526 BAR  
S A V Final Answer 0035  
Barretts Miss 054 4407 423

|      |     |     |
|------|-----|-----|
| \$M  | 66  | 40% |
| \$W  | 53  | 65% |
| \$F  | 67  | 90% |
| \$G  | 63  | 25% |
| \$B  | 129 | 65% |
| \$C  | 233 | 60% |
| \$EN | -2  | 15% |

BARRETT Miss 520 of 236 WT

BARRETT Miss 236 054 FA

| HEIFER BULL | CED   | BW  | WW   | YW   | RADG | DMI | YH  |     |     |     |     |     |     |      |     |
|-------------|-------|-----|------|------|------|-----|-----|-----|-----|-----|-----|-----|-----|------|-----|
|             | 8     | 35% | .4   | 30%  | 51   | 80% | 87  | 85% | .21 | 80% | .42 | 15% | -.1 | 95%  |     |
|             | SC    | HP  | CEM  | Milk | MW   | MH  | DOC |     |     |     |     |     |     |      |     |
|             | .3    | 85% | 13.9 | 25%  | 11   | 20% | 25  | 60% | 27  | 90% | -.1 | 90% | 8   | 90%  |     |
| CLAW        | ANGLE | PAP | HS   | CW   | MARB | RE  | FAT |     |     |     |     |     |     |      |     |
| .52         | 60%   | .56 | 85%  | 2.83 | 85%  | .42 | 30% | 26  | 95% | .82 | 30% | .73 | 35% | .006 | 45% |







**60**

**Barrett 1149A 948A P1**



BD: 09/14/21 ID: 1149 REG #: 20505478

**E&B Plus One**

|                             |                             |                           |
|-----------------------------|-----------------------------|---------------------------|
| Connealy Confidence Plus    | Connealy Confidence 0100    | <b>\$M</b> <b>91</b> 2%   |
| E&B Lady 1023 Precision 936 | Elbanna of Conanga 1209     | <b>\$W</b> <b>65</b> 30%  |
|                             | E&B 1680 Precision 1023     | <b>\$F</b> <b>78</b> 65%  |
|                             | E&B Lady 878 New Design 441 | <b>\$G</b> <b>54</b> 40%  |
| Sinclair Emulation XXP      | N Bar Emulation EXT         | <b>\$B</b> <b>133</b> 60% |
| <b>RAR Miss 948A 41 XXP</b> | N Bar Primrose Y3051        | <b>\$C</b> <b>264</b> 30% |
| RAR Fink Miss 41 1323 Res   | S A V Resource 1441         | <b>\$EN</b> <b>2</b> 10%  |
|                             | Fink Miss 1323 9408 BI      |                           |

|                                     |             |              |            |             |             |             |            |
|-------------------------------------|-------------|--------------|------------|-------------|-------------|-------------|------------|
| <b>HEIFER BULL WITH SUPERVISION</b> | <b>CE</b>   | <b>BW</b>    | <b>WW</b>  | <b>YW</b>   | <b>RADG</b> | <b>DMI</b>  | <b>YH</b>  |
|                                     | 7           | 45%          | .5         | 35%         | 57          | 65%         | 100        |
|                                     | 65%         | .25          | 50%        | .32         | 10%         | .4          | 65%        |
|                                     | <b>SC</b>   | <b>HP</b>    | <b>CEM</b> | <b>Milk</b> | <b>MW</b>   | <b>MH</b>   | <b>DOC</b> |
|                                     | 1.6         | 15%          | 12.7       | 40%         | 8           | 55%         | 30         |
|                                     | 25%         | 12           | 95%        | .1          | 75%         | 18          | 55%        |
|                                     | <b>CLAW</b> | <b>ANGLE</b> | <b>PAP</b> | <b>HS</b>   | <b>CW</b>   | <b>MARB</b> | <b>RE</b>  |
|                                     | .33         | 3%           | .37        | 10%         | 2.02        | 70%         | .40        |
|                                     | 25%         | 36           | 80%        | .70         | 40%         | .51         | 70%        |
|                                     |             |              |            |             |             | .008        | 45%        |

**61**

**Barrett 1123 464 P1**



BD: 08/30/21 ID: 1123 REG #: 20505889

**E&B Plus One**

|                                 |                             |                           |
|---------------------------------|-----------------------------|---------------------------|
| Connealy Confidence Plus        | Connealy Confidence 0100    | <b>\$M</b> <b>81</b> 10%  |
| E&B Lady 1023 Precision 936     | Elbanna of Conanga 1209     | <b>\$W</b> <b>55</b> 55%  |
|                                 | E&B 1680 Precision 1023     | <b>\$F</b> <b>66</b> 90%  |
|                                 | E&B Lady 878 New Design 441 | <b>\$G</b> <b>43</b> 65%  |
| S A V Resource 1441             | Rito 707 of Ideal 3407 7075 | <b>\$B</b> <b>109</b> 90% |
| <b>BARRETT Rita 464 4306 RE</b> | S A V Blackcap May 4136     | <b>\$C</b> <b>222</b> 70% |
| Barretts Rita 4306 5404 PT      | N Bar Prime Time D806       | <b>\$EN</b> <b>2</b> 10%  |
|                                 | Barretts Rita 5404 2209 616 |                           |

|                    |             |              |            |             |             |             |            |
|--------------------|-------------|--------------|------------|-------------|-------------|-------------|------------|
| <b>HEIFER BULL</b> | <b>CE</b>   | <b>BW</b>    | <b>WW</b>  | <b>YW</b>   | <b>RADG</b> | <b>DMI</b>  | <b>YH</b>  |
|                    | 10          | 20%          | -.8        | 15%         | 55          | 70%         | 102        |
|                    | 65%         | .24          | 60%        | 1.04        | 50%         | .1          | 90%        |
|                    | <b>SC</b>   | <b>HP</b>    | <b>CEM</b> | <b>Milk</b> | <b>MW</b>   | <b>MH</b>   | <b>DOC</b> |
|                    | .0          | 95%          | 14.9       | 15%         | 10          | 30%         | 22         |
|                    | 80%         | 22           | 95%        | .0          | 85%         | 16          | 65%        |
|                    | <b>CLAW</b> | <b>ANGLE</b> | <b>PAP</b> | <b>HS</b>   | <b>CW</b>   | <b>MARB</b> | <b>RE</b>  |
|                    | .46         | 35%          | .49        | 55%         | 1.96        | 70%         | .36        |
|                    | 20%         | 28           | 90%        | .53         | 60%         | .50         | 70%        |
|                    |             |              |            |             |             | .050        | 95%        |

**62**

**Barrett 1150A 805A P1**



BD: 08/30/21 ID: 1150 REG #: 20505738

**E&B Plus One**

|                                  |                             |                            |
|----------------------------------|-----------------------------|----------------------------|
| Connealy Confidence Plus         | Connealy Confidence 0100    | <b>\$M</b> <b>72</b> 25%   |
| E&B Lady 1023 Precision 936      | Elbanna of Conanga 1209     | <b>\$W</b> <b>63</b> 35%   |
|                                  | E&B 1680 Precision 1023     | <b>\$F</b> <b>82</b> 55%   |
|                                  | E&B Lady 878 New Design 441 | <b>\$G</b> <b>48</b> 55%   |
| SVR Revolution 3173              | Candolier Forever 376       | <b>\$B</b> <b>130</b> 65%  |
| <b>Barrett Rita 805A 449 REV</b> | S C C Enchantress 3F1 X412  | <b>\$C</b> <b>241</b> 50%  |
| BARRETT Rita 449 1908 0966       | Barretts Iron Mike 0966     | <b>\$EN</b> <b>-10</b> 30% |
|                                  | Barretts Rita 1908 3606 423 |                            |

|                                     |             |              |            |             |             |             |            |
|-------------------------------------|-------------|--------------|------------|-------------|-------------|-------------|------------|
| <b>HEIFER BULL WITH SUPERVISION</b> | <b>CE</b>   | <b>BW</b>    | <b>WW</b>  | <b>YW</b>   | <b>RADG</b> | <b>DMI</b>  | <b>YH</b>  |
|                                     | 5           | 60%          | 2.1        | 70%         | 60          | 55%         | 114        |
|                                     | 40%         | .26          | 45%        | .99         | 45%         | .5          | 55%        |
|                                     | <b>SC</b>   | <b>HP</b>    | <b>CEM</b> | <b>Milk</b> | <b>MW</b>   | <b>MH</b>   | <b>DOC</b> |
|                                     | .4          | 80%          | 12.7       | 40%         | 5           | 80%         | 33         |
|                                     | 15%         | 33           | 15%        | 35          | 85%         | .4          | 50%        |
|                                     | <b>CLAW</b> | <b>ANGLE</b> | <b>PAP</b> | <b>HS</b>   | <b>CW</b>   | <b>MARB</b> | <b>RE</b>  |
|                                     | .50         | 50%          | .52        | 70%         | 1.73        | 65%         | .40        |
|                                     | 25%         | 40           | 70%        | .54         | 60%         | .66         | 45%        |
|                                     |             |              |            |             |             | .014        | 55%        |

**63**

**Barrett 1135 642 P1**



BD: 08/27/21 ID: 1135 REG #: 20505859

**E&B Plus One**

|                                |                             |                           |
|--------------------------------|-----------------------------|---------------------------|
| Connealy Confidence Plus       | Connealy Confidence 0100    | <b>\$M</b> <b>97</b> 1%   |
| E&B Lady 1023 Precision 936    | Elbanna of Conanga 1209     | <b>\$W</b> <b>70</b> 20%  |
|                                | E&B 1680 Precision 1023     | <b>\$F</b> <b>85</b> 50%  |
|                                | E&B Lady 878 New Design 441 | <b>\$G</b> <b>59</b> 30%  |
| Basin Payweight 1682           | Basin Payweight 0065        | <b>\$B</b> <b>144</b> 45% |
| <b>BARRETT Miss 642 349 PW</b> | 21AR O Lass 7017            | <b>\$C</b> <b>284</b> 15% |
| BARRETT Miss 349 920 0966      | Barretts Iron Mike 0966     | <b>\$EN</b> <b>3</b> 10%  |
|                                | Barretts Miss 920 4507 NPV  |                           |

|                    |             |              |            |             |             |             |            |
|--------------------|-------------|--------------|------------|-------------|-------------|-------------|------------|
| <b>HEIFER BULL</b> | <b>CE</b>   | <b>BW</b>    | <b>WW</b>  | <b>YW</b>   | <b>RADG</b> | <b>DMI</b>  | <b>YH</b>  |
|                    | 6           | 55%          | 1.8        | 65%         | 65          | 40%         | 111        |
|                    | 50%         | .25          | 50%        | .50         | 15%         | .2          | 85%        |
|                    | <b>SC</b>   | <b>HP</b>    | <b>CEM</b> | <b>Milk</b> | <b>MW</b>   | <b>MH</b>   | <b>DOC</b> |
|                    | .4          | 80%          | 12.8       | 40%         | 8           | 55%         | 28         |
|                    | 35%         | 12           | 95%        | .0          | 85%         | 20          | 45%        |
|                    | <b>CLAW</b> | <b>ANGLE</b> | <b>PAP</b> | <b>HS</b>   | <b>CW</b>   | <b>MARB</b> | <b>RE</b>  |
|                    | .39         | 15%          | .35        | 4%          | 1.83        | 65%         | .36        |
|                    | 20%         | 41           | 70%        | .69         | 45%         | .87         | 20%        |
|                    |             |              |            |             |             | .001        | 35%        |



Plus One bred heifer

**64**

**Barrett 1112 159 P1**



BD: 08/28/21 ID: 1112 REG #: 20505911

**E&B Plus One**

|                                     |                             |                           |
|-------------------------------------|-----------------------------|---------------------------|
| Connealy Confidence Plus            | Connealy Confidence 0100    | <b>\$M</b> <b>79</b> 15%  |
| E&B Lady 1023 Precision 936         | Elbanna of Conanga 1209     | <b>\$W</b> <b>61</b> 40%  |
|                                     | E&B 1680 Precision 1023     | <b>\$F</b> <b>87</b> 45%  |
|                                     | E&B Lady 878 New Design 441 | <b>\$G</b> <b>37</b> 80%  |
| Garret's Nationwide 8001            | O C C Emblazon 854E         | <b>\$B</b> <b>124</b> 70% |
| <b>Barretts Rita 159 of 1709 GN</b> | Boyd Forever Lady 8003      | <b>\$C</b> <b>240</b> 55% |
| Barretts 1709 of 1204 5522          | Emulation N Bar 5522        | <b>\$EN</b> <b>-4</b> 20% |
|                                     | Barretts 1204 of 0FB1 Bando |                           |

|                    |             |              |            |             |             |             |            |
|--------------------|-------------|--------------|------------|-------------|-------------|-------------|------------|
| <b>HEIFER BULL</b> | <b>CE</b>   | <b>BW</b>    | <b>WW</b>  | <b>YW</b>   | <b>RADG</b> | <b>DMI</b>  | <b>YH</b>  |
|                    | 8           | 35%          | 1.7        | 65%         | 64          | 45%         | 107        |
|                    | 55%         | .22          | 75%        | .90         | 40%         | .3          | 75%        |
|                    | <b>SC</b>   | <b>HP</b>    | <b>CEM</b> | <b>Milk</b> | <b>MW</b>   | <b>MH</b>   | <b>DOC</b> |
|                    | .3          | 90%          | 10.1       | 75%         | 8           | 55%         | 22         |
|                    | 80%         | 34           | 85%        | .3          | 60%         | 5           | 95%        |
|                    | <b>CLAW</b> | <b>ANGLE</b> | <b>PAP</b> | <b>HS</b>   | <b>CW</b>   | <b>MARB</b> | <b>RE</b>  |
|                    | .30         | 2%           | .23        | 1%          | .36         | 30%         | .49        |
|                    | 45%         | 44           | 60%        | .24         | 90%         | .68         | 40%        |
|                    |             |              |            |             |             | -.022       | 15%        |



Bred heifers, mates to the bulls in the sale

Ref Sire **GAR Ashland**

BD: 1/31/15

ID: K25



REG #: +\*18217198

|                               |                      |                          |                 |     |
|-------------------------------|----------------------|--------------------------|-----------------|-----|
| <b>GAR Early Bird</b>         | GAR Daylight         | MCC Daybreak             | <b>\$M</b> 63   | 40% |
|                               | GAR Progress 830     | GAR Objective R227       | <b>\$W</b> 87   | 2%  |
|                               | B/R Ambush 28        | GAR Progress             | <b>\$F</b> 71   | 80% |
|                               | GAR Yield Grade N366 | GAR 111 Rito 3346        | <b>\$G</b> 83   | 4%  |
| <b>Chair Rock Ambush 1018</b> | B/R Ambush 28        | Rockn D Ambush 1531      | <b>\$B</b> 154  | 30% |
|                               | GAR Yield Grade N366 | B/R Ruby of Tiffany 8250 | <b>\$C</b> 263  | 25% |
|                               |                      | GAR Yield Grade          | <b>\$EN</b> -27 | 75% |
|                               |                      | GAR 1407 New Design 1942 |                 |     |



GAR Ashland — Sire of Lots 65-72

|              |             |              |            |             |             |             |            |            |     |     |      |     |     |     |       |     |
|--------------|-------------|--------------|------------|-------------|-------------|-------------|------------|------------|-----|-----|------|-----|-----|-----|-------|-----|
| <b>ANGUS</b> | <b>CED</b>  | <b>BW</b>    | <b>WW</b>  | <b>YW</b>   | <b>RADG</b> | <b>DMI</b>  | <b>YH</b>  |            |     |     |      |     |     |     |       |     |
|              | 13          | 10%          | 0.3        | 30%         | 83          | 10%         | 142        | 10%        | .26 | 40% | 1.93 | 95% | .5  | 50% |       |     |
|              | <b>SC</b>   | <b>HP</b>    | <b>CEM</b> | <b>Milk</b> | <b>MW</b>   | <b>MH</b>   | <b>DOC</b> |            |     |     |      |     |     |     |       |     |
|              | .85         | 50%          | 9.8        | 70%         | 8           | 55%         | 26         | 50%        | 79  | 30% | .5   | 35% | 23  | 25% |       |     |
|              | <b>CLAW</b> | <b>ANGLE</b> | <b>PAP</b> | <b>HS</b>   | <b>CW</b>   | <b>MARB</b> | <b>RE</b>  | <b>FAT</b> |     |     |      |     |     |     |       |     |
|              | .64         | 95%          | .54        | 80%         | -.46        | 15%         | .35        | 15%        | 47  | 45% | 1.14 | 10% | .96 | 10% | -.020 | 15% |

One of the most widely used proven bulls in the Angus breed. They will add pounds, along with quality, when hung on the rail.

**65** **Barrett 1218A 927A ASH**

BD: 08/22/21

ID: 1218



REG #: 20505761

|                               |                           |                           |                 |     |
|-------------------------------|---------------------------|---------------------------|-----------------|-----|
| <b>GAR Ashland</b>            | G A R Early Bird          | G A R Daylight            | <b>\$M</b> 78   | 15% |
|                               | Chair Rock Ambush 1018    | G A R Progress 830        | <b>\$W</b> 79   | 5%  |
|                               |                           | B/R Ambush 28             | <b>\$F</b> 94   | 30% |
|                               |                           | G A R Yield Grade N366    | <b>\$G</b> 62   | 25% |
| <b>RAR Miss 927A 704 C255</b> | S Chisum 255              | S Blossom 0278            | <b>\$B</b> 155  | 30% |
|                               | RAR Fink Miss 704 41 K205 | Nichols Extra K205        | <b>\$C</b> 279  | 20% |
|                               |                           | RAR Fink Miss 41 1323 Res | <b>\$EN</b> -19 | 60% |
|                               |                           |                           |                 |     |



Barrett 1218A 927A ASH — Lot 65

|                    |             |              |            |             |             |             |            |            |     |     |      |     |     |     |       |     |
|--------------------|-------------|--------------|------------|-------------|-------------|-------------|------------|------------|-----|-----|------|-----|-----|-----|-------|-----|
| <b>HEIFER BULL</b> | <b>CED</b>  | <b>BW</b>    | <b>WW</b>  | <b>YW</b>   | <b>RADG</b> | <b>DMI</b>  | <b>YH</b>  |            |     |     |      |     |     |     |       |     |
|                    | 13          | 10%          | .7         | 40%         | 81          | 10%         | 137        | 15%        | .25 | 50% | 1.74 | 90% | .3  | 75% |       |     |
|                    | <b>SC</b>   | <b>HP</b>    | <b>CEM</b> | <b>Milk</b> | <b>MW</b>   | <b>MH</b>   | <b>DOC</b> |            |     |     |      |     |     |     |       |     |
|                    | .6          | 70%          | 11.7       | 55%         | 10          | 30%         | 24         | 70%        | 65  | 50% | .3   | 60% | 25  | 20% |       |     |
|                    | <b>CLAW</b> | <b>ANGLE</b> | <b>PAP</b> | <b>HS</b>   | <b>CW</b>   | <b>MARB</b> | <b>RE</b>  | <b>FAT</b> |     |     |      |     |     |     |       |     |
|                    | .51         | 55%          | .54        | 80%         | -.38        | 15%         | .53        | 50%        | 57  | 30% | .71  | 40% | .94 | 15% | -.010 | 25% |

**66** **Barrett 1212A 930 ASH**

BD: 08/18/21

ID: 1212



REG #: 20505759

|                              |                        |                          |                 |     |
|------------------------------|------------------------|--------------------------|-----------------|-----|
| <b>GAR Ashland</b>           | G A R Early Bird       | G A R Daylight           | <b>\$M</b> 71   | 30% |
|                              | Chair Rock Ambush 1018 | G A R Progress 830       | <b>\$W</b> 80   | 4%  |
|                              |                        | B/R Ambush 28            | <b>\$F</b> 92   | 35% |
|                              |                        | G A R Yield Grade N366   | <b>\$G</b> 54   | 40% |
| <b>RAR Miss 930A 1354 WI</b> | Sitz Wisdom 481T       | Connealy Onward          | <b>\$B</b> 146  | 40% |
|                              | Fink Miss 1354 529 NW  | Sitz Elluna Elite 94P    | <b>\$C</b> 260  | 35% |
|                              |                        | S A V Net Worth 4200     | <b>\$EN</b> -20 | 60% |
|                              |                        | Finks Miss 529 1157 5522 |                 |     |

**67** **Barrett 1215A 936A ASH**

BD: 08/26/21

ID: 1215



REG #: 20505770

|                              |                         |                         |                 |     |
|------------------------------|-------------------------|-------------------------|-----------------|-----|
| <b>GAR Ashland</b>           | G A R Early Bird        | G A R Daylight          | <b>\$M</b> 64   | 50% |
|                              | Chair Rock Ambush 1018  | G A R Progress 830      | <b>\$W</b> 69   | 20% |
|                              |                         | B/R Ambush 28           | <b>\$F</b> 83   | 55% |
|                              |                         | G A R Yield Grade N366  | <b>\$G</b> 80   | 5%  |
| <b>RAR Miss 936A 1361 PW</b> | Basin Payweight 1682    | Basin Payweight 006S    | <b>\$B</b> 163  | 20% |
|                              | Fink Miss 1361 7207 205 | 21AR O Lass 7017        | <b>\$C</b> 275  | 20% |
|                              |                         | Nichols Extra K205      | <b>\$EN</b> -19 | 60% |
|                              |                         | Fink Miss 7207 2111 245 |                 |     |

|             |              |            |             |             |             |            |            |     |     |      |     |     |     |      |     |
|-------------|--------------|------------|-------------|-------------|-------------|------------|------------|-----|-----|------|-----|-----|-----|------|-----|
| <b>CED</b>  | <b>BW</b>    | <b>WW</b>  | <b>YW</b>   | <b>RADG</b> | <b>DMI</b>  | <b>YH</b>  |            |     |     |      |     |     |     |      |     |
| 4           | 70%          | 2.4        | 80%         | 75          | 15%         | 124        | 25%        | .24 | 60% | 1.16 | 60% | .4  | 65% |      |     |
| <b>SC</b>   | <b>HP</b>    | <b>CEM</b> | <b>Milk</b> | <b>MW</b>   | <b>MH</b>   | <b>DOC</b> |            |     |     |      |     |     |     |      |     |
| 1.9         | 5%           | 11.9       | 50%         | 7           | 65%         | 24         | 70%        | 65  | 50% | .4   | 50% | 14  | 70% |      |     |
| <b>CLAW</b> | <b>ANGLE</b> | <b>PAP</b> | <b>HS</b>   | <b>CW</b>   | <b>MARB</b> | <b>RE</b>  | <b>FAT</b> |     |     |      |     |     |     |      |     |
| .63         | 95%          | .48        | 50%         | 1.07        | 45%         | .47        | 40%        | 49  | 50% | 1.23 | 5%  | .69 | 40% | .026 | 70% |

**68** **Barrett 1213A 934A ASH**

BD: 08/18/21

ID: 1213



REG #: 20505774

|                                 |                              |                           |                 |     |
|---------------------------------|------------------------------|---------------------------|-----------------|-----|
| <b>GAR Ashland</b>              | G A R Early Bird             | G A R Daylight            | <b>\$M</b> 59   | 65% |
|                                 | Chair Rock Ambush 1018       | G A R Progress 830        | <b>\$W</b> 80   | 4%  |
|                                 |                              | B/R Ambush 28             | <b>\$F</b> 79   | 65% |
|                                 |                              | G A R Yield Grade N366    | <b>\$G</b> 56   | 35% |
| <b>RAR Formera 934A 6209 PW</b> | Basin Payweight 1682         | Basin Payweight 006S      | <b>\$B</b> 136  | 55% |
|                                 | RAR Fink Formera 6209 2231 D | 21AR O Lass 7017          | <b>\$C</b> 235  | 60% |
|                                 |                              | Sitz Dash 10277           | <b>\$EN</b> -36 | 95% |
|                                 |                              | Fink Formera 2231 5557 FA |                 |     |

**69** **Barrett 1216A 825 ASH**

BD: 08/24/21

ID: 1216



REG #: 20505816

|                                |                             |                             |                 |     |
|--------------------------------|-----------------------------|-----------------------------|-----------------|-----|
| <b>GAR Ashland</b>             | G A R Early Bird            | G A R Daylight              | <b>\$M</b> 66   | 40% |
|                                | Chair Rock Ambush 1018      | G A R Progress 830          | <b>\$W</b> 77   | 10% |
|                                |                             | B/R Ambush 28               | <b>\$F</b> 100  | 20% |
|                                |                             | G A R Yield Grade N366      | <b>\$G</b> 54   | 40% |
| <b>Fink Donna 825 2237 RCE</b> | S A V Resource 1441         | Rito 707 of Ideal 3407 7075 | <b>\$B</b> 154  | 30% |
|                                | Fink Donna 825 2237 8285 FA | S A V Blackcap May 4136     | <b>\$C</b> 266  | 30% |
|                                |                             | S A V Final Answer 0035     | <b>\$EN</b> -46 | 95% |
|                                |                             | Fink Donna 8285 3465 K205   |                 |     |

|             |              |            |             |             |             |            |            |     |     |      |     |     |     |      |     |
|-------------|--------------|------------|-------------|-------------|-------------|------------|------------|-----|-----|------|-----|-----|-----|------|-----|
| <b>CED</b>  | <b>BW</b>    | <b>WW</b>  | <b>YW</b>   | <b>RADG</b> | <b>DMI</b>  | <b>YH</b>  |            |     |     |      |     |     |     |      |     |
| 5           | 60%          | 3.3        | 90%         | 92          | 1%          | 159        | 2%         | .30 | 15% | 1.89 | 95% | .7  | 35% |      |     |
| <b>SC</b>   | <b>HP</b>    | <b>CEM</b> | <b>Milk</b> | <b>MW</b>   | <b>MH</b>   | <b>DOC</b> |            |     |     |      |     |     |     |      |     |
| 1.1         | 35%          | 14.3       | 20%         | 2           | 95%         | 26         | 50%        | 119 | 4%  | .7   | 20% | 34  | 1%  |      |     |
| <b>CLAW</b> | <b>ANGLE</b> | <b>PAP</b> | <b>HS</b>   | <b>CW</b>   | <b>MARB</b> | <b>RE</b>  | <b>FAT</b> |     |     |      |     |     |     |      |     |
| .55         | 75%          | .50        | 60%         | .65         | 35%         | .33        | 15%        | 68  | 10% | .62  | 50% | .76 | 30% | .006 | 45% |

70

**Barrett 1214A 820 ASH** ANGUS6S   
 BD: 08/30/21 ID: 1214 REG #: 20505817

|                                |                          |                             |      |     |     |
|--------------------------------|--------------------------|-----------------------------|------|-----|-----|
| <b>GA R Ashland</b>            | G A R Early Bird         | G A R Daylight              | \$M  | 59  | 65% |
|                                | Chair Rock Ambush 1018   | G A R Progress 830          | \$W  | 66  | 25% |
|                                |                          | B/R Ambush 28               | \$F  | 84  | 50% |
|                                |                          | G A R Yield Grade N366      | \$G  | 59  | 30% |
| <b>Fink Pride 820 2249 RCE</b> | S A V Resource 1441      | Rito 707 of Ideal 3407 7075 | \$B  | 143 | 45% |
|                                | Fink Pride 2249 547 K205 | S A V Blackcap May 4136     | \$C  | 244 | 50% |
|                                |                          | Nichols Extra K205          | \$EN | -27 | 80% |
|                                |                          | Finks PRide 547 1372 5522   |      |     |     |

| CED  | BW    | WW       | YW       | RADG    | DMI     | YH       |         |          |
|------|-------|----------|----------|---------|---------|----------|---------|----------|
| 5    | 60%   | 2.7 85%  | 78 10%   | 131 20% | .23 70% | 1.66 90% | .3 75%  |          |
| SC   | HP    | CEM      | Milk     | MW      | MH      | DOC      |         |          |
| 1.7  | 10%   | 11.3 60% | 3 90%    | 21 85%  | 85 25%  | .3 60%   | 15 65%  |          |
| CLAW | ANGLE | PAP      | HS       | CW      | MARB    | RE       | FAT     |          |
| .46  | 35%   | .46 35%  | -.34 15% | .43 30% | 50 45%  | .77 35%  | .62 50% | .005 40% |

71

**Barrett 1211A 946A ASH** ANGUS6S   
 BD: 08/21/21 ID: 1211 REG #: 20505767

|                             |                           |                        |      |     |     |
|-----------------------------|---------------------------|------------------------|------|-----|-----|
| <b>GA R Ashland</b>         | G A R Early Bird          | G A R Daylight         | \$M  | 69  | 35% |
|                             | Chair Rock Ambush 1018    | G A R Progress 830     | \$W  | 72  | 15% |
|                             |                           | B/R Ambush 28          | \$F  | 76  | 70% |
|                             |                           | G A R Yield Grade N366 | \$G  | 79  | 10% |
| <b>RAR Miss 946A 41 XXP</b> | Sinclair Emulation XXP    | N Bar Emulation EXT    | \$B  | 156 | 30% |
|                             | RAR Fink Miss 41 1323 Res | N Bar Primrose Y3051   | \$C  | 271 | 25% |
|                             |                           | S A V Resource 1441    | \$EN | -19 | 60% |
|                             |                           | Fink Miss 1323 9408 BI |      |     |     |

| HEIFER BULL | CED   | BW       | WW       | YW      | RADG    | DMI      | YH       |          |
|-------------|-------|----------|----------|---------|---------|----------|----------|----------|
|             | 10    | 20%      | .0 25%   | 73 20%  | 123 30% | -.24 60% | 1.30 70% | .3 75%   |
| SC          | HP    | CEM      | Milk     | MW      | MH      | DOC      |          |          |
| .5          | 80%   | 14.6 20% | 0 95%    | 24 70%  | 65 50%  | .2 70%   | 22 35%   |          |
| CLAW        | ANGLE | PAP      | HS       | CW      | MARB    | RE       | FAT      |          |
| .46         | 35%   | .57 90%  | -.27 20% | .28 10% | 43 65%  | 1.28 4%  | .35 90%  | .010 50% |

72

**Barrett 1217A 822 ASH** ANGUS6S   
 BD: 08/27/21 ID: 1217 REG #: 20505818

|                                |                         |                             |      |     |     |
|--------------------------------|-------------------------|-----------------------------|------|-----|-----|
| <b>GA R Ashland</b>            | G A R Early Bird        | G A R Daylight              | \$M  | 61  | 55% |
|                                | Chair Rock Ambush 1018  | G A R Progress 830          | \$W  | 74  | 10% |
|                                |                         | B/R Ambush 28               | \$F  | 96  | 30% |
|                                |                         | G A R Yield Grade N366      | \$G  | 52  | 45% |
| <b>Fink Donna 822 4526 RCE</b> | S A V Resource 1441     | Rito 707 of Ideal 3407 7075 | \$B  | 148 | 35% |
|                                | Fink Donna 4526 0765 FA | S A V Blackcap May 4136     | \$C  | 253 | 40% |
|                                |                         | S A V Final Answer 0035     | \$EN | -39 | 95% |
|                                |                         | Fink Donna 0765 9140 5522   |      |     |     |

| CED  | BW    | WW       | YW      | RADG    | DMI     | YH       |         |           |
|------|-------|----------|---------|---------|---------|----------|---------|-----------|
| 7    | 45%   | 1.6 60%  | 87 3%   | 149 4%  | .27 35% | 2.01 95% | .8 25%  |           |
| SC   | HP    | CEM      | Milk    | MW      | MH      | DOC      |         |           |
| .9   | 45%   | 13.5 30% | 5 80%   | 21 85%  | 111 10% | .6 30%   | 21 40%  |           |
| CLAW | ANGLE | PAP      | HS      | CW      | MARB    | RE       | FAT     |           |
| .47  | 40%   | .51 65%  | .84 40% | .73 85% | 62 20%  | .45 70%  | 1.10 3% | -.009 25% |



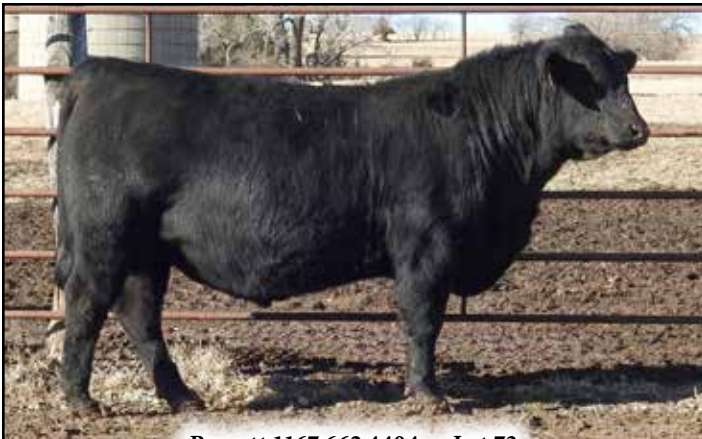
Basin Rainmaker 4404 — Sire of Lots 73-89

*Ref Sire* **Basin Rainmaker 4404** AGI GE EPD   
 BD: 3/19/14 ID: 4404 REG #: \*17913751

|                             |                      |                          |      |     |     |
|-----------------------------|----------------------|--------------------------|------|-----|-----|
| <b>Basin Rainmaker P175</b> | Basin Rainmaker P175 | Basin Rainmaker 747L     | \$M  | 74  | 20% |
| <b>Basin Rainmaker 2704</b> | Basin Erica 7520 BV  | Basin Blackcap Lady 693L | \$W  | 70  | 20% |
|                             |                      | Basin Franchise P142     | \$F  | 109 | 15% |
|                             |                      | Basin Erica 8R02 BV      | \$G  | 43  | 55% |
| <b>Basin Joy 1036</b>       | Basin Payweight 1075 | Vermilion Payweight J847 | \$B  | 152 | 30% |
|                             | Basin Joy 566T       | Basin Lucy 3829          | \$C  | 271 | 20% |
|                             |                      | BPF Special Focus 504    | \$EN | -24 | 70% |
|                             |                      | Basin Joy 204R           |      |     |     |

| ANGUS | CED   | BW       | WW      | YW      | RADG    | DMI     | YH       |          |
|-------|-------|----------|---------|---------|---------|---------|----------|----------|
|       | 6     | 55%      | 1.2 50% | 60 55%  | 109 50% | .22 70% | 1.13 65% | .1 85%   |
| SC    | HP    | CEM      | Milk    | MW      | MH      | DOC     |          |          |
| .69   | 60%   | 12.1 40% | 12 15%  | 37 4%   | 60 50%  | .0 75%  | 25 20%   |          |
| CLAW  | ANGLE | PAP      | HS      | CW      | MARB    | RE      | FAT      |          |
| .34   | 4%    | .34 3%   | .76 40% | .29 10% | 54 30%  | .50 55% | .56 55%  | .032 80% |

Another high accuracy sire. The 4404 sons we've sold in the past have been well-received for their phenotype, as well as having extremely balanced EPDs, great dispositions and sound feet. Our 2- and 3-year-old daughters have turned out to be exactly what we want in our herd... excellent teat and udder quality, fertility, and superb mothering ability.



Barrett 1167 662 4404 — Lot 73

**73 Barrett 1167 662 4404** ANGUS6S   
 BD: 08/30/21 ID: 1167 REG #: 20505576

|                                |                         |                           |      |     |     |
|--------------------------------|-------------------------|---------------------------|------|-----|-----|
| <b>Basin Rainmaker 4404</b>    | Basin Rainmaker 2704    | Basin Rainmaker P175      | \$M  | 77  | 15% |
|                                | Basin Joy 1036          | Basin Erica 7520 BV       | \$W  | 81  | 4%  |
|                                |                         | Basin Payweight 1075      | \$F  | 70  | 85% |
|                                |                         | Basin Joy 566T            | \$G  | 31  | 90% |
| <b>BARRETT Miss 662 415 CH</b> | Coleman Charlo 0256     | O C C Paxton 730P         | \$B  | 101 | 95% |
|                                | BARRETT Miss 415 261 CR | Bohi Abigale 6014         | \$C  | 208 | 85% |
|                                |                         | Cole Creek Cedar Ridge 1V | \$EN | -25 | 75% |
|                                |                         | BARRETT Miss 261 1303 NW  |      |     |     |

| HEIFER BULL | CED   | BW       | WW       | YW      | RADG    | DMI     | YH       |          |
|-------------|-------|----------|----------|---------|---------|---------|----------|----------|
|             | 14    | 4%       | -1.1 10% | 65 40%  | 118 35% | .23 70% | 1.48 80% | .2 85%   |
| SC          | HP    | CEM      | Milk     | MW      | MH      | DOC     |          |          |
| 1.7         | 10%   | 12.7 40% | 11 20%   | 45 1%   | 52 65%  | -.1 90% | 26 15%   |          |
| CLAW        | ANGLE | PAP      | HS       | CW      | MARB    | RE      | FAT      |          |
| .45         | 30%   | .48 50%  | -.06 20% | .45 35% | 38 75%  | .26 90% | .54 65%  | .047 90% |





89

**Barrett 1174 736 4404**

BD: 09/07/21

ID: 1174



REG #: 20505553

|                                 |                             |                             |   |     |    |     |     |    |     |     |    |     |     |    |     |     |     |     |     |     |     |      |    |     |
|---------------------------------|-----------------------------|-----------------------------|---|-----|----|-----|-----|----|-----|-----|----|-----|-----|----|-----|-----|-----|-----|-----|-----|-----|------|----|-----|
| <b>Basin Rainmaker 4404</b>     | Basin Rainmaker 2704        | Basin Rainmaker P175        | <table border="1"> <tr><td>\$M</td><td>83</td><td>10%</td></tr> <tr><td>\$W</td><td>57</td><td>50%</td></tr> <tr><td>\$F</td><td>85</td><td>50%</td></tr> <tr><td>\$G</td><td>46</td><td>60%</td></tr> <tr><td>\$B</td><td>132</td><td>60%</td></tr> <tr><td>\$C</td><td>254</td><td>40%</td></tr> <tr><td>\$EN</td><td>-4</td><td>20%</td></tr> </table> | \$M | 83 | 10% | \$W | 57 | 50% | \$F | 85 | 50% | \$G | 46 | 60% | \$B | 132 | 60% | \$C | 254 | 40% | \$EN | -4 | 20% |
|                                 | \$M                         | 83                          |   | 10% |    |     |     |    |     |     |    |     |     |    |     |     |     |     |     |     |     |      |    |     |
|                                 | \$W                         | 57                          |   | 50% |    |     |     |    |     |     |    |     |     |    |     |     |     |     |     |     |     |      |    |     |
|                                 | \$F                         | 85                          |   | 50% |    |     |     |    |     |     |    |     |     |    |     |     |     |     |     |     |     |      |    |     |
| \$G                             | 46                          | 60%                         |   |     |    |     |     |    |     |     |    |     |     |    |     |     |     |     |     |     |     |      |    |     |
| \$B                             | 132                         | 60%                         |   |     |    |     |     |    |     |     |    |     |     |    |     |     |     |     |     |     |     |      |    |     |
| \$C                             | 254                         | 40%                         |   |     |    |     |     |    |     |     |    |     |     |    |     |     |     |     |     |     |     |      |    |     |
| \$EN                            | -4                          | 20%                         |   |     |    |     |     |    |     |     |    |     |     |    |     |     |     |     |     |     |     |      |    |     |
| Basin Joy 1036                  | Basin Erica 7520 BV         |                             |   |     |    |     |     |    |     |     |    |     |     |    |     |     |     |     |     |     |     |      |    |     |
|                                 | Basin Payweight 1075        |                             |   |     |    |     |     |    |     |     |    |     |     |    |     |     |     |     |     |     |     |      |    |     |
|                                 | Basin Joy 566T              |                             |   |     |    |     |     |    |     |     |    |     |     |    |     |     |     |     |     |     |     |      |    |     |
| <b>Barrett Rita 736 5608 OD</b> | BARRETT Overdrive 4856      | S A V Resource 1441         |   |     |    |     |     |    |     |     |    |     |     |    |     |     |     |     |     |     |     |      |    |     |
|                                 | Barretts Rita 5608 1709 Pre | Barretts Miss 4004 2526 BAR |   |     |    |     |     |    |     |     |    |     |     |    |     |     |     |     |     |     |     |      |    |     |
|                                 |                             | G A R Predestined           |   |     |    |     |     |    |     |     |    |     |     |    |     |     |     |     |     |     |     |      |    |     |
|                                 |                             | Barretts 1709 of 1204 5522  |   |     |    |     |     |    |     |     |    |     |     |    |     |     |     |     |     |     |     |      |    |     |



| CEW  | BW    | WW   | YW   | RADG | DMI  | YH  |     |     |     |     |     |     |     |      |     |
|------|-------|------|------|------|------|-----|-----|-----|-----|-----|-----|-----|-----|------|-----|
| 4    | 70%   | .9   | 45%  | 47   | 90%  | 86  | 85% | .18 | 95% | .77 | 30% | .0  | 95% |      |     |
| SC   | HP    | CEM  | Milk | MW   | MH   | DOC |     |     |     |     |     |     |     |      |     |
| 1.2  | 30%   | 12.8 | 40%  | 8    | 55%  | 35  | 10% | 19  | 95% | -.3 | 95% | 19  | 50% |      |     |
| CLAW | ANGLE | PAP  | HS   | CW   | MARB | RE  | FAT |     |     |     |     |     |     |      |     |
| .25  | 1%    | .31  | 1%   | -.08 | 20%  | .32 | 15% | 40  | 70% | .59 | 55% | .59 | 55% | .052 | 95% |

Ref Sire

**KG Justified 3023**

BD: 1/21/13

ID: 3023



REG #: #\*17707279

|                           |                           |                       |   |     |    |    |     |    |    |     |    |     |     |    |     |     |     |     |     |     |     |      |    |     |
|---------------------------|---------------------------|-----------------------|---|-----|----|----|-----|----|----|-----|----|-----|-----|----|-----|-----|-----|-----|-----|-----|-----|------|----|-----|
| <b>Connealy Judgment</b>  | Connealy Consensus 7229   | Connealy Consensus    | <table border="1"> <tr><td>\$M</td><td>88</td><td>3%</td></tr> <tr><td>\$W</td><td>80</td><td>5%</td></tr> <tr><td>\$F</td><td>71</td><td>80%</td></tr> <tr><td>\$G</td><td>69</td><td>15%</td></tr> <tr><td>\$B</td><td>139</td><td>45%</td></tr> <tr><td>\$C</td><td>268</td><td>25%</td></tr> <tr><td>\$EN</td><td>-7</td><td>30%</td></tr> </table> | \$M | 88 | 3% | \$W | 80 | 5% | \$F | 71 | 80% | \$G | 69 | 15% | \$B | 139 | 45% | \$C | 268 | 25% | \$EN | -7 | 30% |
|                           | \$M                       | 88                    |   | 3%  |    |    |     |    |    |     |    |     |     |    |     |     |     |     |     |     |     |      |    |     |
|                           | \$W                       | 80                    |   | 5%  |    |    |     |    |    |     |    |     |     |    |     |     |     |     |     |     |     |      |    |     |
|                           | \$F                       | 71                    |   | 80% |    |    |     |    |    |     |    |     |     |    |     |     |     |     |     |     |     |      |    |     |
| \$G                       | 69                        | 15%                   |   |     |    |    |     |    |    |     |    |     |     |    |     |     |     |     |     |     |     |      |    |     |
| \$B                       | 139                       | 45%                   |   |     |    |    |     |    |    |     |    |     |     |    |     |     |     |     |     |     |     |      |    |     |
| \$C                       | 268                       | 25%                   |   |     |    |    |     |    |    |     |    |     |     |    |     |     |     |     |     |     |     |      |    |     |
| \$EN                      | -7                        | 30%                   |   |     |    |    |     |    |    |     |    |     |     |    |     |     |     |     |     |     |     |      |    |     |
| Entrine of Conanga 9876   | Blue Lilly of Conanga 16  |                       |   |     |    |    |     |    |    |     |    |     |     |    |     |     |     |     |     |     |     |      |    |     |
|                           | Rito 6EMA of 4L3 Emblazon |                       |   |     |    |    |     |    |    |     |    |     |     |    |     |     |     |     |     |     |     |      |    |     |
|                           | Entrance of Conanga 206   |                       |   |     |    |    |     |    |    |     |    |     |     |    |     |     |     |     |     |     |     |      |    |     |
| <b>KG Miss Magic 1443</b> | Sitz Wisdom 481T          | Connealy Onward       |   |     |    |    |     |    |    |     |    |     |     |    |     |     |     |     |     |     |     |      |    |     |
|                           | KG Miss Magic 3528        | Sitz Elluna Elite 94P |   |     |    |    |     |    |    |     |    |     |     |    |     |     |     |     |     |     |     |      |    |     |
|                           |                           | KG Traveler 8180 8171 |   |     |    |    |     |    |    |     |    |     |     |    |     |     |     |     |     |     |     |      |    |     |
|                           |                           | KG Miss Magic 6560    |   |     |    |    |     |    |    |     |    |     |     |    |     |     |     |     |     |     |     |      |    |     |



KG Justified 3023 — Sire of Lot 90-104



| CEW  | BW    | WW   | YW   | RADG | DMI  | YH  |     |     |     |      |     |     |     |      |     |
|------|-------|------|------|------|------|-----|-----|-----|-----|------|-----|-----|-----|------|-----|
| 12   | 15%   | -2.0 | 4%   | 61   | 50%  | 109 | 50% | .21 | 75% | 1.30 | 75% | -.2 | 95% |      |     |
| SC   | HP    | CEM  | Milk | MW   | MH   | DOC |     |     |     |      |     |     |     |      |     |
| 1.76 | 10%   | 15.2 | 10%  | 7    | 65%  | 30  | 25% | 31  | 80% | -.5  | 95% | 20  | 40% |      |     |
| CLAW | ANGLE | PAP  | HS   | CW   | MARB | RE  | FAT |     |     |      |     |     |     |      |     |
| .35  | 5%    | .45  | 30%  | -.09 | 20%  | .37 | 20% | 33  | 75% | 1.14 | 10% | .31 | 85% | .050 | 95% |

The Justified sons will keep birthweight in check with adequate growth, leaving moderate-framed, easy-fleshing, fertile daughters, while also adding carcass quality. Heifer mates to these bulls are extremely uniform and have bred up exceptionally well.

90

**Barrett 1188 863 JS**

BD: 08/28/21

ID: 1188



REG #: 20505924

|                                 |                            |                             |  |     |    |    |     |    |     |     |    |     |     |    |     |     |     |     |     |     |     |      |    |     |
|---------------------------------|----------------------------|-----------------------------|--|-----|----|----|-----|----|-----|-----|----|-----|-----|----|-----|-----|-----|-----|-----|-----|-----|------|----|-----|
| <b>KG Justified 3023</b>        | Connealy Judgment          | Connealy Consensus 7229     | <table border="1"> <tr><td>\$M</td><td>92</td><td>2%</td></tr> <tr><td>\$W</td><td>72</td><td>15%</td></tr> <tr><td>\$F</td><td>81</td><td>60%</td></tr> <tr><td>\$G</td><td>56</td><td>35%</td></tr> <tr><td>\$B</td><td>137</td><td>55%</td></tr> <tr><td>\$C</td><td>270</td><td>25%</td></tr> <tr><td>\$EN</td><td>-7</td><td>25%</td></tr> </table> | \$M | 92 | 2% | \$W | 72 | 15% | \$F | 81 | 60% | \$G | 56 | 35% | \$B | 137 | 55% | \$C | 270 | 25% | \$EN | -7 | 25% |
|                                 | \$M                        | 92                          |  | 2%  |    |    |     |    |     |     |    |     |     |    |     |     |     |     |     |     |     |      |    |     |
|                                 | \$W                        | 72                          |  | 15% |    |    |     |    |     |     |    |     |     |    |     |     |     |     |     |     |     |      |    |     |
|                                 | \$F                        | 81                          |  | 60% |    |    |     |    |     |     |    |     |     |    |     |     |     |     |     |     |     |      |    |     |
| \$G                             | 56                         | 35%                         |  |     |    |    |     |    |     |     |    |     |     |    |     |     |     |     |     |     |     |      |    |     |
| \$B                             | 137                        | 55%                         |  |     |    |    |     |    |     |     |    |     |     |    |     |     |     |     |     |     |     |      |    |     |
| \$C                             | 270                        | 25%                         |  |     |    |    |     |    |     |     |    |     |     |    |     |     |     |     |     |     |     |      |    |     |
| \$EN                            | -7                         | 25%                         |  |     |    |    |     |    |     |     |    |     |     |    |     |     |     |     |     |     |     |      |    |     |
| KG Miss Magic 1443              | Entrine of Conanga 9876    |                             |  |     |    |    |     |    |     |     |    |     |     |    |     |     |     |     |     |     |     |      |    |     |
|                                 | Sitz Wisdom 481T           |                             |  |     |    |    |     |    |     |     |    |     |     |    |     |     |     |     |     |     |     |      |    |     |
|                                 | KG Miss Magic 3528         |                             |  |     |    |    |     |    |     |     |    |     |     |    |     |     |     |     |     |     |     |      |    |     |
| <b>BARRETT Miss 863 360 XXP</b> | Sinclair Emulation XXP     | N Bar Emulation EXT         |  |     |    |    |     |    |     |     |    |     |     |    |     |     |     |     |     |     |     |      |    |     |
|                                 | BARRETT Miss 360 1606 0966 | N Bar Primrose Y3051        |  |     |    |    |     |    |     |     |    |     |     |    |     |     |     |     |     |     |     |      |    |     |
|                                 |                            | Barretts Iron Mike 0966     |  |     |    |    |     |    |     |     |    |     |     |    |     |     |     |     |     |     |     |      |    |     |
|                                 |                            | Barretts Miss 1606 1203 423 |  |     |    |    |     |    |     |     |    |     |     |    |     |     |     |     |     |     |     |      |    |     |



Barrett 1188 863 JS — Lot 90



| CEW  | BW    | WW   | YW   | RADG | DMI  | YH  |     |     |     |      |     |     |     |      |     |
|------|-------|------|------|------|------|-----|-----|-----|-----|------|-----|-----|-----|------|-----|
| 11   | 15%   | -1.7 | 5%   | 58   | 60%  | 103 | 60% | .21 | 80% | 1.05 | 50% | -.1 | 95% |      |     |
| SC   | HP    | CEM  | Milk | MW   | MH   | DOC |     |     |     |      |     |     |     |      |     |
| .6   | 70%   | 18   | 2%   | 9    | 40%  | 35  | 10% | 26  | 90% | -.3  | 95% | 17  | 60% |      |     |
| CLAW | ANGLE | PAP  | HS   | CW   | MARB | RE  | FAT |     |     |      |     |     |     |      |     |
| .41  | 20%   | .43  | 25%  | -.41 | 15%  | .44 | 35% | 42  | 65% | .82  | 30% | .51 | 70% | .050 | 95% |

91

**Barrett 1189 864 JS**

BD: 08/22/21

ID: 1189



REG #: 20505923

|                                 |                         |                           |  |     |    |     |     |    |     |     |    |     |     |    |     |     |     |     |     |     |     |      |     |     |
|---------------------------------|-------------------------|---------------------------|--|-----|----|-----|-----|----|-----|-----|----|-----|-----|----|-----|-----|-----|-----|-----|-----|-----|------|-----|-----|
| <b>KG Justified 3023</b>        | Connealy Judgment       | Connealy Consensus 7229   | <table border="1"> <tr><td>\$M</td><td>59</td><td>65%</td></tr> <tr><td>\$W</td><td>70</td><td>20%</td></tr> <tr><td>\$F</td><td>73</td><td>75%</td></tr> <tr><td>\$G</td><td>56</td><td>35%</td></tr> <tr><td>\$B</td><td>129</td><td>65%</td></tr> <tr><td>\$C</td><td>226</td><td>70%</td></tr> <tr><td>\$EN</td><td>-17</td><td>50%</td></tr> </table> | \$M | 59 | 65% | \$W | 70 | 20% | \$F | 73 | 75% | \$G | 56 | 35% | \$B | 129 | 65% | \$C | 226 | 70% | \$EN | -17 | 50% |
|                                 | \$M                     | 59                        |  | 65% |    |     |     |    |     |     |    |     |     |    |     |     |     |     |     |     |     |      |     |     |
|                                 | \$W                     | 70                        |  | 20% |    |     |     |    |     |     |    |     |     |    |     |     |     |     |     |     |     |      |     |     |
|                                 | \$F                     | 73                        |  | 75% |    |     |     |    |     |     |    |     |     |    |     |     |     |     |     |     |     |      |     |     |
| \$G                             | 56                      | 35%                       |  |     |    |     |     |    |     |     |    |     |     |    |     |     |     |     |     |     |     |      |     |     |
| \$B                             | 129                     | 65%                       |  |     |    |     |     |    |     |     |    |     |     |    |     |     |     |     |     |     |     |      |     |     |
| \$C                             | 226                     | 70%                       |  |     |    |     |     |    |     |     |    |     |     |    |     |     |     |     |     |     |     |      |     |     |
| \$EN                            | -17                     | 50%                       |  |     |    |     |     |    |     |     |    |     |     |    |     |     |     |     |     |     |     |      |     |     |
| KG Miss Magic 1443              | Entrine of Conanga 9876 |                           |  |     |    |     |     |    |     |     |    |     |     |    |     |     |     |     |     |     |     |      |     |     |
|                                 | Sitz Wisdom 481T        |                           |  |     |    |     |     |    |     |     |    |     |     |    |     |     |     |     |     |     |     |      |     |     |
|                                 | KG Miss Magic 3528      |                           |  |     |    |     |     |    |     |     |    |     |     |    |     |     |     |     |     |     |     |      |     |     |
| <b>BARRETT Miss 864 410 XXP</b> | Sinclair Emulation XXP  | N Bar Emulation EXT       |  |     |    |     |     |    |     |     |    |     |     |    |     |     |     |     |     |     |     |      |     |     |
|                                 | BARRETT Miss 410 243 CR | N Bar Primrose Y3051      |  |     |    |     |     |    |     |     |    |     |     |    |     |     |     |     |     |     |     |      |     |     |
|                                 |                         | Cole Creek Cedar Ridge 1V |  |     |    |     |     |    |     |     |    |     |     |    |     |     |     |     |     |     |     |      |     |     |
|                                 |                         | BARRETT Miss 243 2408 NW  |  |     |    |     |     |    |     |     |    |     |     |    |     |     |     |     |     |     |     |      |     |     |



Barrett 1189 864 JS — Lot 91



| CEW  | BW    | WW   | YW   | RADG | DMI  | YH  |     |     |     |     |     |     |     |      |     |
|------|-------|------|------|------|------|-----|-----|-----|-----|-----|-----|-----|-----|------|-----|
| 12   | 10%   | -2.1 | 3%   | 60   | 55%  | 100 | 65% | .20 | 90% | .90 | 40% | .0  | 95% |      |     |
| SC   | HP    | CEM  | Milk | MW   | MH   | DOC |     |     |     |     |     |     |     |      |     |
| 1.5  | 15%   | 9.4  | 80%  | 12   | 15%  | 32  | 15% | 50  | 70% | .0  | 85% | 22  | 35% |      |     |
| CLAW | ANGLE | PAP  | HS   | CW   | MARB | RE  | FAT |     |     |     |     |     |     |      |     |
| .53  | 65%   | .57  | 90%  | .19  | 25%  | .75 | 90% | 35  | 80% | .97 | 20% | .14 | 95% | .079 | 95% |





100

**Barrett 1202A 911 JS**

BD: 09/09/21

ID: 1202



REG #: 20505910

**KG Justified 3023**  
 Connealy Judgment  
 KG Miss Magic 1443  
 N Bar Emulation Ext A1747  
**Barrett 911 625 A1747**  
 BARRETT Rita 625 310 OD

Connealy Consensus 7229  
 Entrine of Conanga 9876  
 Sitz Wisdom 481T  
 KG Miss Magic 3528  
 N Bar Emulation EXT  
 N Bar Clova Pride U3031  
 BARRETT Overdrive 4856  
 BARRETT Rita 310 121 9074

|      |     |     |
|------|-----|-----|
| \$M  | 79  | 15% |
| \$W  | 75  | 10% |
| \$F  | 71  | 80% |
| \$G  | 43  | 65% |
| \$B  | 114 | 85% |
| \$C  | 227 | 65% |
| \$EN | -14 | 45% |

|                                     |  |              |            |           |           |             |           |            |     |     |     |      |     |     |     |      |     |
|-------------------------------------|--|--------------|------------|-----------|-----------|-------------|-----------|------------|-----|-----|-----|------|-----|-----|-----|------|-----|
| <b>HEIFER BULL WITH SUPERVISION</b> |  | CED          | BW         | WW        | YW        | RADG        | DMI       | YH         |     |     |     |      |     |     |     |      |     |
|                                     |  | 6            | 55%        | .3        | 30%       | 74          | 20%       | 118        | 35% | .20 | 90% | 1.25 | 65% | .2  | 85% |      |     |
|                                     |  | SC           | HP         | CEM       | Milk      | MW          | MH        | DOC        |     |     |     |      |     |     |     |      |     |
|                                     |  | .7           | 60%        | 11.4      | 55%       | 8           | 55%       | 24         | 70% | 54  | 65% | -.1  | 90% | 20  | 45% |      |     |
| <b>CLAW</b>                         |  | <b>ANGLE</b> | <b>PAP</b> | <b>HS</b> | <b>CW</b> | <b>MARB</b> | <b>RE</b> | <b>FAT</b> |     |     |     |      |     |     |     |      |     |
|                                     |  | .37          | 10%        | .47       | 45%       | -.44        | 15%       | .21        | 5%  | 43  | 65% | .55  | 60% | .48 | 75% | .052 | 95% |

101

**Barrett 1191 868 JS**

BD: 08/28/21

ID: 1191



REG #: 20505920

**KG Justified 3023**  
 Connealy Judgment  
 KG Miss Magic 1443  
 Sinclair Emulation XXP  
**BARRETT Pride 868 463 XXP**  
 BARRETT Pride 463 4106 RE

Connealy Consensus 7229  
 Entrine of Conanga 9876  
 Sitz Wisdom 481T  
 KG Miss Magic 3528  
 N Bar Emulation EXT  
 N Bar Primrose Y3051  
 S A V Resource 1441  
 Barretts Pride 4106 4104 PT

|      |     |     |
|------|-----|-----|
| \$M  | 78  | 15% |
| \$W  | 76  | 10% |
| \$F  | 67  | 90% |
| \$G  | 51  | 45% |
| \$B  | 118 | 80% |
| \$C  | 231 | 65% |
| \$EN | -13 | 40% |

|             |              |            |           |           |             |           |            |     |     |      |     |     |     |     |      |     |
|-------------|--------------|------------|-----------|-----------|-------------|-----------|------------|-----|-----|------|-----|-----|-----|-----|------|-----|
| CED         | BW           | WW         | YW        | RADG      | DMI         | YH        |            |     |     |      |     |     |     |     |      |     |
| 3           | 75%          | 1.4        | 55%       | 64        | 45%         | 109       | 50%        | .21 | 80% | 1.07 | 50% | -.1 | 95% |     |      |     |
| SC          | HP           | CEM        | Milk      | MW        | MH          | DOC       |            |     |     |      |     |     |     |     |      |     |
| .5          | 75%          | 15         | 15%       | 5         | 80%         | 38        | 2%         | 34  | 85% | -.2  | 95% | 12  | 80% |     |      |     |
| <b>CLAW</b> | <b>ANGLE</b> | <b>PAP</b> | <b>HS</b> | <b>CW</b> | <b>MARB</b> | <b>RE</b> | <b>FAT</b> |     |     |      |     |     |     |     |      |     |
|             | .55          | 75%        | .44       | 30%       | 3.98        | 95%       | .52        | 50% | 35  | 80%  | .80 | 30% | .11 | 95% | .037 | 85% |

102

**Barrett 1201A 920 JS**

BD: 09/19/21

ID: 1201



REG #: 20505907

**KG Justified 3023**  
 Connealy Judgment  
 KG Miss Magic 1443  
 N Bar Emulation Ext A1747  
**Barrett 920 372 A1747**  
 BARRETT Miss 372 4004 NW

Connealy Consensus 7229  
 Entrine of Conanga 9876  
 Sitz Wisdom 481T  
 KG Miss Magic 3528  
 N Bar Emulation EXT  
 N Bar Clova Pride U3031  
 S A V Net Worth 4200  
 Barretts Miss 4004 2526 BAR

|      |     |     |
|------|-----|-----|
| \$M  | 74  | 20% |
| \$W  | 70  | 20% |
| \$F  | 75  | 75% |
| \$G  | 58  | 30% |
| \$B  | 134 | 55% |
| \$C  | 248 | 45% |
| \$EN | -1  | 15% |

|             |              |            |           |           |             |           |            |     |     |     |     |     |     |     |      |     |
|-------------|--------------|------------|-----------|-----------|-------------|-----------|------------|-----|-----|-----|-----|-----|-----|-----|------|-----|
| CED         | BW           | WW         | YW        | RADG      | DMI         | YH        |            |     |     |     |     |     |     |     |      |     |
| 5           | 60%          | .8         | 40%       | 61        | 50%         | 109       | 50%        | .23 | 70% | .83 | 35% | .1  | 90% |     |      |     |
| SC          | HP           | CEM        | Milk      | MW        | MH          | DOC       |            |     |     |     |     |     |     |     |      |     |
| .3          | 85%          | 10.2       | 70%       | 5         | 80%         | 32        | 15%        | 17  | 95% | -.4 | 95% | 16  | 65% |     |      |     |
| <b>CLAW</b> | <b>ANGLE</b> | <b>PAP</b> | <b>HS</b> | <b>CW</b> | <b>MARB</b> | <b>RE</b> | <b>FAT</b> |     |     |     |     |     |     |     |      |     |
|             | .48          | 45%        | .54       | 80%       | 1.03        | 45%       | .60        | 65% | 39  | 75% | .97 | 20% | .27 | 95% | .071 | 95% |

103

**Barrett 1198 976 JS**

BD: 08/23/21

ID: 1198



REG #: 20505590

**KG Justified 3023**  
 Connealy Judgment  
 KG Miss Magic 1443  
 S A V Resource 1441  
**Barrett Miss 976 5108 RE**  
 Barretts Miss 5108 3305 Pre

Connealy Consensus 7229  
 Entrine of Conanga 9876  
 Sitz Wisdom 481T  
 KG Miss Magic 3528  
 Rito 707 of Ideal 3407 7075  
 S A V Blackcap May 4136  
 G A R Predestined  
 Barretts Miss 3305 2238 616

|      |     |     |
|------|-----|-----|
| \$M  | 76  | 20% |
| \$W  | 71  | 15% |
| \$F  | 64  | 90% |
| \$G  | 52  | 45% |
| \$B  | 116 | 80% |
| \$C  | 226 | 70% |
| \$EN | -18 | 55% |

|             |              |            |           |           |             |           |            |     |     |      |     |     |     |     |      |     |
|-------------|--------------|------------|-----------|-----------|-------------|-----------|------------|-----|-----|------|-----|-----|-----|-----|------|-----|
| CED         | BW           | WW         | YW        | RADG      | DMI         | YH        |            |     |     |      |     |     |     |     |      |     |
| -1          | 95%          | 2.0        | 70%       | 69        | 30%         | 113       | 45%        | .18 | 95% | 1.59 | 85% | .0  | 95% |     |      |     |
| SC          | HP           | CEM        | Milk      | MW        | MH          | DOC       |            |     |     |      |     |     |     |     |      |     |
| 1.6         | 15%          | 14.4       | 20%       | 3         | 90%         | 29        | 30%        | 57  | 60% | -.2  | 95% | 15  | 65% |     |      |     |
| <b>CLAW</b> | <b>ANGLE</b> | <b>PAP</b> | <b>HS</b> | <b>CW</b> | <b>MARB</b> | <b>RE</b> | <b>FAT</b> |     |     |      |     |     |     |     |      |     |
|             | .31          | 2%         | .43       | 25%       | .64         | 35%       | .35        | 20% | 39  | 75%  | .59 | 55% | .78 | 30% | .019 | 60% |

104

**Barrett 1197 975 JS**

BD: 08/23/21

ID: 1197



REG #: 20505591

**KG Justified 3023**  
 Connealy Judgment  
 KG Miss Magic 1443  
 BARRETT Overdrive 4856  
**Barrett Rita 975 162 OD**  
 BARRETT Rita 162 of 1709 GN

Connealy Consensus 7229  
 Entrine of Conanga 9876  
 Sitz Wisdom 481T  
 KG Miss Magic 3528  
 S A V Resource 1441  
 Barretts Miss 4004 2526 BAR  
 Garret's Nationwide 8001  
 Barretts 1709 of 1204 5522

|      |     |     |
|------|-----|-----|
| \$M  | 77  | 15% |
| \$W  | 64  | 30% |
| \$F  | 77  | 70% |
| \$G  | 48  | 55% |
| \$B  | 125 | 70% |
| \$C  | 239 | 55% |
| \$EN | -16 | 50% |

|             |              |            |           |           |             |           |            |     |     |     |     |     |     |     |      |     |
|-------------|--------------|------------|-----------|-----------|-------------|-----------|------------|-----|-----|-----|-----|-----|-----|-----|------|-----|
| CED         | BW           | WW         | YW        | RADG      | DMI         | YH        |            |     |     |     |     |     |     |     |      |     |
| 3           | 75%          | 2.0        | 70%       | 67        | 35%         | 111       | 50%        | .21 | 80% | .97 | 45% | .4  | 65% |     |      |     |
| SC          | HP           | CEM        | Milk      | MW        | MH          | DOC       |            |     |     |     |     |     |     |     |      |     |
| 2.1         | 3%           | 11.8       | 50%       | 8         | 55%         | 25        | 60%        | 57  | 60% | .2  | 70% | 29  | 10% |     |      |     |
| <b>CLAW</b> | <b>ANGLE</b> | <b>PAP</b> | <b>HS</b> | <b>CW</b> | <b>MARB</b> | <b>RE</b> | <b>FAT</b> |     |     |     |     |     |     |     |      |     |
|             | .35          | 5%         | .42       | 20%       | -.92        | 10%       | .65        | 75% | 40  | 70% | .57 | 55% | .53 | 65% | .013 | 55% |



Ref Sire

## BARRETT Overdrive 4856



BD: 8/27/14 ID: 4856 REG #: +\*18175358

|   |             |   |            |  |             |             |            |            |     |     |      |     |     |     |       |     |     |     |     |     |     |     |      |     |     |
|---|-------------|---|------------|--|-------------|-------------|------------|------------|-----|-----|------|-----|-----|-----|-------|-----|-----|-----|-----|-----|-----|-----|------|-----|-----|
| <b>SAV Resource 1441</b><br>Rito 707 of Ideal 3407 7075<br>SAV Blackcap May 4136        |             | RR Rito 707<br>Ideal 3407 of 1418 076<br>SAV 8180 Traveler 004<br>SAV May 2397            |            | <table border="1"> <tr><td>\$M</td><td>50</td><td>75%</td></tr> <tr><td>\$W</td><td>53</td><td>60%</td></tr> <tr><td>\$F</td><td>74</td><td>75%</td></tr> <tr><td>\$G</td><td>34</td><td>75%</td></tr> <tr><td>\$B</td><td>108</td><td>80%</td></tr> <tr><td>\$C</td><td>190</td><td>85%</td></tr> <tr><td>\$EN</td><td>-31</td><td>85%</td></tr> </table> | \$M         | 50          | 75%        | \$W        | 53  | 60% | \$F  | 74  | 75% | \$G | 34    | 75% | \$B | 108 | 80% | \$C | 190 | 85% | \$EN | -31 | 85% |
| \$M   | 50          | 75%   |            |  |             |             |            |            |     |     |      |     |     |     |       |     |     |     |     |     |     |     |      |     |     |
| \$W   | 53          | 60%   |            |  |             |             |            |            |     |     |      |     |     |     |       |     |     |     |     |     |     |     |      |     |     |
| \$F   | 74          | 75%   |            |  |             |             |            |            |     |     |      |     |     |     |       |     |     |     |     |     |     |     |      |     |     |
| \$G   | 34          | 75%   |            |  |             |             |            |            |     |     |      |     |     |     |       |     |     |     |     |     |     |     |      |     |     |
| \$B   | 108         | 80%   |            |  |             |             |            |            |     |     |      |     |     |     |       |     |     |     |     |     |     |     |      |     |     |
| \$C   | 190         | 85%   |            |  |             |             |            |            |     |     |      |     |     |     |       |     |     |     |     |     |     |     |      |     |     |
| \$EN  | -31         | 85%   |            |  |             |             |            |            |     |     |      |     |     |     |       |     |     |     |     |     |     |     |      |     |     |
| <b>Barretts Miss 4004 2526 BAR</b><br>BAR Ext Traveler 205<br>Finks Miss 2526 9078 5175 |             | N Bar Emulation EXT<br>BAR Queen Traveler 3015<br>SAF 598 Bando 5175<br>DCF 9078 036 4193 |            |  |             |             |            |            |     |     |      |     |     |     |       |     |     |     |     |     |     |     |      |     |     |
| <b>ANGUS</b>  | <b>CED</b>  | <b>BW</b>   | <b>WW</b>  | <b>YW</b>  | <b>RADG</b> | <b>DMI</b>  | <b>YH</b>  |            |     |     |      |     |     |     |       |     |     |     |     |     |     |     |      |     |     |
|   | 4           | 70%   | 2.7        | 85%  | 60          | 55%         | 109        | 50%        | .24 | 55% | 1.04 | 55% | .2  | 80% |       |     |     |     |     |     |     |     |      |     |     |
|   | <b>SC</b>   | <b>HP</b>   | <b>CEM</b> | <b>Milk</b>  | <b>MW</b>   | <b>MH</b>   | <b>DOC</b> |            |     |     |      |     |     |     |       |     |     |     |     |     |     |     |      |     |     |
|   | 1.21        | 25%   | 9.1        | 80%  | 3           | 90%         | 29         | 30%        | 83  | 25% | .1   | 70% | 28  | 10% |       |     |     |     |     |     |     |     |      |     |     |
|   | <b>CLAW</b> | <b>ANGLE</b>  | <b>PAP</b> | <b>HS</b>  | <b>CW</b>   | <b>MARB</b> | <b>RE</b>  | <b>FAT</b> |     |     |      |     |     |     |       |     |     |     |     |     |     |     |      |     |     |
|   | .35         | 5%  | .41        | 15%  | .94         | 45%         | .38        | 20%        | 39  | 65% | .13  | 90% | .84 | 20% | -.016 | 20% |     |     |     |     |     |     |      |     |     |

Overdrive has been used extremely heavily in our herd. He will leave beautiful females with great udders and fertility in a moderate package. These will be the last Overdrives we have.

## 105

## Barrett 1207A 828 OD



BD: 08/28/21 ID: 1207 REG #: 20502317

|  |             |  |            |  |             |             |            |            |     |     |      |     |     |     |       |     |     |     |     |     |     |     |      |     |     |
|--|-------------|--|------------|--|-------------|-------------|------------|------------|-----|-----|------|-----|-----|-----|-------|-----|-----|-----|-----|-----|-----|-----|------|-----|-----|
| <b>BARRETT Overdrive 4856</b><br>SA V Resource 1441<br>Barretts Miss 4004 2526 BAR |             | Rito 707 of Ideal 3407 7075<br>SA V Blackcap May 4136<br>B A R Ext Traveler 205<br>Finks Miss 2526 9078 5175<br>Connealy Onward<br>Sitz Elluna Elite 94P<br>SA V Final Answer 0035<br>Fink Formera 9374 7223 NPV |            | <table border="1"> <tr><td>\$M</td><td>59</td><td>65%</td></tr> <tr><td>\$W</td><td>63</td><td>35%</td></tr> <tr><td>\$F</td><td>77</td><td>70%</td></tr> <tr><td>\$G</td><td>49</td><td>50%</td></tr> <tr><td>\$B</td><td>126</td><td>70%</td></tr> <tr><td>\$C</td><td>222</td><td>70%</td></tr> <tr><td>\$EN</td><td>-35</td><td>90%</td></tr> </table> | \$M         | 59          | 65%        | \$W        | 63  | 35% | \$F  | 77  | 70% | \$G | 49    | 50% | \$B | 126 | 70% | \$C | 222 | 70% | \$EN | -35 | 90% |
| \$M  | 59          | 65%  |            |  |             |             |            |            |     |     |      |     |     |     |       |     |     |     |     |     |     |     |      |     |     |
| \$W  | 63          | 35%  |            |  |             |             |            |            |     |     |      |     |     |     |       |     |     |     |     |     |     |     |      |     |     |
| \$F  | 77          | 70%  |            |  |             |             |            |            |     |     |      |     |     |     |       |     |     |     |     |     |     |     |      |     |     |
| \$G  | 49          | 50%  |            |  |             |             |            |            |     |     |      |     |     |     |       |     |     |     |     |     |     |     |      |     |     |
| \$B  | 126         | 70%  |            |  |             |             |            |            |     |     |      |     |     |     |       |     |     |     |     |     |     |     |      |     |     |
| \$C  | 222         | 70%  |            |  |             |             |            |            |     |     |      |     |     |     |       |     |     |     |     |     |     |     |      |     |     |
| \$EN   | -35         | 90%  |            |  |             |             |            |            |     |     |      |     |     |     |       |     |     |     |     |     |     |     |      |     |     |
| <b>Fink Formera 828 4576 WI</b><br>Sitz Wisdom 481T<br>Fink Formera 4576 9374 FA   |             |  |            |  |             |             |            |            |     |     |      |     |     |     |       |     |     |     |     |     |     |     |      |     |     |
| <b>ANGUS</b>   | <b>CED</b>  | <b>BW</b>  | <b>WW</b>  | <b>YW</b>  | <b>RADG</b> | <b>DMI</b>  | <b>YH</b>  |            |     |     |      |     |     |     |       |     |     |     |     |     |     |     |      |     |     |
|  | 7           | 45%  | 1.4        | 55%  | 69          | 30%         | 131        | 20%        | .28 | 25% | 1.71 | 90% | .5  | 55% |       |     |     |     |     |     |     |     |      |     |     |
|  | <b>SC</b>   | <b>HP</b>  | <b>CEM</b> | <b>Milk</b>  | <b>MW</b>   | <b>MH</b>   | <b>DOC</b> |            |     |     |      |     |     |     |       |     |     |     |     |     |     |     |      |     |     |
|  | 1.5         | 15%  | 13.1       | 35%  | 6           | 75%         | 28         | 35%        | 94  | 20% | .5   | 40% | 23  | 30% |       |     |     |     |     |     |     |     |      |     |     |
|  | <b>CLAW</b> | <b>ANGLE</b>   | <b>PAP</b> | <b>HS</b>  | <b>CW</b>   | <b>MARB</b> | <b>RE</b>  | <b>FAT</b> |     |     |      |     |     |     |       |     |     |     |     |     |     |     |      |     |     |
|  | .40         | 15%  | .44        | 30%  | 2.17        | 75%         | .38        | 25%        | 42  | 65% | .47  | 70% | .81 | 25% | -.016 | 15% |     |     |     |     |     |     |      |     |     |

## 107

## Barrett 1206A 827 OD



BD: 08/16/21 ID: 1206 REG #: 20502316

|  |             |  |            |  |             |             |            |            |     |     |     |     |     |     |       |     |     |     |     |     |     |     |      |     |     |
|--|-------------|--|------------|--|-------------|-------------|------------|------------|-----|-----|-----|-----|-----|-----|-------|-----|-----|-----|-----|-----|-----|-----|------|-----|-----|
| <b>BARRETT Overdrive 4856</b><br>SA V Resource 1441<br>Barretts Miss 4004 2526 BAR |             | Rito 707 of Ideal 3407 7075<br>SA V Blackcap May 4136<br>B A R Ext Traveler 205<br>Finks Miss 2526 9078 5175<br>Connealy Onward<br>Sitz Elluna Elite 94P<br>SA V Final Answer 0035<br>Fink Formera 9374 7223 NPV |            | <table border="1"> <tr><td>\$M</td><td>60</td><td>60%</td></tr> <tr><td>\$W</td><td>55</td><td>55%</td></tr> <tr><td>\$F</td><td>72</td><td>80%</td></tr> <tr><td>\$G</td><td>48</td><td>55%</td></tr> <tr><td>\$B</td><td>120</td><td>75%</td></tr> <tr><td>\$C</td><td>216</td><td>75%</td></tr> <tr><td>\$EN</td><td>-19</td><td>60%</td></tr> </table> | \$M         | 60          | 60%        | \$W        | 55  | 55% | \$F | 72  | 80% | \$G | 48    | 55% | \$B | 120 | 75% | \$C | 216 | 75% | \$EN | -19 | 60% |
| \$M  | 60          | 60%  |            |  |             |             |            |            |     |     |     |     |     |     |       |     |     |     |     |     |     |     |      |     |     |
| \$W  | 55          | 55%  |            |  |             |             |            |            |     |     |     |     |     |     |       |     |     |     |     |     |     |     |      |     |     |
| \$F  | 72          | 80%  |            |  |             |             |            |            |     |     |     |     |     |     |       |     |     |     |     |     |     |     |      |     |     |
| \$G  | 48          | 55%  |            |  |             |             |            |            |     |     |     |     |     |     |       |     |     |     |     |     |     |     |      |     |     |
| \$B  | 120         | 75%  |            |  |             |             |            |            |     |     |     |     |     |     |       |     |     |     |     |     |     |     |      |     |     |
| \$C  | 216         | 75%  |            |  |             |             |            |            |     |     |     |     |     |     |       |     |     |     |     |     |     |     |      |     |     |
| \$EN   | -19         | 60%  |            |  |             |             |            |            |     |     |     |     |     |     |       |     |     |     |     |     |     |     |      |     |     |
| <b>Fink Formera 827 4576 WI</b><br>Sitz Wisdom 481T<br>Fink Formera 4576 9374 FA   |             |  |            |  |             |             |            |            |     |     |     |     |     |     |       |     |     |     |     |     |     |     |      |     |     |
| <b>ANGUS</b>   | <b>CED</b>  | <b>BW</b>  | <b>WW</b>  | <b>YW</b>  | <b>RADG</b> | <b>DMI</b>  | <b>YH</b>  |            |     |     |     |     |     |     |       |     |     |     |     |     |     |     |      |     |     |
|  | 7           | 45%  | .3         | 30%  | 56          | 65%         | 103        | 60%        | .27 | 35% | .73 | 30% | .5  | 55% |       |     |     |     |     |     |     |     |      |     |     |
|  | <b>SC</b>   | <b>HP</b>  | <b>CEM</b> | <b>Milk</b>  | <b>MW</b>   | <b>MH</b>   | <b>DOC</b> |            |     |     |     |     |     |     |       |     |     |     |     |     |     |     |      |     |     |
|  | 1.6         | 10%  | 12         | 50%  | 8           | 55%         | 27         | 45%        | 61  | 55% | .2  | 70% | 31  | 4%  |       |     |     |     |     |     |     |     |      |     |     |
|  | <b>CLAW</b> | <b>ANGLE</b>   | <b>PAP</b> | <b>HS</b>  | <b>CW</b>   | <b>MARB</b> | <b>RE</b>  | <b>FAT</b> |     |     |     |     |     |     |       |     |     |     |     |     |     |     |      |     |     |
|  | .50         | 50%  | .53        | 75%  | 1.13        | 50%         | .53        | 50%        | 31  | 90% | .42 | 75% | .76 | 30% | -.033 | 5%  |     |     |     |     |     |     |      |     |     |

Ref Sire

## BARRETT 6642 357 PW



BD: 08/28/16 ID: 6642 REG #: 18806577

|  |             |   |            |  |             |             |            |            |      |     |      |     |     |     |       |     |     |     |     |     |     |     |      |     |     |
|--|-------------|---|------------|--|-------------|-------------|------------|------------|------|-----|------|-----|-----|-----|-------|-----|-----|-----|-----|-----|-----|-----|------|-----|-----|
| <b>Basin Payweight 1682</b><br>Basin Payweight 0065<br>21AR O Lass 7017                      |             | Vermilion Payweight J847<br>Basin Lucy 3829<br>HARB Pendleton 765 J H<br>21AR O Lass F24A<br>Garret's Nationwide 8001<br>Barretts Miss 4004 2526 BAR<br>Finks 423 of 2325 RT<br>Finks Pride 210 0410 Dist |            | <table border="1"> <tr><td>\$M</td><td>46</td><td>85%</td></tr> <tr><td>\$W</td><td>63</td><td>35%</td></tr> <tr><td>\$F</td><td>98</td><td>30%</td></tr> <tr><td>\$G</td><td>56</td><td>30%</td></tr> <tr><td>\$B</td><td>154</td><td>30%</td></tr> <tr><td>\$C</td><td>246</td><td>40%</td></tr> <tr><td>\$EN</td><td>-24</td><td>70%</td></tr> </table> | \$M         | 46          | 85%        | \$W        | 63   | 35% | \$F  | 98  | 30% | \$G | 56    | 30% | \$B | 154 | 30% | \$C | 246 | 40% | \$EN | -24 | 70% |
| \$M  | 46          | 85%   |            |  |             |             |            |            |      |     |      |     |     |     |       |     |     |     |     |     |     |     |      |     |     |
| \$W  | 63          | 35%   |            |  |             |             |            |            |      |     |      |     |     |     |       |     |     |     |     |     |     |     |      |     |     |
| \$F  | 98          | 30%   |            |  |             |             |            |            |      |     |      |     |     |     |       |     |     |     |     |     |     |     |      |     |     |
| \$G  | 56          | 30%   |            |  |             |             |            |            |      |     |      |     |     |     |       |     |     |     |     |     |     |     |      |     |     |
| \$B  | 154         | 30%   |            |  |             |             |            |            |      |     |      |     |     |     |       |     |     |     |     |     |     |     |      |     |     |
| \$C  | 246         | 40%   |            |  |             |             |            |            |      |     |      |     |     |     |       |     |     |     |     |     |     |     |      |     |     |
| \$EN   | -24         | 70%   |            |  |             |             |            |            |      |     |      |     |     |     |       |     |     |     |     |     |     |     |      |     |     |
| <b>BARRETT Pride 357 1406 0966</b><br>Barretts Iron Mike 0966<br>Barretts Pride 1406 210 423 |             |   |            |  |             |             |            |            |      |     |      |     |     |     |       |     |     |     |     |     |     |     |      |     |     |
| <b>ANGUS</b>   | <b>CED</b>  | <b>BW</b>   | <b>WW</b>  | <b>YW</b>  | <b>RADG</b> | <b>DMI</b>  | <b>YH</b>  |            |      |     |      |     |     |     |       |     |     |     |     |     |     |     |      |     |     |
|  | 5           | 60%   | 3.1        | 90%  | 64          | 45%         | 111        | 50%        | 0.26 | 40% | 0.54 | 25% | 0.5 | 50% |       |     |     |     |     |     |     |     |      |     |     |
|  | <b>SC</b>   | <b>HP</b>   | <b>CEM</b> | <b>Milk</b>  | <b>MW</b>   | <b>MH</b>   | <b>DOC</b> |            |      |     |      |     |     |     |       |     |     |     |     |     |     |     |      |     |     |
|  | 2.25        | 1%  | 5.6        | 95%  | 6           | 70%         | 33         | 15%        | 65   | 45% | 0.2  | 60% | 15  | 65% |       |     |     |     |     |     |     |     |      |     |     |
|  | <b>CLAW</b> | <b>ANGLE</b>  | <b>PAP</b> | <b>HS</b>  | <b>CW</b>   | <b>MARB</b> | <b>RE</b>  | <b>FAT</b> |      |     |      |     |     |     |       |     |     |     |     |     |     |     |      |     |     |
|  | 0.46        | 35%   | 0.48       | 45%  | -0.12       | 20%         | 0.7        | 80%        | 50   | 40% | 0.93 | 15% | 0.2 | 95% | 0.063 | 95% |     |     |     |     |     |     |      |     |     |

6642 was bought by Shannon and Zan Ardery in 2017. His dam has a calving interval of 8 @ 366 and is out of the Iron Mike bull that we raised. Iron Mike was purchased by Cline Cattle Co. Daughters of Iron Mike continue to be one of the most solid set of females ever in our herd. Their fertility, excellent feet, udder quality, and fleshing ability continue to amaze us as his oldest daughters are coming on 10 years of age.

## 109

## Barrett 1222 659 6642



BD: 09/10/21 ID: 1222 REG #: 20502314

|  |             |   |            |   |             |             |            |            |     |     |      |     |     |     |      |     |     |     |     |     |     |     |      |     |     |
|--|-------------|---|------------|---|-------------|-------------|------------|------------|-----|-----|------|-----|-----|-----|------|-----|-----|-----|-----|-----|-----|-----|------|-----|-----|
| <b>BARRETT 6642 357 PW</b><br>Basin Payweight 1682<br>BARRETT Pride 357 1406 0966        |             | Basin Payweight 0065<br>21AR O Lass 7017<br>Barretts Iron Mike 0966<br>Barretts Pride 1406 210 423<br>SA V Resource 1441<br>Barretts Miss 4004 2526 BAR<br>N Bar Prime Time D806<br>Fink Donna 9402 9140 OT |            | <table border="1"> <tr><td>\$M</td><td>52</td><td>80%</td></tr> <tr><td>\$W</td><td>60</td><td>40%</td></tr> <tr><td>\$F</td><td>107</td><td>15%</td></tr> <tr><td>\$G</td><td>48</td><td>55%</td></tr> <tr><td>\$B</td><td>155</td><td>30%</td></tr> <tr><td>\$C</td><td>253</td><td>40%</td></tr> <tr><td>\$EN</td><td>-27</td><td>80%</td></tr> </table> | \$M         | 52          | 80%        | \$W        | 60  | 40% | \$F  | 107 | 15% | \$G | 48   | 55% | \$B | 155 | 30% | \$C | 253 | 40% | \$EN | -27 | 80% |
| \$M  | 52          | 80%   |            |   |             |             |            |            |     |     |      |     |     |     |      |     |     |     |     |     |     |     |      |     |     |
| \$W  | 60          | 40%   |            |   |             |             |            |            |     |     |      |     |     |     |      |     |     |     |     |     |     |     |      |     |     |
| \$F  | 107         | 15%   |            |   |             |             |            |            |     |     |      |     |     |     |      |     |     |     |     |     |     |     |      |     |     |
| \$G  | 48          | 55%   |            |   |             |             |            |            |     |     |      |     |     |     |      |     |     |     |     |     |     |     |      |     |     |
| \$B  | 155         | 30%   |            |   |             |             |            |            |     |     |      |     |     |     |      |     |     |     |     |     |     |     |      |     |     |
| \$C  | 253         | 40%   |            |   |             |             |            |            |     |     |      |     |     |     |      |     |     |     |     |     |     |     |      |     |     |
| \$EN   | -27         | 80%   |            |   |             |             |            |            |     |     |      |     |     |     |      |     |     |     |     |     |     |     |      |     |     |
| <b>RAR Fink Donna 659 1350 OD</b><br>BARRETT Overdrive 4856<br>Fink Donna 1350 9402 NBPT |             |   |            |   |             |             |            |            |     |     |      |     |     |     |      |     |     |     |     |     |     |     |      |     |     |
| <b>ANGUS</b>   | <b>CED</b>  | <b>BW</b>   | <b>WW</b>  | <b>YW</b>   | <b>RADG</b> | <b>DMI</b>  | <b>YH</b>  |            |     |     |      |     |     |     |      |     |     |     |     |     |     |     |      |     |     |
|  | 3           | 75%   | 3.1        | 90%   | 62          | 50%         | 117        | 35%        | .24 | 60% | 1.32 | 70% | .4  | 65% |      |     |     |     |     |     |     |     |      |     |     |
|  | <b>SC</b>   | <b>HP</b>   | <b>CEM</b> | <b>Milk</b>   | <b>MW</b>   | <b>MH</b>   | <b>DOC</b> |            |     |     |      |     |     |     |      |     |     |     |     |     |     |     |      |     |     |
|  | 1.9         | 4%  | 8.2        | 90%   | 4           | 85%         | 35         | 10%        | 68  | 45% | .2   | 70% | 19  | 50% |      |     |     |     |     |     |     |     |      |     |     |
|  | <b>CLAW</b> | <b>ANGLE</b>  | <b>PAP</b> | <b>HS</b>   | <b>CW</b>   | <b>MARB</b> | <b>RE</b>  | <b>FAT</b> |     |     |      |     |     |     |      |     |     |     |     |     |     |     |      |     |     |
|  | .37         | 10%   | .45        | 30%   | .43         | 30%         | .74        | 90%        | 60  | 25% | .70  | 40% | .42 | 80% | .073 | 95% |     |     |     |     |     |     |      |     |     |

|              |             |              |            |             |             |             |            |            |     |     |     |     |     |     |      |     |
|--------------|-------------|--------------|------------|-------------|-------------|-------------|------------|------------|-----|-----|-----|-----|-----|-----|------|-----|
| <b>ANGUS</b> | <b>CED</b>  | <b>BW</b>    | <b>WW</b>  | <b>YW</b>   | <b>RADG</b> | <b>DMI</b>  | <b>YH</b>  |            |     |     |     |     |     |     |      |     |
|              | -1          | 95%          | 4.8        | 95%         | 67          | 35%         | 126        | 25%        | .31 | 10% | .71 | 25% | .7  | 35% |      |     |
|              | <b>SC</b>   | <b>HP</b>    | <b>CEM</b> | <b>Milk</b> | <b>MW</b>   | <b>MH</b>   | <b>DOC</b> |            |     |     |     |     |     |     |      |     |
|              | 2.1         | 2%           | 8.2        | 90%         | -1          | 95%         | 45         | 1%         | 84  | 30% | .4  | 50% | 11  | 80% |      |     |
|              | <b>CLAW</b> | <b>ANGLE</b> | <b>PAP</b> | <b>HS</b>   | <b>CW</b>   | <b>MARB</b> | <b>RE</b>  | <b>FAT</b> |     |     |     |     |     |     |      |     |
|              | .41         | 20%          | .42        | 20%         | -.61        | 15%         | .75        | 90%        | 65  | 15% | .63 | 50% | .59 | 55% | .025 | 70% |

## 106

## Barrett 1205 1408 OD



BD: 09/05/21 ID: 1205 REG #: 20499608

|  |             |  |            |  |             |             |            |            |     |     |      |     |     |     |      |     |     |     |     |     |     |     |      |     |     |
|--|-------------|--|------------|--|-------------|-------------|------------|------------|-----|-----|------|-----|-----|-----|------|-----|-----|-----|-----|-----|-----|-----|------|-----|-----|
| <b>BARRETT Overdrive 4856</b><br>SA V Resource 1441<br>Barretts Miss 4004 2526 BAR               |             | Rito 707 of Ideal 3407 7075<br>SA V Blackcap May 4136<br>B A R Ext Traveler 205<br>Finks Miss 2526 9078 5175<br>N Bar Prime Time D806<br>Ideal 4465 of 6807 4286<br>Boyd On Target 1083<br>Barretts 809 of 1404 5522 |            | <table border="1"> <tr><td>\$M</td><td>52</td><td>80%</td></tr> <tr><td>\$W</td><td>51</td><td>70%</td></tr> <tr><td>\$F</td><td>84</td><td>50%</td></tr> <tr><td>\$G</td><td>46</td><td>60%</td></tr> <tr><td>\$B</td><td>130</td><td>65%</td></tr> <tr><td>\$C</td><td>221</td><td>75%</td></tr> <tr><td>\$EN</td><td>-31</td><td>85%</td></tr> </table> | \$M         | 52          | 80%        | \$W        | 51  | 70% | \$F  | 84  | 50% | \$G | 46   | 60% | \$B | 130 | 65% | \$C | 221 | 75% | \$EN | -31 | 85% |
| \$M  | 52          | 80%  |            |  |             |             |            |            |     |     |      |     |     |     |      |     |     |     |     |     |     |     |      |     |     |
| \$W  | 51          | 70%  |            |  |             |             |            |            |     |     |      |     |     |     |      |     |     |     |     |     |     |     |      |     |     |
| \$F  | 84          | 50%  |            |  |             |             |            |            |     |     |      |     |     |     |      |     |     |     |     |     |     |     |      |     |     |
| \$G  | 46          | 60%  |            |  |             |             |            |            |     |     |      |     |     |     |      |     |     |     |     |     |     |     |      |     |     |
| \$B  | 130         | 65%  |            |  |             |             |            |            |     |     |      |     |     |     |      |     |     |     |     |     |     |     |      |     |     |
| \$C  | 221         | 75%  |            |  |             |             |            |            |     |     |      |     |     |     |      |     |     |     |     |     |     |     |      |     |     |
| \$EN   | -31         | 85%  |            |  |             |             |            |            |     |     |      |     |     |     |      |     |     |     |     |     |     |     |      |     |     |
| <b>Barretts Rita 1408 2606 NPV</b><br>Sinclair Net Present Value<br>Barretts Rita 2606 of 809 OT |             |  |            |  |             |             |            |            |     |     |      |     |     |     |      |     |     |     |     |     |     |     |      |     |     |
| <b>ANGUS</b>   | <b>CED</b>  | <b>BW</b>  | <b>WW</b>  | <b>YW</b>  | <b>RADG</b> | <b>DMI</b>  | <b>YH</b>  |            |     |     |      |     |     |     |      |     |     |     |     |     |     |     |      |     |     |
|  | 3           | 75%  | 2.7        | 85%  | 63          | 45%         | 114        | 40%        | .24 | 60% | 1.17 | 60% | .5  | 55% |      |     |     |     |     |     |     |     |      |     |     |
|  | <b>SC</b>   | <b>HP</b>  | <b>CEM</b> | <b>Milk</b>  | <b>MW</b>   | <b>MH</b>   | <b>DOC</b> |            |     |     |      |     |     |     |      |     |     |     |     |     |     |     |      |     |     |
|  | .9          | 45%  | 9.9        | 75%  | 6           | 75%         | 24         | 70%        | 89  | 25% | .5   | 40% | 17  | 60% |      |     |     |     |     |     |     |     |      |     |     |
|  | <b>CLAW</b> | <b>ANGLE</b>   | <b>PAP</b> | <b>HS</b>  | <b>CW</b>   | <b>MARB</b> | <b>RE</b>  | <b>FAT</b> |     |     |      |     |     |     |      |     |     |     |     |     |     |     |      |     |     |
|  | .34         | 4%   | .30        | 1%   | 1.67        | 60%         | .67        | 80%        | 46  | 55% | .42  | 75% | .84 | 20% | .005 | 40% |     |     |     |     |     |     |      |     |     |



Barretts Rita 1408 2606 NPV — Dam of Lot 106  
Pictured this past fall after having her 12th calf.

## 108

## Barrett 1221A 663 6642



BD: 09/08/21 ID: 1221 REG #: 20502313

|  |             |  |            |   |             |             |            |            |      |     |      |     |     |     |       |     |     |     |     |     |     |     |      |     |     |
|--|-------------|--|------------|---|-------------|-------------|------------|------------|------|-----|------|-----|-----|-----|-------|-----|-----|-----|-----|-----|-----|-----|------|-----|-----|
| <b>BARRETT 6642 357 PW</b><br>Basin Payweight 1682<br>BARRETT Pride 357 1406 0966    |             | Basin Payweight 0065<br>21AR O Lass 7017<br>Barretts Iron Mike 0966<br>Barretts Pride 1406 210 423<br>SA V Resource 1441<br>Barretts Miss 4004 2526 BAR<br>K C F Bennett Absolute<br>Fink Donna 1310 6561 BI |            | <table border="1"> <tr><td>\$M</td><td>41</td><td>95%</td></tr> <tr><td>\$W</td><td>64</td><td>30%</td></tr> <tr><td>\$F</td><td>114</td><td>10%</td></tr> <tr><td>\$G</td><td>51</td><td>45%</td></tr> <tr><td>\$B</td><td>164</td><td>20%</td></tr> <tr><td>\$C</td><td>254</td><td>40%</td></tr> <tr><td>\$EN</td><td>-40</td><td>95%</td></tr> </table> | \$M         | 41          | 95%        | \$W        | 64   | 30% | \$F  | 114 | 10% | \$G | 51    | 45% | \$B | 164 | 20% | \$C | 254 | 40% | \$EN | -40 | 95% |
| \$M  | 41          | 95%  |            |   |             |             |            |            |      |     |      |     |     |     |       |     |     |     |     |     |     |     |      |     |     |
| \$W  | 64          | 30%  |            |   |             |             |            |            |      |     |      |     |     |     |       |     |     |     |     |     |     |     |      |     |     |
| \$F  | 114         | 10%  |            |   |             |             |            |            |      |     |      |     |     |     |       |     |     |     |     |     |     |     |      |     |     |
| \$G  | 51          | 45%  |            |   |             |             |            |            |      |     |      |     |     |     |       |     |     |     |     |     |     |     |      |     |     |
| \$B  | 164         | 20%  |            |   |             |             |            |            |      |     |      |     |     |     |       |     |     |     |     |     |     |     |      |     |     |
| \$C  | 254         | 40%  |            |   |             |             |            |            |      |     |      |     |     |     |       |     |     |     |     |     |     |     |      |     |     |
| \$EN   | -40         | 95%  |            |   |             |             |            |            |      |     |      |     |     |     |       |     |     |     |     |     |     |     |      |     |     |
| <b>RAR Fink Donna 663 31 OD</b><br>BARRETT Overdrive 4856<br>ARDERY Donna 31 1310 AB |             |  |            |   |             |             |            |            |      |     |      |     |     |     |       |     |     |     |     |     |     |     |      |     |     |
| <b>ANGUS</b>   | <b>CED</b>  | <b>BW</b>  | <b>WW</b>  | <b>YW</b>   | <b>RADG</b> | <b>DMI</b>  | <b>YH</b>  |            |      |     |      |     |     |     |       |     |     |     |     |     |     |     |      |     |     |
|  | 5           | 60%  | 3.1        | 90%   | 64          | 45%         | 111        | 50%        | 0.26 | 40% | 0.54 | 25% | 0.5 | 50% |       |     |     |     |     |     |     |     |      |     |     |
|  | <b>SC</b>   | <b>HP</b>  | <b>CEM</b> | <b>Milk</b>   | <b>MW</b>   | <b>MH</b>   | <b>DOC</b> |            |      |     |      |     |     |     |       |     |     |     |     |     |     |     |      |     |     |
|  | 2.25        | 1%   | 5.6        | 95%   | 6           | 70%         | 33         | 15%        | 65   | 45% | 0.2  | 60% | 15  | 65% |       |     |     |     |     |     |     |     |      |     |     |
|  | <b>CLAW</b> | <b>ANGLE</b>   | <b>PAP</b> | <b>HS</b>   | <b>CW</b>   | <b>MARB</b> | <b>RE</b>  | <b>FAT</b> |      |     |      |     |     |     |       |     |     |     |     |     |     |     |      |     |     |
|  | 0.46        | 35%  | 0.48       | 45%   | -0.12       | 20%         | 0.7        | 80%        | 50   | 40% | 0.93 | 15% | 0.2 | 95% | 0.063 | 95% |     |     |     |     |     |     |      |     |     |

|              |             |              |            |             |             |             |            |            |     |     |     |     |     |     |      |     |
|--------------|-------------|--------------|------------|-------------|-------------|-------------|------------|------------|-----|-----|-----|-----|-----|-----|------|-----|
| <b>ANGUS</b> | <b>CED</b>  | <b>BW</b>    | <b>WW</b>  | <b>YW</b>   | <b>RADG</b> | <b>DMI</b>  | <b>YH</b>  |            |     |     |     |     |     |     |      |     |
|              | -1          | 95%          | 4.8        | 95%         | 67          | 35%         | 126        | 25%        | .31 | 10% | .71 | 25% | .7  | 35% |      |     |
|              | <b>SC</b>   | <b>HP</b>    | <b>CEM</b> | <b>Milk</b> | <b>MW</b>   | <b>MH</b>   | <b>DOC</b> |            |     |     |     |     |     |     |      |     |
|              | 2.1         | 2%           | 8.2        | 90%         | -1          | 95%         | 45         | 1%         | 84  | 30% | .4  | 50% | 11  | 80% |      |     |
|              | <b>CLAW</b> | <b>ANGLE</b> | <b>PAP</b> | <b>HS</b>   | <b>CW</b>   | <b>MARB</b> | <b>RE</b>  | <b>FAT</b> |     |     |     |     |     |     |      |     |
|              | .41         | 20%          | .42        | 20%         | -.61        | 15%         | .75        | 90%        | 65  | 15% | .63 | 50% | .59 | 55% | .025 | 70% |



BCB

Thank you for attending!

We look forward to seeing you next year on

\_\_\_\_\_ Friday, March 22, 2024 \_\_\_\_\_

Barrett Cattle and Mill Brae Ranch Bull Sale  
2563 Douglas Rd.  
Grantville, KS 66429  
ADDRESS SERVICE REQUESTED



Mill Brae Benchmark 2025 — Lot 4



Barrett 1130 520 P1 — Lot 39



Mill Brae Guarantee K004 — Lot 20



Barrett 1167 662 4404 — Lot 73